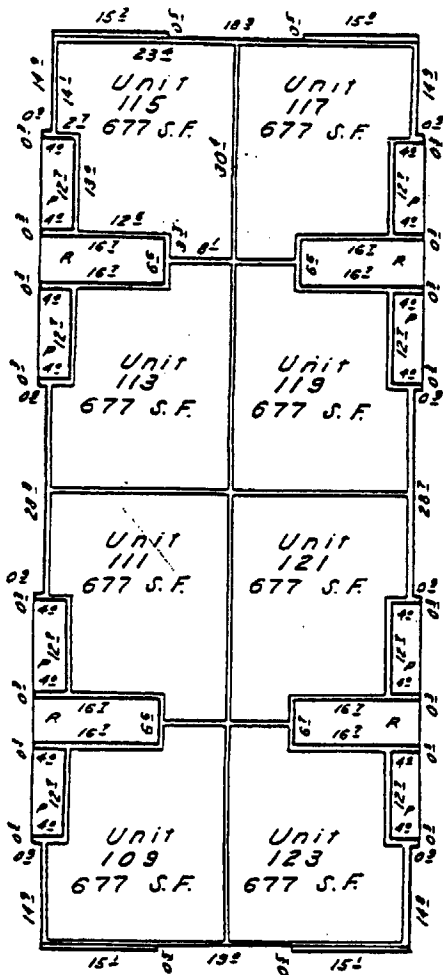
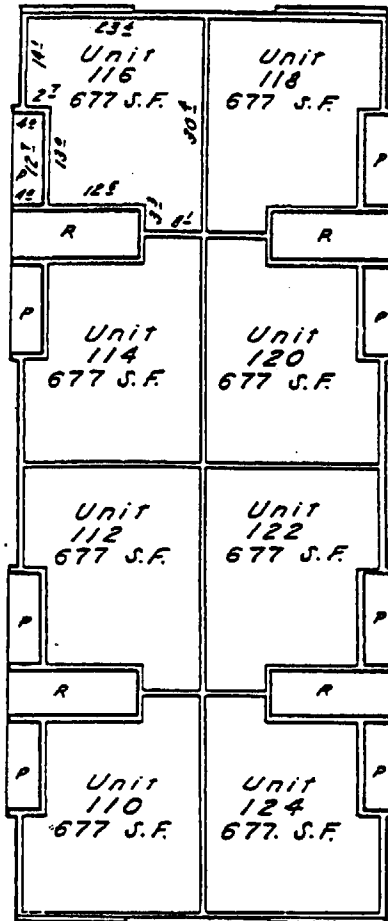


Building H



First Floor

FE = 291.9
CE = 299.9



Second Floor

FE = 301.0
CE = 309.0

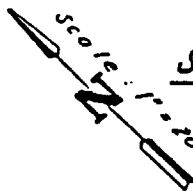
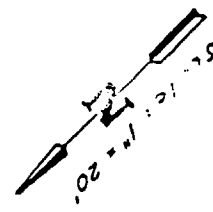


EXHIBIT "B"

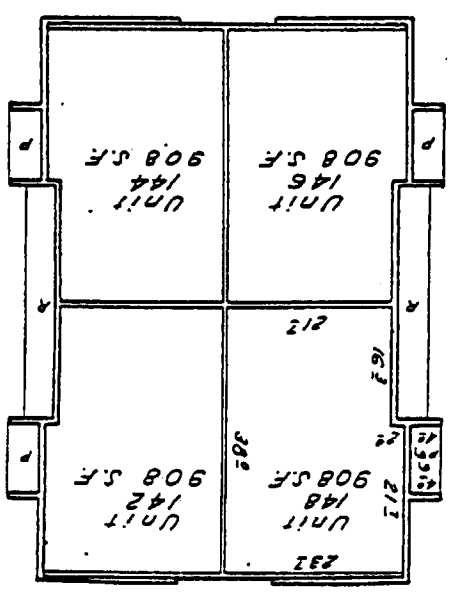
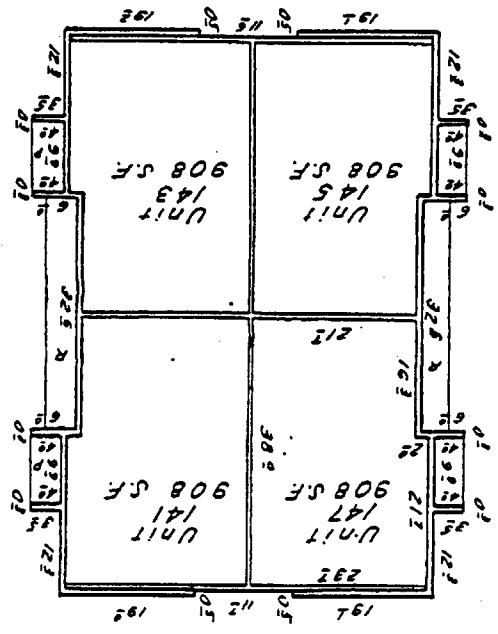
<p><i>Building H</i></p>	<p><i>Cripple Creek Condominiums</i></p>	<p><i>Sheet 17 of 23</i></p>
------------------------------	--	----------------------------------

EXHIBIT "B"

First Floor
 FE = 289.2
 CE = 207.4



Second Floor
 FE = 289.4
 CE = 306.4

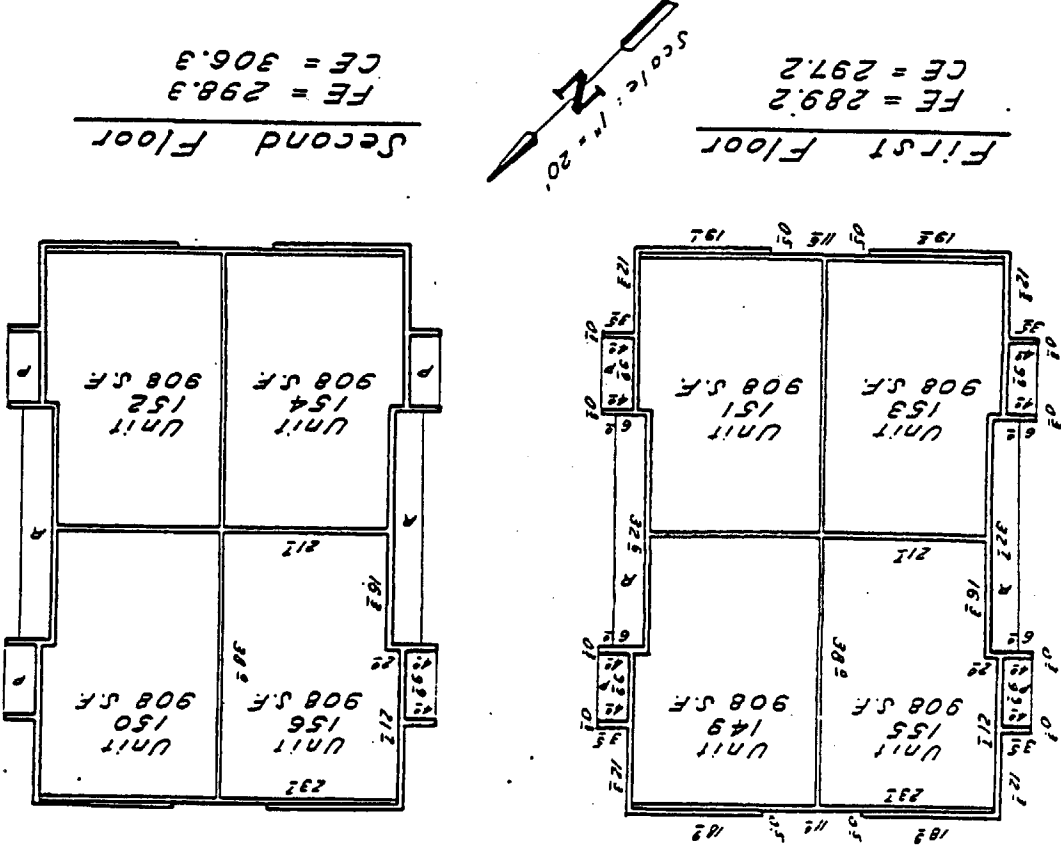


Building J

NOTES: Dimensions of each part of the building are exterior dimensions. Dimensions of each unit are interior dimensions, horizontally and vertically. The perimeter lines of all units form right angles at points of intersection. The planes of the walls are perpendicular to the planes of the floors of the units. The planes of the walls are perpendicular to the planes of the ceilings of the units.

NOTE: Odd numbered units are ground floor units except in the case of the studio units which vary.

- Legend
- FE Floor Elevation
 - CE Ceiling Elevation
 - PS Parking Space
 - P Patio
 - SF Square Footage including
 - Patio Area
 - R Restricted Common Area
 - Air Conditioner Pod
 - ◇ Fire Hydrant
 - ⊠ Transformer Pod
 - ▲ Water Valve
 - Power Pole
 - Light Pole
- Square footages of condominiums are interior square footages. Number of Condominiums - 156. Total number of Square Feet of Condominiums - 120,808 Sq. Ft.
- Benchmark: Headwall @ S.E. Corner of Dominick & Stallings Drive. E.L. = 287.91' U.S.C&G.S. (Datum) - Established by Others



Unit 149
Unit 150
Unit 151
Unit 152
Unit 153
Unit 154
Unit 155
Unit 156

Building K

Unit 141
Unit 142
Unit 143
Unit 144
Unit 145
Unit 146
Unit 147
Unit 148

Building J

Unit 125
Unit 126
Unit 127
Unit 128
Unit 129
Unit 130
Unit 131
Unit 132
Unit 133
Unit 134
Unit 135
Unit 136
Unit 137
Unit 138
Unit 139
Unit 140

Building I

Unit 109
Unit 110
Unit 111
Unit 112
Unit 113
Unit 114
Unit 115
Unit 115
Unit 117
Unit 118
Unit 119
Unit 120
Unit 121
Unit 122
Unit 123
Unit 124

Building H

Unit 101
Unit 102
Unit 103
Unit 104
Unit 105
Unit 106
Unit 107
Unit 108

Building G

BUILDING AND UNIT NUMBER

.7516
.7516
.7516
.7516
.7516
.7516
.7516
.7516

.7516
.7516
.7516
.7516
.7516
.7516
.7516
.7516

.7516
.7516
.7516
.7516
.7516
.7516
.7516
.7516
.7516
.7516
.7516
.7516
.7516
.7516
.7516
.7516
.7516
.7516
.7516
.7516

.5604
.5604
.5604
.5604
.5604
.5604
.5604
.5604
.5604
.5604
.5604
.5604
.5604
.5604
.5604
.5604
.5604
.5604
.5604
.5604
.5604

.7516
.7516
.7516
.7516
.7516
.7516
.7516
.7516

PERCENTAGE OF UNDIVIDED INTEREST IN COMMON ELEMENTS

FILED

1938 MAY -9 PM 1:58

Public State of Texas
COUNTY CLERK
LAWYERS BUILDING
DAVENS HOUSE

[Handwritten signature]

000000

Brazos County, Texas

CRIPPLE CREEK CONDOMINIUMS

FOR

CONDOMINIUM DECLARATION

18
18
18
17
17
17
17
16
16
16
16
16
16
15
9
9
8
8
8
8
8
7
7
2
1

INTRODUCTORY

ARTICLE I - DEFINITIONS AND TERMS

Paragraph 1.1 - DEFINITIONS AND TERMS

ARTICLE II - CONDOMINIUM UNIT DESIGNATIONS AND DESCRIPTIONS

Paragraph 2.1 - RECORDATION OF PLAN

Paragraph 2.2 - DESIGNATION OF UNITS

Paragraph 2.3 - LIMITED COMMON ELEMENTS

Paragraph 2.4 - REGULATION OF COMMON AREAS

Paragraph 2.5 - INSEPARABLE UNITS

Paragraph 2.6 - DESCRIPTIONS

Paragraph 2.7 - ENCROACHMENTS

Paragraph 2.8 - GOVERNMENTAL ASSESSMENT

Paragraph 2.9 - USE AND OCCUPANCY RESTRICTIONS

Paragraph 2.10 - RESERVATION OF VARIANCE

ARTICLE III - RIGHTS AND OBLIGATIONS OF OWNERSHIP

Paragraph 3.1 - OWNERSHIP

Paragraph 3.2 - PARTITION

Paragraph 3.3 - EXCLUSIVENESS OF OWNERSHIP

Paragraph 3.4 - ONE-FAMILY RESIDENTIAL DWELLING

Paragraph 3.5 - MECHANIC'S AND MATERIALMAN'S LIENS

Paragraph 3.6 - RIGHT OF ENTRY

Paragraph 3.7 - OWNER MAINTENANCE

Paragraph 3.8 - ALTERATION

Paragraph 3.9 - RESTRICTION OF OWNERSHIP

Paragraph 3.10 - LIABILITY FOR NEGLIGENCE ACTS

Paragraph 3.11 - SUBJECT TO DECLARATION AND BY-LAWS

ARTICLE IV - MANAGEMENT AND ADMINISTRATION

Paragraph 4.1 - BY-LAWS

Paragraph 4.2 - DECLARANT CONTROL

TABLE OF CONTENTS
FOR THE DECLARATION OF
CRIPPLE CREEK CONDOMINIUMS

ARTICLE IV - CONTINUED

19 Paragraph 4.3 - TEMPORARY MANAGING AGENT

19 Paragraph 4.4 - SPECIFIC POWER TO RESTRICT USE AND ENJOYMENT

20 Paragraph 4.5 - MEMBERSHIP, VOTING, QUORUM, PROXIES

21 Paragraph 4.6 - INSURANCE

ARTICLE V - MAINTENANCE ASSESSMENTS

23 Paragraph 5.1 - ASSESSMENTS FOR COMMON EXPENSES

24 Paragraph 5.2 - PURPOSE OF ASSESSMENTS

24 Paragraph 5.3 - DETERMINATION OF ASSESSMENTS

25 Paragraph 5.4 - INITIAL ASSESSMENT AND MAXIMUM MONTHLY ASSESSMENT

26 Paragraph 5.5 - SPECIAL ASSESSMENTS FOR IMPROVEMENTS

26 Paragraph 5.6 - COMMENCEMENT OF ASSESSMENTS

26 Paragraph 5.7 - NO EXEMPTION

26 Paragraph 5.8 - LIEN FOR ASSESSMENTS

28 Paragraph 5.9 - SUBORDINATION OF THE LIEN TO MORTGAGES

28 Paragraph 5.10 - STATEMENT OF ASSESSMENTS

28 Paragraph 5.11 - OBLIGATION OF DECLARANT FOR ASSESSMENTS AND MAINTENANCE

ARTICLE VI - DESTRUCTION OR OBSOLESCENCE OF IMPROVEMENTS

30 Paragraph 6.1 - DESTRUCTION OR OBSOLESCENCE

34 Paragraph 6.2 - JUDICIAL PARTITION

35 Paragraph 6.3 - CONDEMNATION

ARTICLE VII - PROTECTION OF MORTGAGEE

38 Paragraph 7.1 - NOTICE TO ASSOCIATION

39 Paragraph 7.2 - NOTICE OF DEFAULT; LAPSE IN INSURANCE

39 Paragraph 7.3 - EXAMINATION OF BOOKS

39 Paragraph 7.4 - RESERVE FUND

39 Paragraph 7.5 - ANNUAL FINANCIAL STATEMENTS

39 Paragraph 7.6 - NOTICE OF MEETINGS

39 Paragraph 7.7 - NOTICE OF DAMAGE OR DESTRUCTION

39 Paragraph 7.8 - MANAGEMENT AGREEMENTS

40 Paragraph 7.9 - TAXES, ASSESSMENTS AND CHARGES