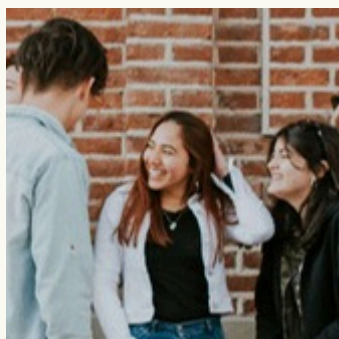
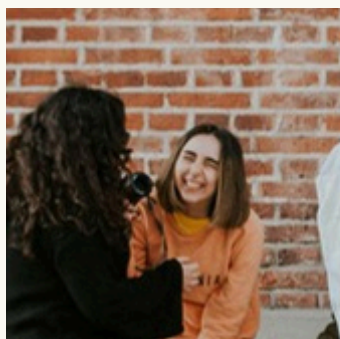


2025 ANNUAL REPORT

**MOVE
FORWARD**

breaking barriers, building futures

YOUR story
ISN'T OVER YET.



Together
WE RISE.



DEAR FRIENDS OF MOVE FORWARD,

As I reflect on FY2025, I am filled with deep gratitude and a profound sense of responsibility. This year brought continued uncertainty across the systems youth and families rely on, from shifting funding landscapes to rising mental health needs and increasing housing instability. At times, the path forward felt less predictable than ever. Yet throughout it all, our mission remained clear: ensuring that every young person in our community has access to the support and stability they need to thrive. **In the midst of this complexity, Move Forward remained steady.**

HOLDING STEADY FOR YOUTH & FAMILIES

Across the West Metro, our team showed up each day in schools, community spaces, and housing settings providing therapy, outreach, case management, and homelessness prevention services to youth and families navigating difficult transitions. We saw growing demand from young people facing housing instability, trauma, and barriers to traditional mental health care. Youth describe Move Forward as nurturing and supportive, a place where they can overcome challenges and build independence. These reflections speak to the transformative power of consistent relationships and community care. In response, we strengthened our commitment to meeting youth where they are, ensuring support remained accessible and grounded in trust.

STRENGTHENING PREVENTION AND STABILITY

This year reinforced what we have long known: prevention works. Through Schools to Housing and our Transitional Living Program, youth and families remained stably housed, stayed connected to school and employment, and built pathways toward independence. These outcomes reflect intentional investment, flexible support, and strong community partnerships at a time when safety nets remain fragile.

GROWING THROUGH PARTNERSHIP AND INNOVATION

Even amid uncertainty, new opportunities emerged. We expanded culturally responsive mental health and care coordination services through additional school partnerships, continuing to step forward as a trusted community partner focused on increasing youth engagement, attendance, and preparation for college and career. Our rebrand, new website, and refreshed Drop-In Center shaped by youth voice to foster warmth, safety, and belonging created more welcoming pathways to care. As a result, more youth and families reached out directly for support.

LOOKING AHEAD WITH PURPOSE

While challenges remain, this year reaffirmed the power of community investment. Together with school partners, community organizations, donors, and volunteers, we are strengthening the safety net so young people can move forward with confidence and hope.

To all who stand with us in this work – thank you. Your commitment makes it possible for youth and families to navigate uncertainty and build brighter futures.



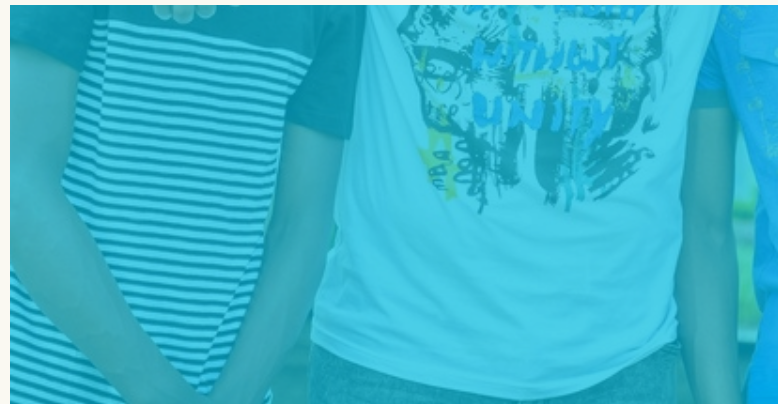
**WITH
GRATITUDE
AND HOPE,**

*Angela
Gauthier*

WHO WE ARE:

Move Forward is a nonprofit organization in Minnesota offering free, trauma-informed services for at-risk youth ages 11–24 and their families in the West Metro. Since 1990, we've supported over 7,000 young people through youth outreach services, case management, mental health care, crisis intervention, and transitional housing programs. Whether you're facing homelessness, family conflict, or mental health struggles, we meet you where you are—with no judgment and no barriers.

As the only organization in the West Metro combining free therapy, youth homeless prevention, and case management, we walk alongside youth and families as they move toward safety, stability, and hope.



WHO WE SERVE:

- Move Forward services are focused in Hennepin County's western suburbs.
- Primarily Hopkins, Eden Prairie, and St. Louis Park school districts.
- Provide services to the following:
 - Youth ages 11- 24 years old who are at risk of or experiencing homelessness and/or are under or uninsured.
 - Families with school age children who are experiencing housing instability.
 - 84% of youth we serve identify as BIPOC
 - 15% identify as LGBTQIA+

OUR STORY:

Formerly known as Teens Alone, Move Forward was founded by school social workers who saw a growing need for crisis intervention and youth housing in Minnesota's western suburbs. Our roots are in school-based youth outreach services, but our work has grown to include crisis stabilization, drop-in center support, and housing programs for young adults.

We've helped over 7000 youth find stability in the face of family conflict, school challenges, homelessness, and mental health struggles.



OUR MISSION:

Move Forward breaks down systemic barriers to housing and mental health care, building safety and stability for youth and families in the West Metro community.

OUR CORE VALUES:

*Our core values are based on the 9 Evidence-Based, Guiding Principles to Help Youth Overcome Homelessness.

JOURNEY-ORIENTED

Your past is part of your story, but it doesn't define your future—we're here to help you move forward.

TRAUMA INFORMED

We understand how trauma shapes lives, so we create safe, supportive spaces for healing and growth.



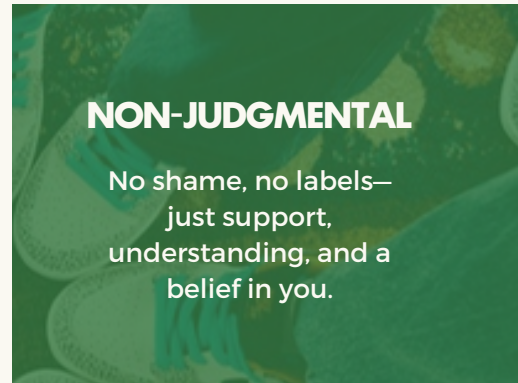
HARM REDUCTION

We focus on safety first, meeting youth where they are while working toward long-term solutions.



NON-JUDGMENTAL

No shame, no labels—just support, understanding, and a belief in you.



TRUSTING YOUTH-ADULT RELATIONSHIPS

We show up, stay consistent, and build trust—because real support starts with real relationships.

POSITIVE YOUTH DEVELOPMENT

Every young person deserves to feel valued, capable, and in control of their own future.



STRENGTHS-BASED

You have strengths, skills, and resilience—we see them, celebrate them, and help you build on them.

HOLISTIC

We support the whole person—mind, body, and spirit—because everything is connected.

COLLABORATION

We bring together youth, families, and communities to create lasting change, together.

YOUTH MENTAL HEALTH SERVICES



At Move Forward, we provide no-cost, low-barrier mental health services for young people navigating life's hardest moments. Whether it's depression, anxiety, grief, family conflict, or trauma, our licensed and master's level therapists meet youth where they are—literally and emotionally. We work with youth in middle and high schools (grades 6–12), as well as young adults ages 18–24 who are experiencing homelessness or living with disabilities.

In addition, when schools face a crisis—like the loss of a student, a violent incident, or a major threat—our team responds quickly with emotional support, crisis counseling, and trauma debriefing for both students and staff.

The impact:



IN 2025, 153 YOUTH

received individual and group therapy.



1265

mental health services provided to reduce psychosocial difficulties.



100%

of youth in therapy showed progress on mental health treatment goals



82%

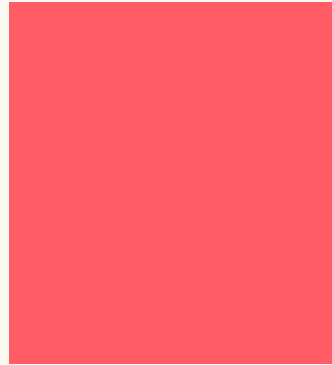
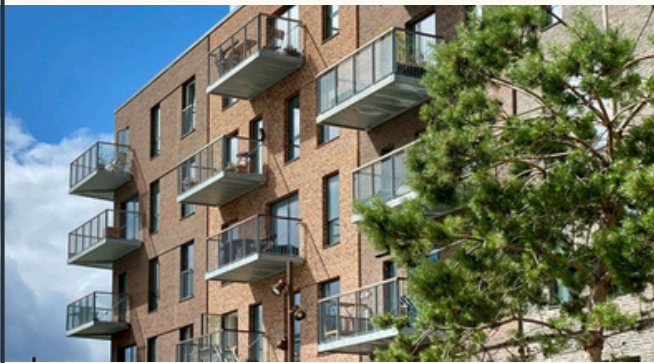
indicated improvement in working toward a peaceful solution when there is conflict

WHAT WE ACCOMPLISHED:

In FY2025, MoveFwd expanded access to youth mental health support through therapy, group programming, and community outreach. Our team responded to urgent needs in local schools, deepened partnerships such as the Hennepin Plus program at Ubah Academy, and launched Camp Move Forward, a free summer mental health program for middle school students. Through these efforts, youth reported meaningful growth in decision-making, conflict resolution, relationships with caring adults, and progress toward their mental health goals.



TRANSITIONAL LIVING PROGRAM



Our Transitional Living Program (TLP) provides youth transitional housing and wraparound support for 18–24-year-olds at imminent risk of or experiencing homelessness. With 16 scattered-site apartments, TLP serves 20 young people— some of whom are young single parents—helping them move from crisis to long-term stability. Participants choose their own affordable apartment, sign a lease, and receive a partial rent subsidy for up to three years, all while building independent living skills and financial resilience.



The impact:



**IN 2025,
20 YOUTH**

received stable housing & case management



80%

increased their income from employment



95%

remained out of shelter at 6 months later.



90%

improved independent living skills.



4 OUT OF 20

were parenting youth

WHAT WE ACCOMPLISHED:

In FY2025, MoveFwd's Transitional Living Program helped young people—including youth parents—achieve stable housing through rent support, case management, and skill-building groups. Participants strengthened employment readiness, financial literacy, and independent living skills while building community through shared learning opportunities. As a result, youth maintained stable housing, increased income, and remained connected to supportive services.



YOUTH OUTREACH, CASE MANAGEMENT AND DROP-IN SERVICES:



In FY2025, MoveFwd expanded youth outreach, case management, and drop-in services to ensure young people experiencing housing instability could access immediate support and trusted connections. Youth accessed services at our Hopkins Drop-In Center, in partnering schools, and at community sites such as MyHealth Clinic and Wildflyer Coffee. Through outreach and direct services, MoveFwd provided basic needs support, transportation assistance, and housing navigation while reconnecting with local schools to ensure youth and staff know how to access help when it's needed.

The impact:

IN 2025, 643 YOUTH
were served through
Case Management &
Outreach Services

235
Drop-In Center Visits

1,492
Basic Needs Supplies
Distributed

102
Bus Passes for Transportation

Youth accessed services at our Hopkins Drop-In Center, partner schools, and community sites including MyHealth Clinic and Wildflyer Coffee.

SCHOOLS TO HOUSING PROGRAM



In FY2025, MoveFwd's Schools to Housing program supported families with children in the Eden Prairie and Hopkins school districts who were at risk of homelessness. Through collaboration with school staff and Hennepin County, case management and financial assistance helped stabilize families, prevent shelter entry, and ensure children could remain in their schools of origin. In its first full year, the program kept families safely housed while helping parents strengthen financial stability and access supportive resources.



30 FAMILIES
received case
management
services to maintain
stable housing.

89%
children stayed in
the school of origin

80%
of families reported
stable housing at
program exit.

FY2025 FINANCIALS

STATEMENT OF FUNCTIONAL EXPENSES:	FY2025					FY2024
	Program Services	Supporting Services			Total All Services:	Total All Services:
		Management & General	Fundraising	Total Support Services		
SALARIED & RELATED EXPENSES						
Staff Salaries	\$808,055	\$100,828	\$20,610	\$121,438	\$929,493	\$706,806
Employee benefits	\$80,472	\$10,041	\$2,052	\$12,093	\$92,565	\$63,630
Payroll taxes	\$61,789	\$7,710	\$1,576	\$9,286	\$71,075	\$52,709
TOTAL SALARIES & RELATED EXPENSES	\$950,316	\$118,579	\$24,238	\$142,817	\$1,093,133	\$823,145
EXPENSES						
Contracted services	\$159,888	\$7,373	\$19,502	\$26,875	\$186,763	\$161,696
Donated facilities & Supplies	\$35,736	\$4,459	\$912	\$5,371	\$41,107	\$37,752
Insurance	\$10,185	\$1,271	\$260	\$1,531	\$11,716	\$13,405
Dues & subscriptions	\$11,453	\$1,429	\$292	\$1,721	\$13,174	\$31,973
Program Supplies	\$49,974	-	-	-	\$49,974	\$5,445
Professional Development	\$13,811	-	-	-	\$13,811	\$4,773
Professional services	\$82,335	\$10,274	\$26,742	\$37,016	\$119,351	\$101,409
Rental assistance	\$198,234	-	-	-	\$198,234	\$161,696
Telephone & internet	\$9,691	\$1,209	\$247	\$1,456	\$11,147	\$9,306
Travel	\$11,703	\$1,460	\$298	\$1,758	\$13,461	\$6,640
Office Expenses	\$12,149	\$23,070	\$736	\$23,806	\$35,955	\$33,769
Miscellaneous	\$174	\$22	\$5	\$27	\$201	-
TOTAL EXPENSES	\$1,385,761	\$161,773	\$53,730	\$215,503	\$1,601,264	\$1,229,313
PERCENTAGE OF BUDGET	86.54%	10.10%	3.36%	13.46%		

FY2025 FINANCIALS

STATEMENT OF ACTIVITIES	FY25		
	Without Donor Restrictions	With Donor Restrictions	Total
SUPPORT & REVENUE			
Contributions	\$ 168,426	\$ 76,740	\$ 245,166
Government grants & contracts	\$ 1,280,083	\$ 1,800	\$ 1,281,883
Contributions of nonfinancial assets	\$ 5,211	\$ 127,370	\$ 132,581
Program Income	\$ 16,315	-	\$ 16,315
TOTAL SUPPORT	\$ 1,470,035	\$ 205,910	\$ 1,675,945
OTHER REVENUE			
Investment Income	\$ 1,391	\$ -	\$ 1,391
NET ASSETS RELEASED FROM RESTRICTIONS	\$ 209,100	\$ (209,100)	\$ -
TOTAL SUPPORT & REVENUE	\$ 1,680,526	\$ (3,190)	\$ 1,677,336
EXPENSES			
Program Services	\$ 1,385,761	\$ -	\$ 1,385,761
Management & General (support services)	\$ 161,773	\$ -	\$ 161,773
Fundraising - (support services)	\$ 53,730	\$ -	\$ 53,730
Total Support Services	\$ 215,503	-	\$ 215,503
TOTAL EXPENSES	\$ 1,601,264	\$ -	\$ 1,601,264
Change in Net Assets	\$ 79,262	\$ (3,190)	\$ 76,072
Net Assets, July 1 (as Restated)	\$ 66,712	\$ 375,421	\$ 442,133
Net Assets, June 30	\$ 145,974	\$ 372,231	\$ 518,205

FY2025 FINANCIALS

STATEMENT OF FINANCIAL POSITION	FY25	FY24
CURRENT ASSETS		
Cash and cash equivalents	\$233,836	\$213,390
Accounts receivable	\$278,126	\$280,512
Prepaid expenses	\$12,327	\$9,511
TOTAL CURRENT ASSETS	\$524,289	\$503,413
NONCURRENT ASSETS		
Investments		
Rent free use of facility, net of present value discount	\$127,370	\$36,981
TOTAL NONCURRENT ASSETS		
TOTAL ASSETS	\$651,659	\$540,394
LIABILITIES AND NET ASSETS		
CURRENT LIABILITIES		
Accounts payable	\$44,201	\$45,311
Accrued expenses	\$74,593	\$9,950
Accrued retirement	\$14,660	
Line of Credit	-	\$43,000
TOTAL CURRENT LIABILITIES	\$133,454	\$98,261
NET ASSETS		
TOTAL NET ASSETS WITHOUT DONOR RESTRICTICION	\$145,974	\$66,712
Net assets with donor restrictions	\$372,231	\$375,421
TOTAL NET ASSETS	\$518,205	\$442,133
TOTAL LIABILITIES & NET ASSETS	\$651,659	\$540,394

BOARD OF DIRECTORS

JESSICA BRAMA

Development & Communications
Governance & Nominating

JOEL FEDER

Board Chair | Effective May 2024
Governance & Nominating Chair

JACOB DE VERA

Finance Committee

KALIN LEBRUN

Development & Communication

LINNAE SATHRE

Finance Committee

ANNIE PAUL

Governance & Nominating

ANNE RONDONI- TAVERNIER

Development & Communication
Co-Chair

LYNDSEY MARCELINO SCHALKWYK

Governance & Nominating

GEOFF TURGEON

Treasurer & Finance Committee
Chair, Development &
Communication

KEESHA WALZER

Development & Communication

MATT WALZER

Development & Communication



THANK YOU!

We are deeply grateful to our dedicated Board of Directors for their leadership, time, and unwavering commitment to Move Forward's mission. Their thoughtful guidance, advocacy, and generosity help ensure that youth and families in our community have access to the support and opportunities they need to thrive. We are proud to partner with board members who bring passion, expertise, and a shared belief in building brighter futures.

FY2025 CORPORATE/FOUNDATION DONATIONS

\$25,000+

James R. Thopre Foundation

\$5,000-24,999

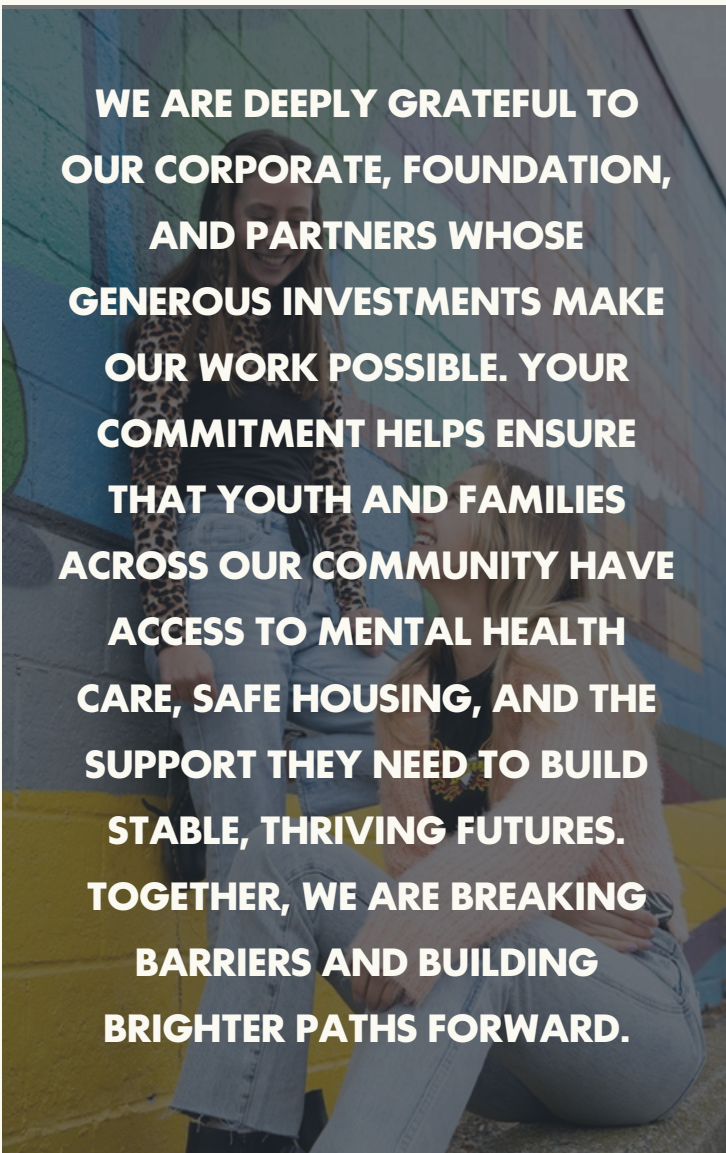
Allina Health
CH Robinson
Eden Prairie Family Services Collaborative
Edina Rotary
League of Catholic Women Foundation
Minneapolis Area Realtor Foundation
Pax Christi Catholic Community
Walser Foundation

\$1,000-\$4,999

Carlson Family Foundation
Eden Prairie Community Foundation
Minnetonka Rotary Club
Park Public Schools & Community Fund
Paypal Giving Fund
RBC Foundation
SLP Family Services Collaborative
St. Andrew's Benevolence Fund

\$100 - \$999

Hopkins Women's Club
The Women's Club of St. Louis Park



WE ARE DEEPLY GRATEFUL TO OUR CORPORATE, FOUNDATION, AND PARTNERS WHOSE GENEROUS INVESTMENTS MAKE OUR WORK POSSIBLE. YOUR COMMITMENT HELPS ENSURE THAT YOUTH AND FAMILIES ACROSS OUR COMMUNITY HAVE ACCESS TO MENTAL HEALTH CARE, SAFE HOUSING, AND THE SUPPORT THEY NEED TO BUILD STABLE, THRIVING FUTURES. TOGETHER, WE ARE BREAKING BARRIERS AND BUILDING BRIGHTER PATHS FORWARD.



OUR SUCCESS IS BECAUSE OF YOU.

FY2025 INDIVIDUAL DONATIONS

\$5,000-24,999

Beverly Deikel
Katie Trafton

\$1,000-\$4,999

Randy Betcher
Kathleen Bollinger
Mary Delaney
Dan & Hillary Feder
Joel & Laren Feder
Ron & Gigi Fingerhut
Heather Frary Carlson
Billee Kraut & Butch Johnson
Amy Miller
Clifford Otten
Jeff & Holly Parker
Paul Penningroth
Bobbi & Todd Pointer
Tim & Diane Thorpe
Nathan & Sarah Towne
Matt & Kim Walzer
Patrice Wardlow

\$100 - \$999

Linda & Ramon Bailer
Tracie & Becky Bell
Sharon & Carl Borine
Kathy & Bruce Bowman
Ann & Mike Brilley
Laura Capaldini
Sarah & Rick Chamberlain

\$100 - \$999

Keri & Nick Clifton
Ken & Maggie Corens
Adam Demers
Richard & Lois Demers
Tabatha Erck
Cecy Faster
Mary Guerrero
Barbara & David Halsey
Jean & Jim Hartman
Barbara Janssen
Robin Johnson
Marti & Jim Justus
Lydia Kihm
James Koch
Carol Kohler
WB & Marilyn Larson
Mary & Mark Loberg
Gay Ludvig
Sharon & Doug MacDonald
Julie Mall
Kari & Robert McSherry
Patty & Tom O'Reilly
Lance & Maren Osterkamp
Thomas & Naomi Peterson
David & Sharon Reier
Martha Roberts
Lisa Schmidt
Cheryl Schmidt
Jennifer Silverberg
Reidar Soderholm
Jessica Sybrant
Diane Waldow
Susan Walinske
Melissa White

OUR SUCCESS IS BECAUSE OF YOU.