

inControl
water systems

SUBMARINE TURBINE

S E R I E S

Submersible Pump System

U.S. Patent #'s 7,938,957 , 8,123,957 & other patents pending.

FEATURES

Self-Cleaning Suction Screen

Air Ballast

Pump Skid

Air Lines

Pump Sleeve

Electrical Junction Box

Pump Discharge Flange

AVAILABLE OPTIONS

Self-Cleaning Filter

Pressure Maintenance Pump

Scalable

SHORELINE COMPONENTS

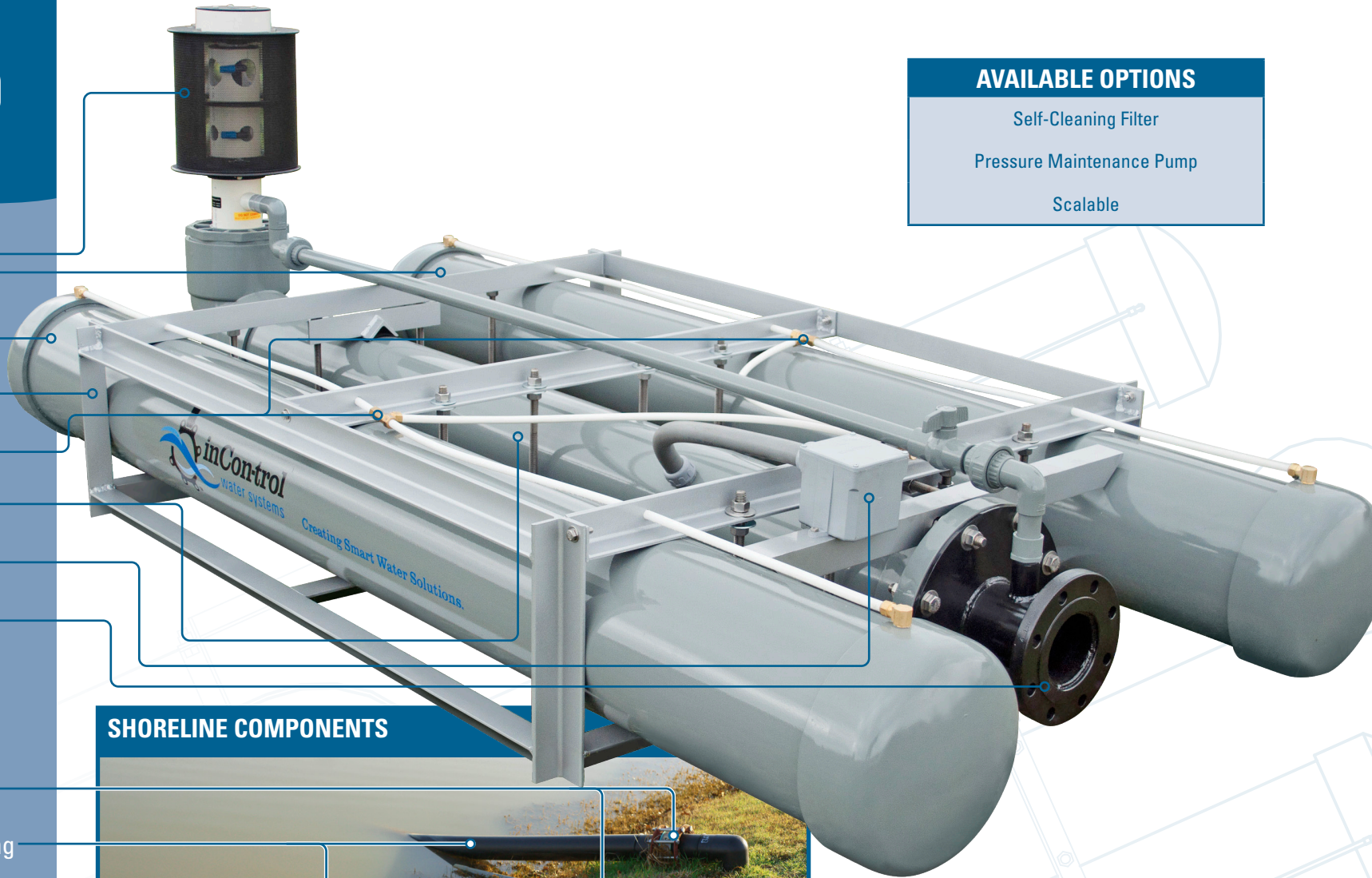
Check Valve

HDPE Discharge Plumbing

Pump Airlines

Pump Electrical

Butterfly Isolation Valve

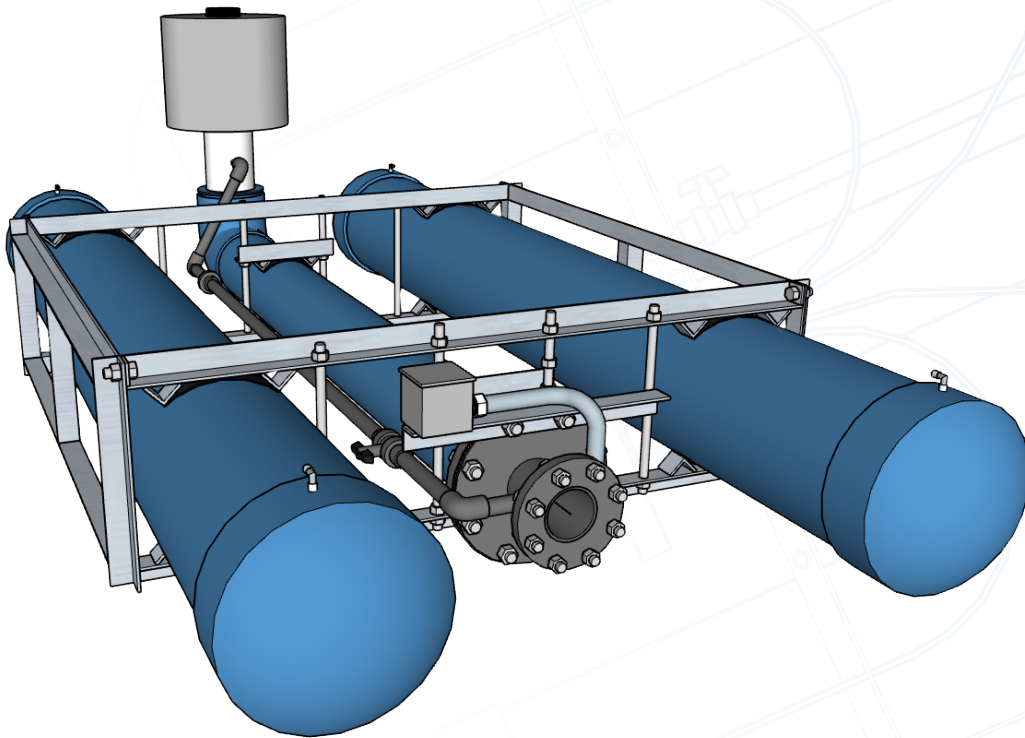


SUBMARINE TURBINE SERIES

Submersible pump station manufactured by inControl Water Systems.

A patented submersible pump that can raise and lower in a body of water.

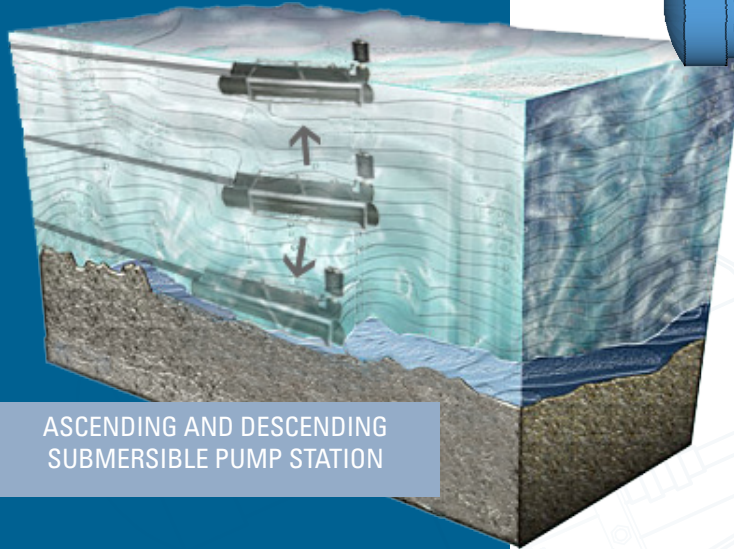
SUITABLE FOR: IRRIGATION • WATER TRANSFER • WATER FEATURES.



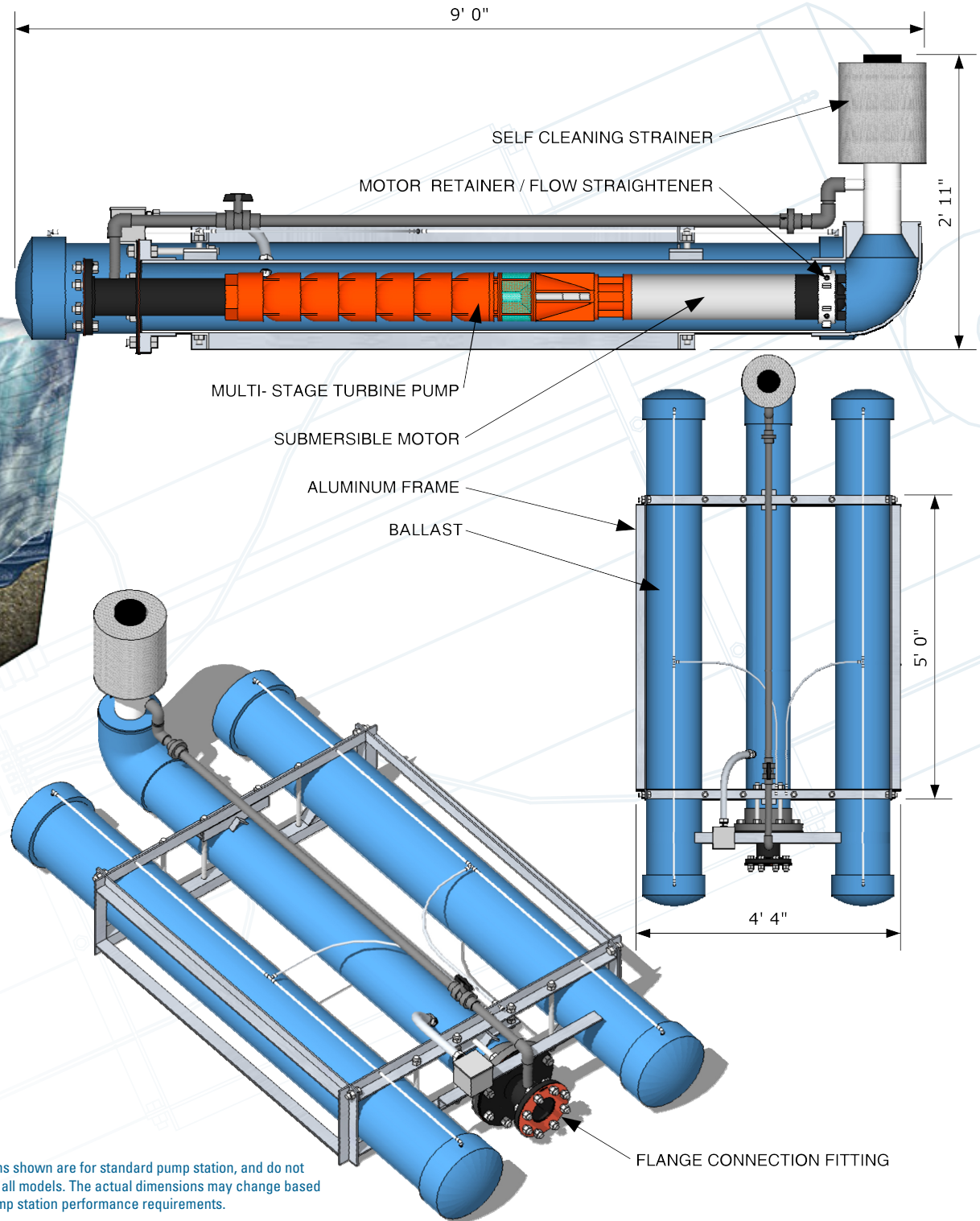
- » Commercial usage
- » Operates on 208 or 240 Volt; Single-Phase or Three-Phase Power
- » Pressure Activated and requires no wired connection to irrigation system
- » Variable Frequency Drive (VFD)
- » UL listed componentry
- » Optional Pressure Maintenance Pump & Self-Cleaning Filter
- » Customized flows and pressures
- » No freezing issues
- » No need for a wet well
- » Always primed
- » Easy Maintenance
- » Self-Cleaning Suction Screen

PATENTED PRODUCT

U.S. Patent #'s 7,938,957 , 8,123,957 & other patents pending.

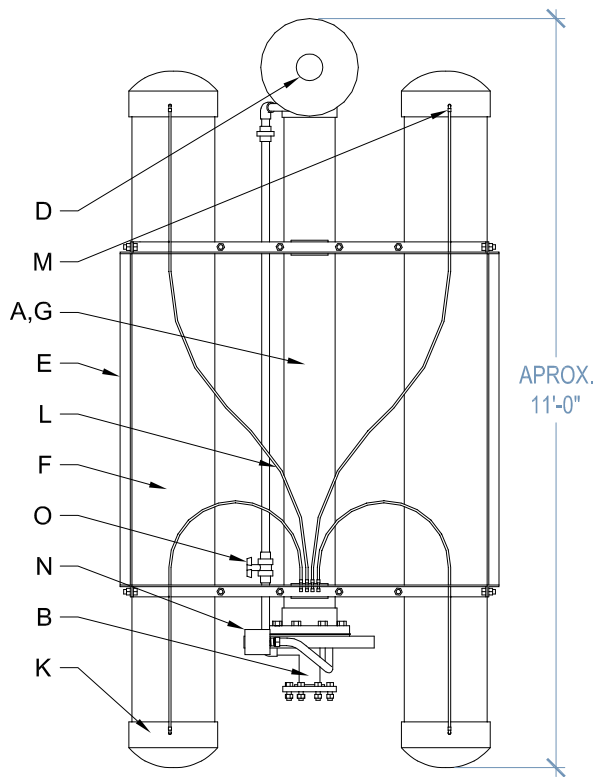


The Submarine Turbine Pump Station utilizes a patented ballast system for ascending and descending the pump station into a body of water. Think about how many problems this solves. No need for wet wells, no priming issues, no scuba drivers needed, no cranes and the Submarine Turbine Series significantly reduces installation costs. Simple repairs can be performed quickly and easily without requiring heavy machinery or removing the pump.



Dimensions shown are for standard pump station, and do not represent all models. The actual dimensions may change based on the pump station performance requirements.

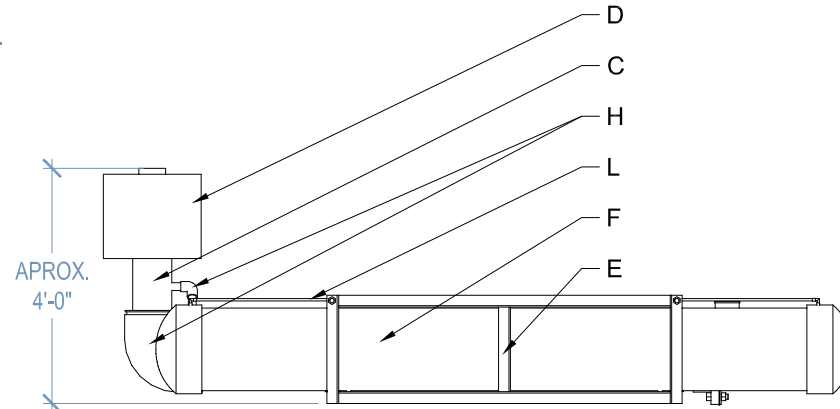
PUMP STATION DETAIL



SUBMARINE TURBINE SERIES

- | | |
|--|----------------------|
| A. SUBMERSIBLE PUMP/MOTOR | L. AIR LINE |
| B. DISCHARGE PLUMBING - FLANGED CONNECTION | M. SHARKBITE FITTING |
| C. SUCTION PLUMBING - PVC | N. ELECTRICAL BOX |
| D. SELF-CLEANING IN-TAKE SCREEN | O. BALL VALVE |
| E. ALUMINUM PUMP SKID | |
| F. BALLAST - PVC | |
| G. PUMP SLEEVE - PVC | |
| H. 90° BEND - PVC | |
| K. END CAP - PVC | |

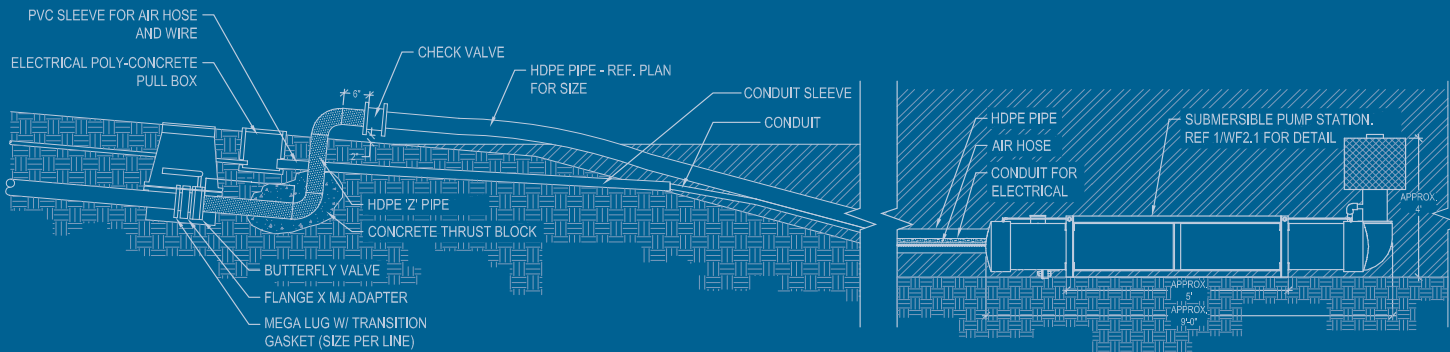
PUMP STATION SHALL BE PRESSURE ACTIVATED, AND REQUIRES NO ELECTRICAL CONNECTION TO THE IRRIGATION SYSTEM.



Pump Station Components: Submersible pumping system, consisting of an aluminum pump skid, submersible pump and motor, suction and discharge points of connections, pressure transducer, variable frequency drive (VFD), disconnect switch and associated fittings. All SUBMARINE TURBINE SERIES pump stations come in three phase, 208 - 240 Volt.

Application: SUBMARINE TURBINE SERIES skid mounted submersible pumping systems is to be used on any project where water needs to be moved. Common applications include irrigation systems, rain water harvesting, and commercial water features/fountains. All SUBMARINE TURBINE SERIES pump stations are built and tested at the factory for the highest degree of quality.

SHORELINE DETAIL



NOTES

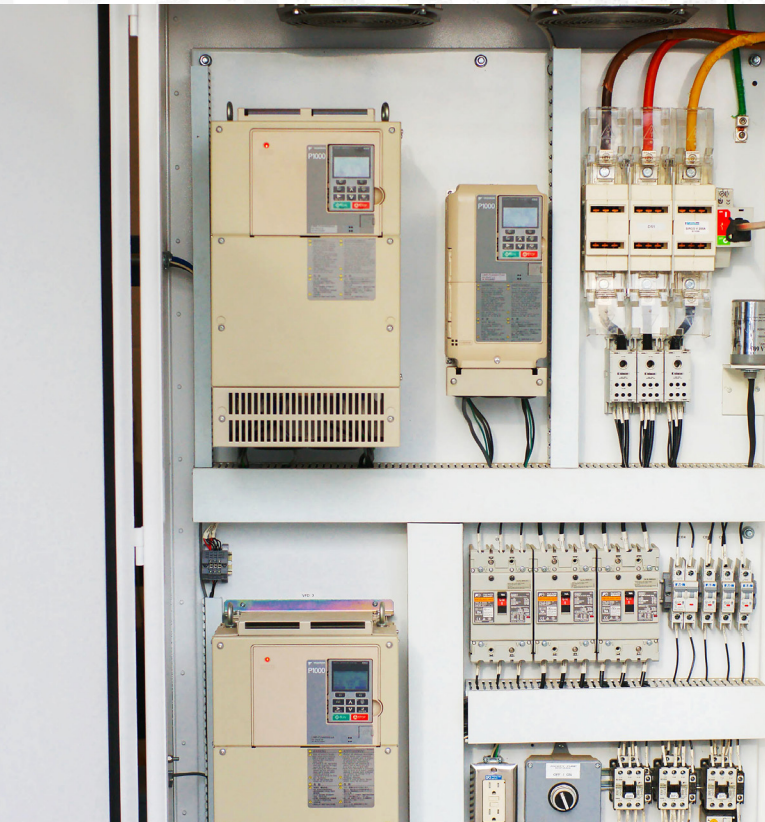
*Water Level needs to be at minimum 18" above self-cleaning screen.
(If not applicable, please contact inCon-trol Water Systems for customization.)*

inCon-trol Water Systems utilizes "Z" pipe configuration that will be visible on the shore line.

SUBMARINE TURBINE SERIES



DEDICATED TO
EXCELLENCE
ON EVERY JOB



All electrical panels are designed, built, & programmed by inCon-trol (Certified UL 508A Panel Shop).



Water Feature Pumps & Pump Stations.



Custom fabrication and project/product mock-ups.

WE WANT TO BE
THE **ONLY SOURCE**
FOR YOUR WATER FEATURES & SYSTEMS
MANUFACTURING
NEEDS





inControl
water systems

www.incontrolwatersystems.com

410 INTERCHANGE ST, MCKINNEY, TX 75071

214.733.8828