

inControl
water systems

WATER HARVESTING SERIES

FEATURES

Metal Corrugated Tank

Tank Access Ladder

Optional

Overflow

Pump Station

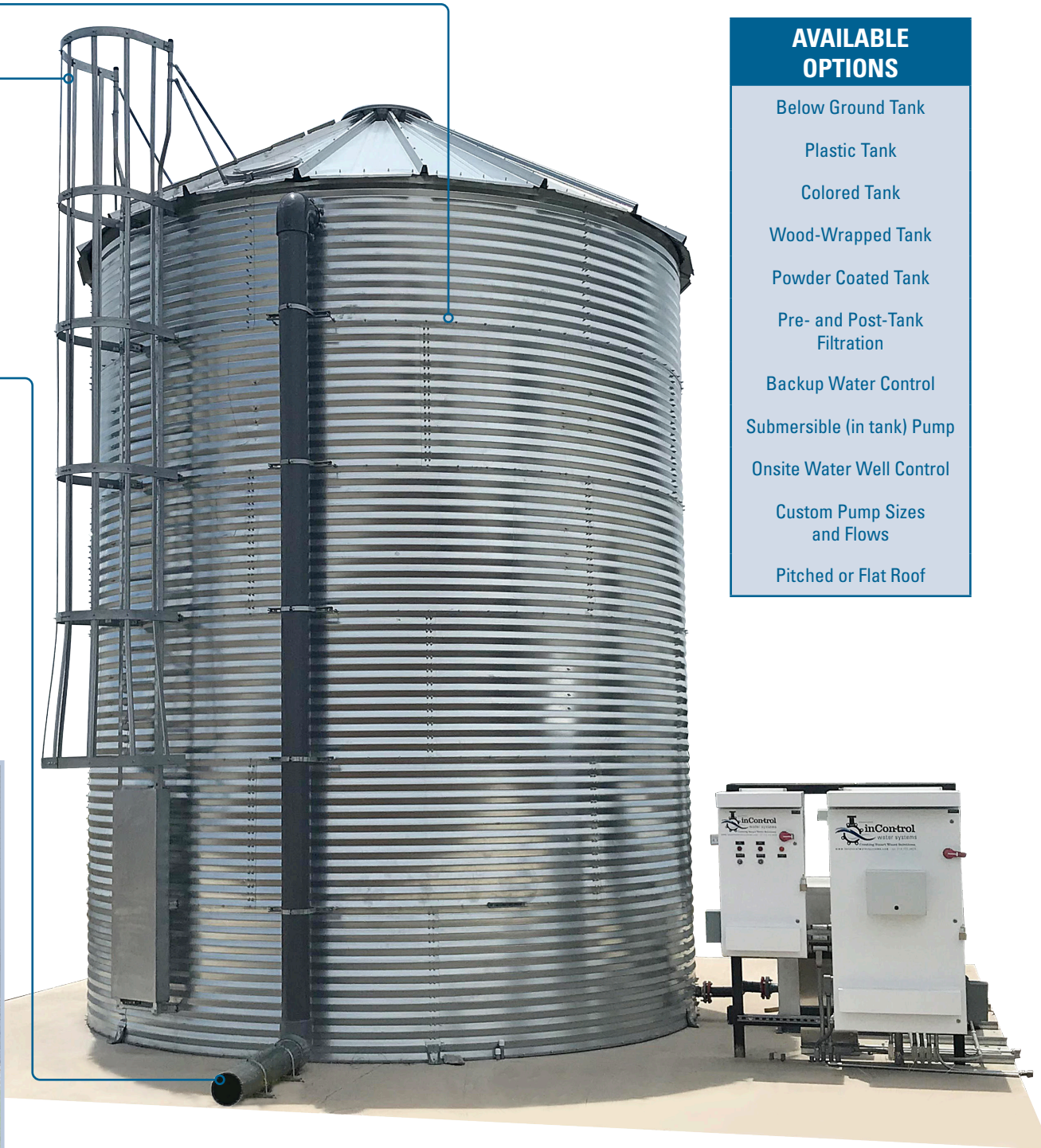
Contact inCon-trol Water Systems for pump station size and series.

Pump Station Suction

Pump Station Discharge

Tank Drain Valve

Level Controls



AVAILABLE OPTIONS

Below Ground Tank

Plastic Tank

Colored Tank

Wood-Wrapped Tank

Powder Coated Tank

Pre- and Post-Tank
Filtration

Backup Water Control

Submersible (in tank) Pump

Onsite Water Well Control

Custom Pump Sizes
and Flows

Pitched or Flat Roof

WATER HARVESTING SERIES

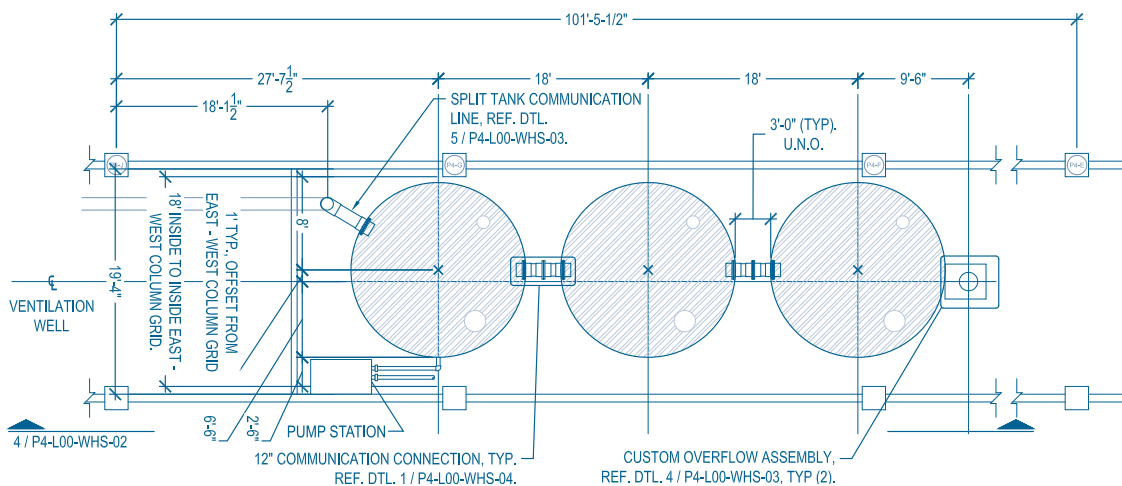
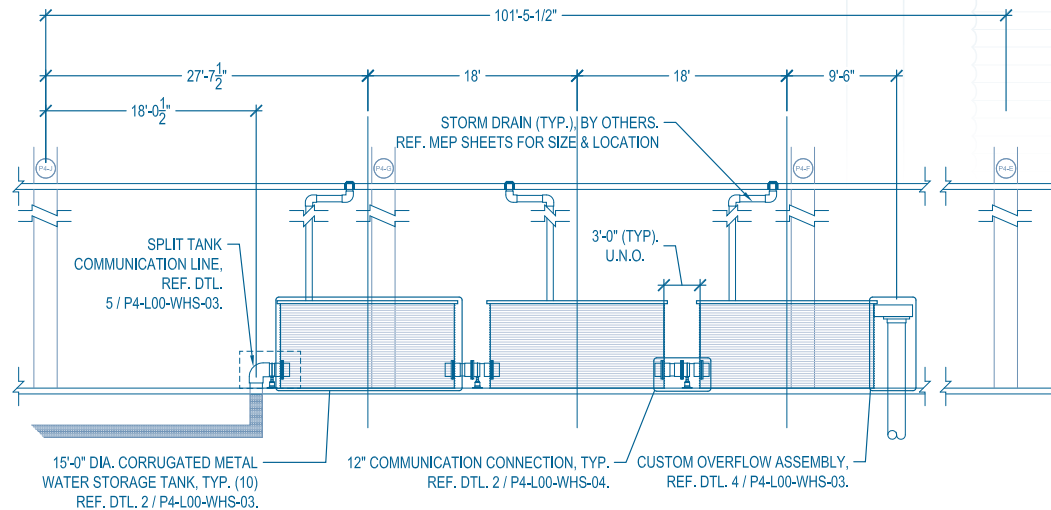
Turnkey water harvesting solutions manufactured by inControl Water Systems.

SUITABLE FOR: IRRIGATION • GRAY WATER REUSE • WATER FEATURES

KEY ELEMENTS

A water harvesting system complete with pump station and tank.

- » Complete system with tank, associated plumbing, and pump system(s)
- » Water collected from hardscapes, HVAC systems, and roofs
- » Water conservation for long term savings
- » Pre- and post-tank filtration
- » Backup water control (from protected water source)
- » Skid-Mounted pumps
- » Project-specific design
- » Custom Controls (Panels & Programming)

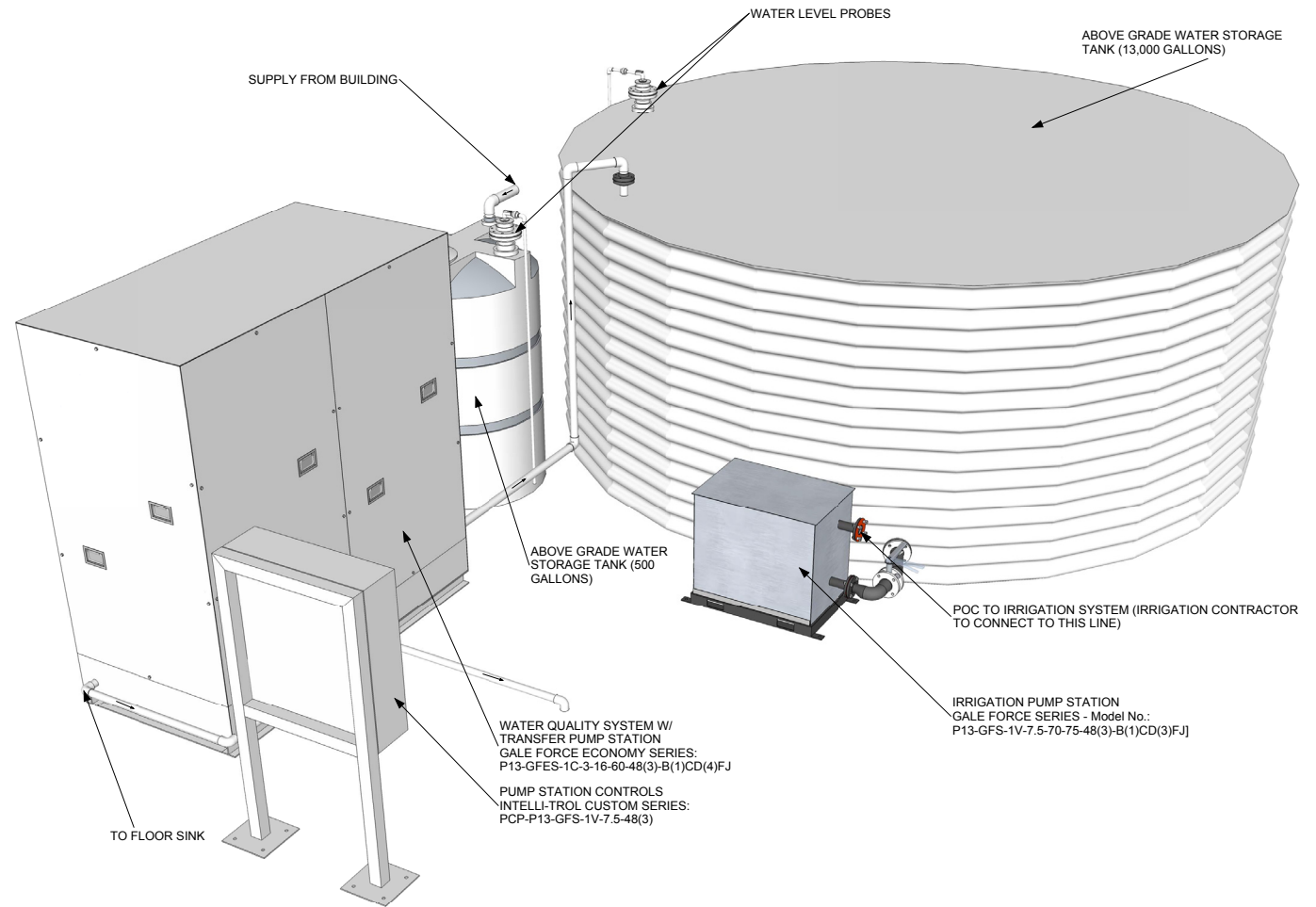


Case Study:

LEGACY TOWER

The Legacy Tower project takes advantage of the 13-story office building's condensate water supply from the HVAC system to irrigate the site. Using condensate water in a Water Harvesting System poses a unique challenge, requiring the water to be treated in order to make it suitable for irrigation purposes.

For the Legacy Tower project, inCon-trol Water Systems provided a separate Water Quality System to treat the condensate water prior to entering the main water storage tank. This Water Quality System contains a separate holding tank for the initial condensate supply water, an ultra-violet (UV) sanitizer, a reverse osmosis system, and transfer pump. First, the condensate water enters the holding tank, it then passes through the Water Quality System, and lastly into the 13,000 gallon main water storage tank as clean irrigation-ready water.



Case Study:

TOYOTA NORTH AMERICAN HEADQUARTERS

inCon-trol Water Systems designed, manufactured and installed one of the largest Rain Water Harvesting Systems in the nation for the Toyota North American Headquarters project in Plano, Texas.

The Rain Water Harvesting System is used to irrigate the corporate campus. The system is capable of storing up to 324,000 gallons of water in forty 15' diameter metal corrugated tanks. The tanks were broken up into four groups of ten with each group of ten located in one of the four parking garages. The tanks are filled with rain water runoff from the top floor of the parking garage as well as a backup two inch city water supply.

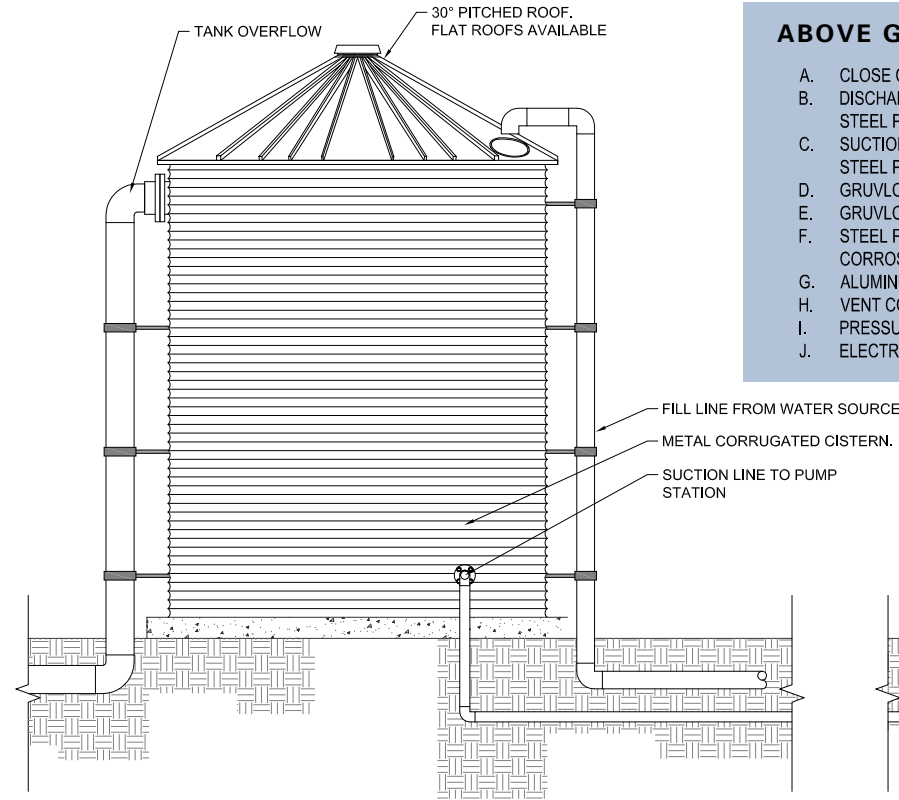
Each group of ten tanks is a complete system that consists of a 7.5 hp Monsoon Force Flooded Suction Pump and a Complete Control package. The Complete Control Package uses a series of radios allowing each group of tanks to communicate with each other critical data such as their water levels.



STANDARD DETAILS

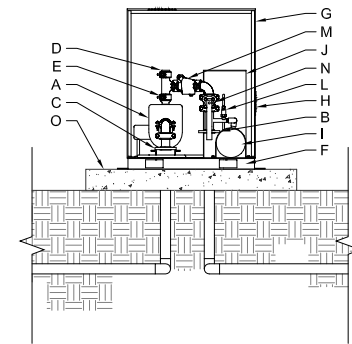
All Water Harvesting Series are available with a Gale Force Eco, Gale Force, Monsoon Force, or Hurricane Force pump station to meet the project specific flow requirements.

Contact inCon-trol Water Systems for Pump Station Size and Series.



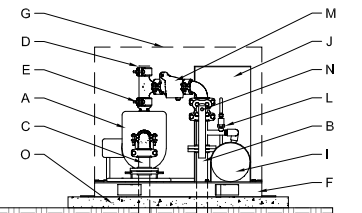
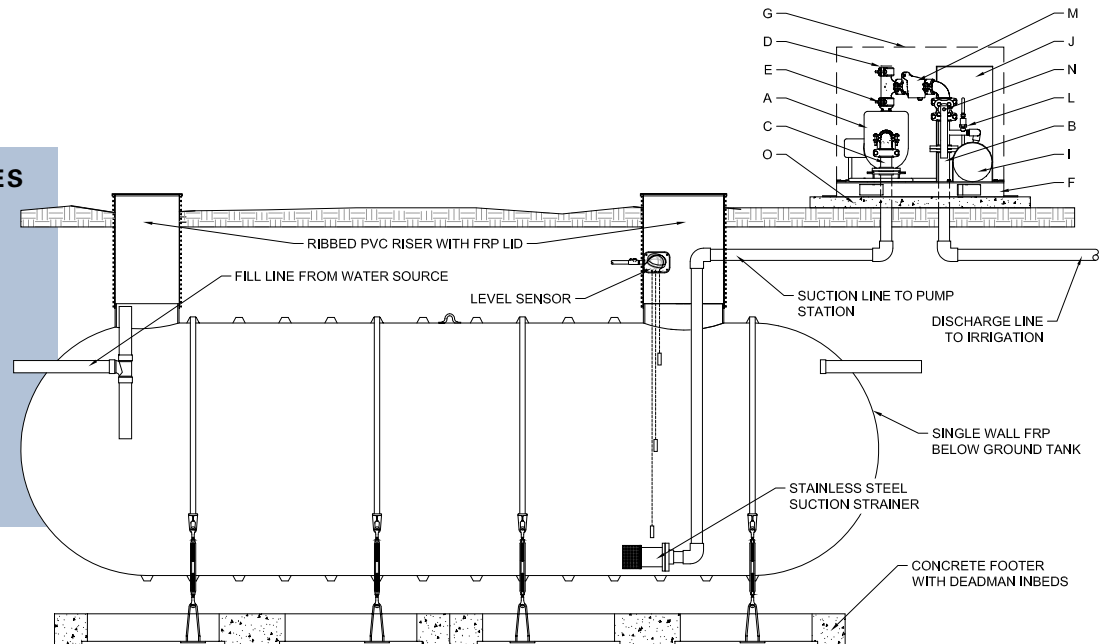
ABOVE GROUND WATER HARVESTING SERIES

- | | |
|---|---|
| A. CLOSE COUPLED PUMP/MOTOR | K. DISCONNECT SWITCH |
| B. DISCHARGE PLUMBING - STEEL PIPE | L. PRESSURE TRANSDUCER |
| C. SUCTION PLUMBING - STEEL PIPE | M. CHECK VALVE |
| D. GRUVLOK CAP | N. BUTTERFLY VALVE |
| E. GRUVLOK STEEL COUPLING | O. CONCRETE PAD |
| F. STEEL PUMP SKID - DIRECT TO METAL CORROSION RESISTANT PAINT. | |
| G. ALUMINUM ENCLOSURE (INSULATED) | *PUMP STATION SHALL BE PRESSURE ACTIVATED, AND REQUIRES NO ELECTRICAL CONNECTION TO THE IRRIGATION SYSTEM.* |
| H. VENT COVERS | |
| I. PRESSURE TANK | |
| J. ELECTRICAL ENCLOSURE | |



BELOW GROUND WATER HARVESTING SERIES

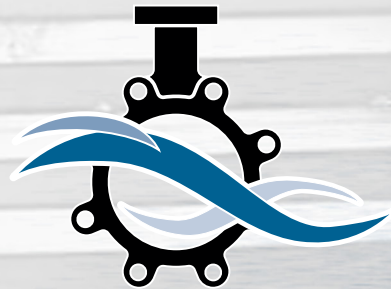
- | | |
|---|---|
| A. CLOSE COUPLED PUMP/MOTOR | K. DISCONNECT SWITCH |
| B. DISCHARGE PLUMBING - STEEL PIPE | L. PRESSURE TRANSDUCER |
| C. SUCTION PLUMBING - STEEL PIPE | M. CHECK VALVE |
| D. GRUVLOK CAP | N. BUTTERFLY VALVE |
| E. GRUVLOK STEEL COUPLING | O. CONCRETE PAD |
| F. STEEL PUMP SKID - DIRECT TO METAL CORROSION RESISTANT PAINT. | |
| G. ALUMINUM ENCLOSURE (INSULATED) | *PUMP STATION SHALL BE PRESSURE ACTIVATED, AND REQUIRES NO ELECTRICAL CONNECTION TO THE IRRIGATION SYSTEM.* |
| H. VENT COVERS | |
| I. PRESSURE TANK | |
| J. ELECTRICAL ENCLOSURE | |



WATER HARVESTING SERIES



DEDICATED ^{TO}
EXCELLENCE
ON EVERY JOB



inControl
water systems

www.incontrolwatersystems.com

410 INTERCHANGE ST, MCKINNEY, TX 75071
214.733.8828