

E Z O C C A S I O N S

The 2026
House Collection

EVENT DESIGN · DRAPING · LIGHTING

WHO WE ARE

We transform tents, venues, and open-air spaces into immersive environments through draping, lighting, and curated installations — from intimate garden dinners to large-scale tented celebrations.

We don't simply decorate spaces. We shape experiences.

Every design is tailored to feel intentional, elevated, and uniquely yours.

WHAT WE DO

From Design to Execution.

After an initial consultation, we compose a full design layout — adding graphics and photographs to our proposals so you can see exactly where each element will live within your space.

Every product we install is impeccable and of the highest quality. All lighting is dimmer-controlled, and on your wedding day our team handles installation and breakdown from start to finish.

CONSULTATION

DESIGN & LAYOUT

INSTALLATION

BREAKDOWN



Reception Installations

Ceiling Draping

Hand-draped swag & panel

One of the most transformative tent enhancements. Flowing fabric softens the structure overhead — catching light, framing chandeliers and floral installations, and lending the whole room an elevated, atmospheric calm.

CUSTOM FABRIC COLORS
AVAILABLE



A bride and groom are shown in profile, smiling as they cut a tall, multi-tiered white wedding cake. The bride is wearing a white strapless gown with a lace bodice and a long train. The groom is in a dark tuxedo. They are standing in a large, open-air event space with a hanging cloud ceiling made of white fabric. In the background, there are tables set for a wedding reception with white linens and dark chairs. Several large, round, crystal chandeliers hang from the ceiling.

Hanging Cloud Ceiling

A modern take on traditional tent draping — dramatic movement, visual depth, and a weightless, cloud-like feel that becomes a striking focal point overhead.

AVAILABLE IN DIFFERENT SIZES & COLORS

Side Pole Draping

Open views, softened lines



Designed to soften tent architecture while maintaining open views and natural light — a quiet, elegant frame that keeps the outdoors in view.

CUSTOM FABRIC COLORS
AVAILABLE

Perimeter Draping

The difference between a tent and an experience

Perimeter draping softens structural lines, adds depth and movement, and creates the feeling of stepping into a thoughtfully designed space — warmer, more elevated, and effortlessly beautiful from every angle.

CUSTOM FABRIC COLORS
AVAILABLE



Valance Draping

The finishing touch



Often the finishing touch of a beautifully draped tent, valance draping conceals hardware and attachment points — creating a polished, tailored edge along the eave line.

SCALLOPED SHAPE OR CUSTOM
TRIM COLORS AVAILABLE

Entrance Draping

Framing the moment guests arrive

Soft fabric, layered details, and thoughtful styling transform tent openings into a statement moment — instantly elevating the space and setting the tone for everything that follows.

AVAILABLE AS A SINGLE OR
DOUBLE BAY



Center Pole Draping

Concealing the structure within



Center poles are among the most visible structural elements inside a tent. Draping conceals these supports with fabric for a softer, more polished look — pairing naturally with chandeliers and ceiling draping for a cohesive design throughout.

PAIRS WITH CEILING & SIDE POLE DRAPING

A large white tent with a chandelier and floral decorations. The tent is set up on a grassy area, and the interior is decorated with white tablecloths, wooden chairs, and large floral arrangements. A chandelier hangs from the ceiling, and a tall wooden pole with a large umbrella is visible. The text "Lighting Installations" is overlaid in the center.

Lighting Installations



LIGHTING · COLLECTION

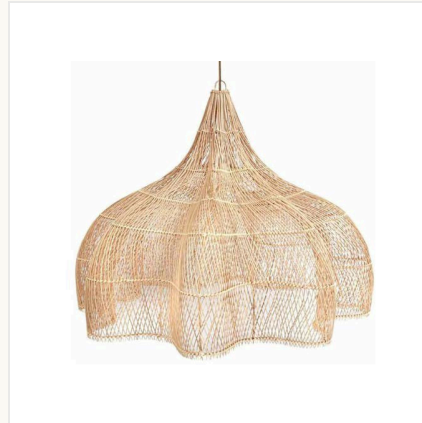
Coastal

Woven rattan and bamboo pendants — natural texture and warm, filtered light, at home under sailcloth and greenery.



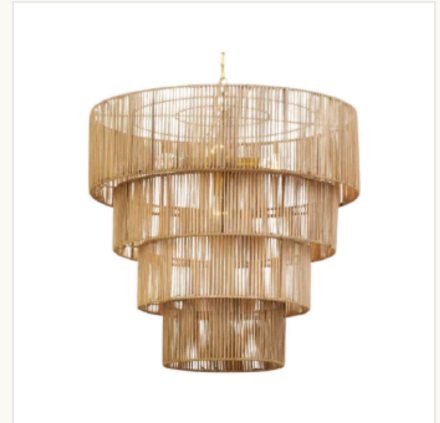
Meadow Pendant

17"H x 24"D



Moonlight Pendant

20"H x 24"D · 24"H x 24"D



Boho Pendant

27"H x 26"D



Newbery Pendant

15"H x 20"D



Leran Pendant

21"H x 20"D



Merri Pendant

20"H x 16"D



LIGHTING · COLLECTION

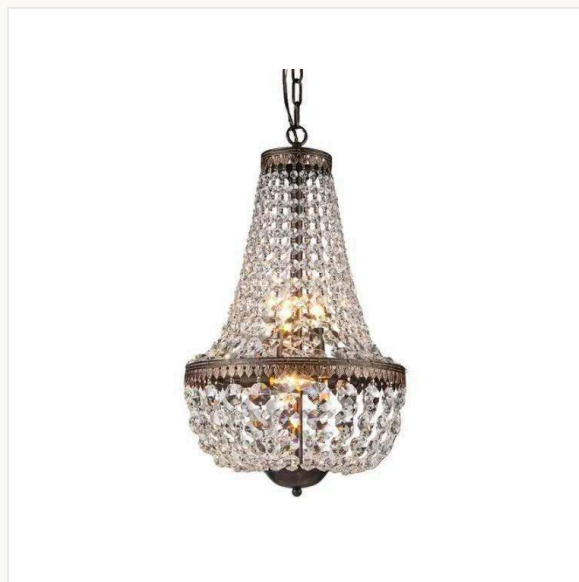
Crystal & Gold

Empire crystal, faceted globes, and warm gilded pendants — timeless glamour suspended overhead.



3' Crystal Empire
Chandelier

34" H x 20" D



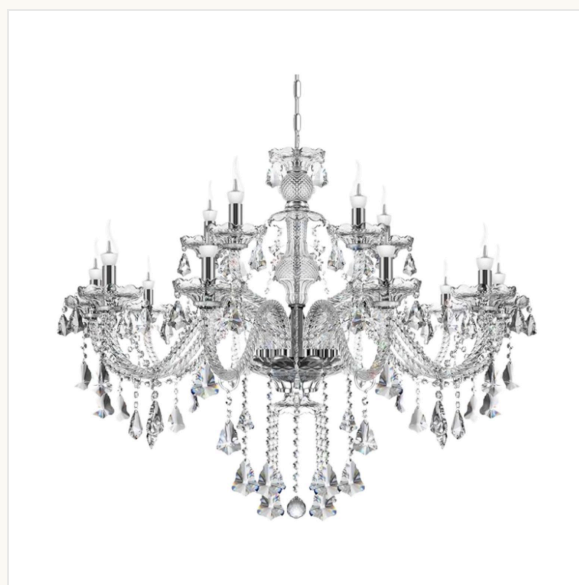
Crystal Empire Chandelier

22" H x 14" D



Crystal Globe Chandelier

16" D · 20" D



Crystal Chandelier

SILVER & SOFT GOLD · 8 / 10 / 15 LIGHTS



Gold Hemisphere
Chandelier

30"H x 26"W



Gold Star Pendant

11"



Gold Globe Pendant

8"D · 10"D



Capiz Honeycomb
Pendant

16"D · 20"D



Coastal Capiz
Chandelier

30"H x 24"W



LIGHTING COLLECTION

Modern

Clean drums, sculptural silhouettes, and playful accents for a contemporary, gallery-like ceiling.



Large Single White Drum
Pendant

24"H x 48"D



3-Tier White Drum
Pendant

23"H x 23"D



Agathon Chandelier

18"H x 36"D



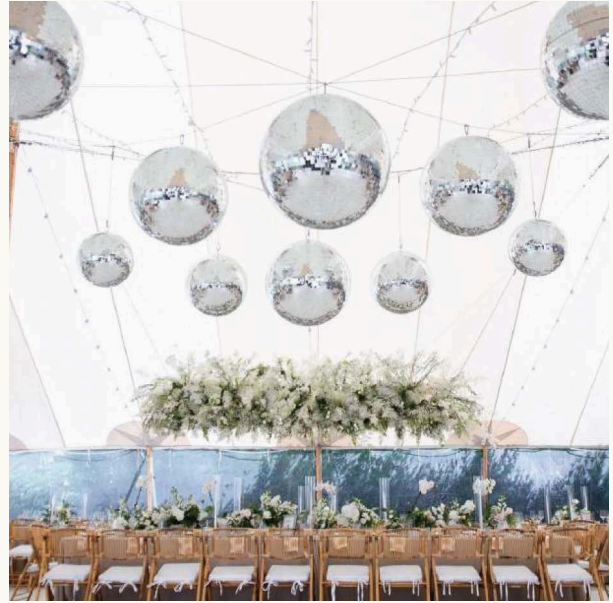
Sinclair Velvet Pendant

7"H x 22"D



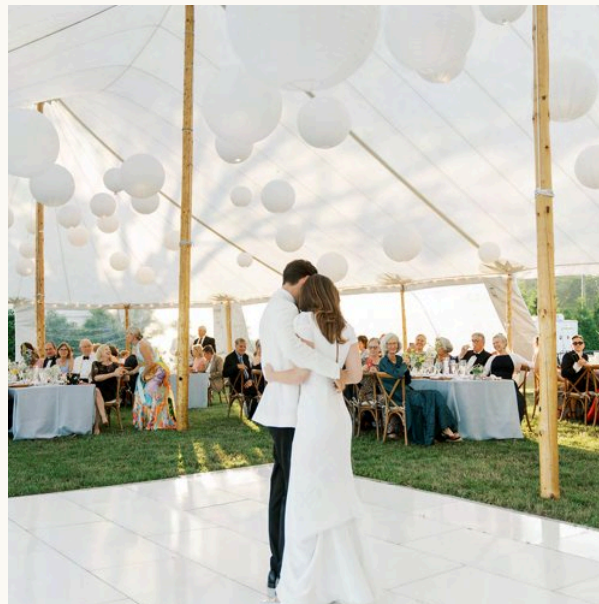
String Tassel Columns

DIFFERENT COLORS & SIZES



Disco Ball

12" · 16" · 24" · 30"



Assorted Paper Lanterns

CURATED GROUPINGS



LIGHTING · COLLECTION

Estate

Wood-bead empires, wrought iron, and beaded silhouettes —
heirloom character with quiet grandeur.



Soft Gold Orb Chandelier

28" H x 23" W · 4 AVAILABLE



Wagon Wheel Chandelier

27" H x 38" W



Empire Beaded Chandelier

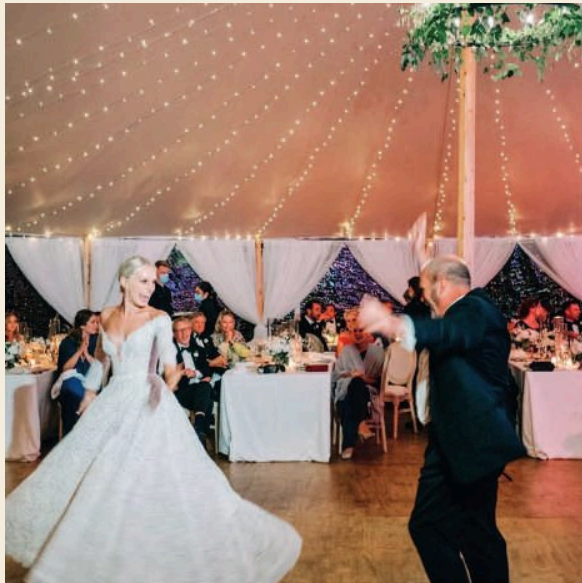
32" H x 22" W



Wrought Iron Chandelier

37" H x 34" W

A ceiling full of light



Twinkle Lighting



Bistro Lighting



Icicle Lighting



Architectural Lighting

Warm washes that trace tent lines and structure — shaping the whole room in light.



Wireless LED Up-
Light

TECHNICIAN NEEDED FOR MULTI-
FUNCTIONS



Pin Spot Lighting

FOCUSED HIGHLIGHTS



Structures
& Décor

Floral Trellises & Structures

A foundation for overhead design



Designed for suspended florals, greenery, chandeliers, and statement décor, our wood and metal structures create a secure foundation for overhead installations. Professional installation is included, and our team works directly with your florist to seamlessly integrate lighting, florals, and other design elements.

Wall Draping & Backdrops

Our most sought-after design element



Pipe and drape adds softness, texture, and depth to any space. Flowing pleats create a romantic atmosphere — transforming tent backdrops, ceremony spaces, and event interiors into beautifully finished focal points.

Floral Walls



Florence

ROSE & GRASS WALL · 8' × 8'



Nantucket

ROSE WALL · 8' × 8'



Marbella

TROPICAL GREENERY WALL · 7' × 7'

A lush, full-coverage backdrop for ceremonies, photo moments, and bars — installed floor to frame.

Oriental Silk Lanterns

Colour, suspended overhead



Hand-shaped silk lanterns bring vivid colour and a festive, celebratory mood overhead — clustered above a dance floor or scattered across a tented ceiling for a warm, glowing canopy.

Landscape Lighting

Carrying the celebration outdoors



Market and bistro lighting draw the celebration beyond the tent — across lawns, terraces, and waterfronts. Decorative post planters with free-standing poles carry light and greenery wherever guests gather.



Part Four

Ceremony Installations

Arbors



2-Post Single Layer
Arbor



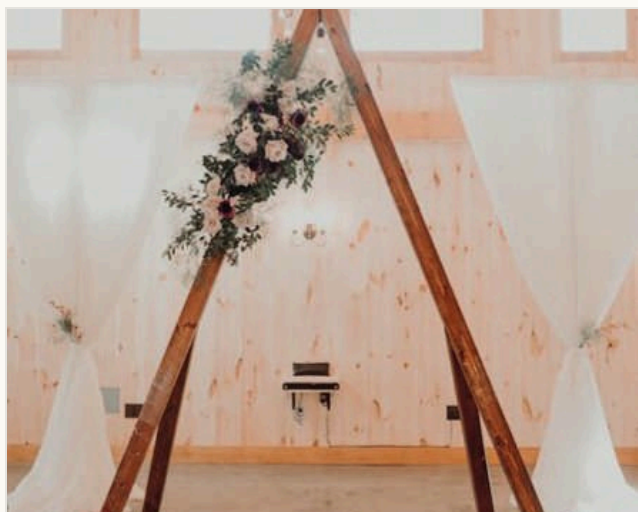
Wooden Arch & Draping



2-Post Multi-Layer Arbor

Hand-built wood frames dressed in soft fabric and florals — the anchor for your ceremony moment.

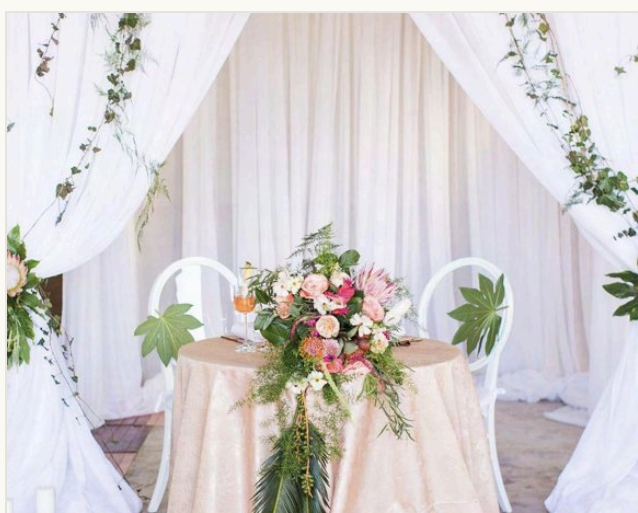
Arches & Canopies



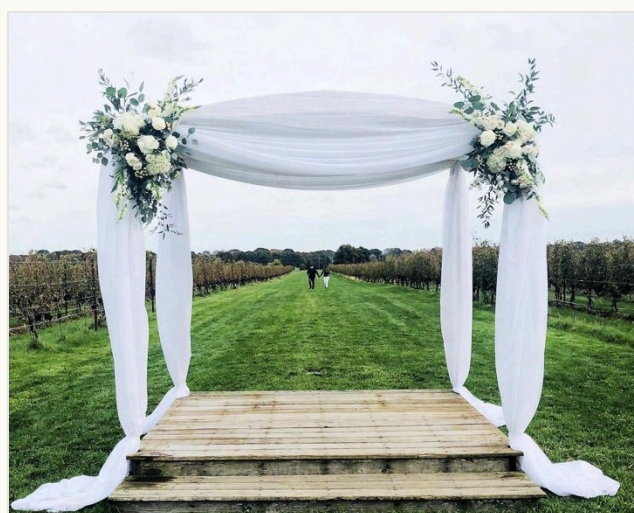
Triangular Arch



Hexagonal Arch



4-Post Chuppah with Ceiling Draping



4-Post Canopy
MULTIPLE COLORS AVAILABLE

Terms & Conditions

MINIMUM SERVICE FEE

Minimum orders start at \$2,500 for events within 30 miles of Uncasville, CT, and \$4,500 beyond the 30-mile radius. Events over 80 miles are considered destination weddings, with different minimum service and lodging fees. Minimums exclude delivery fees.

MANAGEMENT FEE

A 6% management fee is added to all proposals, and includes unlimited layouts & drawings up to eight weeks from the event date, in-person or phone consultations, site visits (if required), payment processing, fabric samples, and certifications (if required).

QUOTING & BOOKING

We have a minimum response time of 72 hours. To reserve your date, a 50% retainer deposit and a signed contract are required.

INSTALLATION REQUIREMENTS

Two weeks prior to installation we contact the venue for access time. For installations over three hours of labor, bathrooms must be accessible during install and breakdown. Clear-top tents require air conditioning when weather reaches 80°F or higher. Moving any pre-set rental items incurs additional labor fees, assessed after installation.

Terms *continued*

RIGGING OF FABRIC & LIGHTING

Pricing includes next-day breakdown fees and is subject to change based on scope, venue and tent type, location, and accessibility. Additional fees apply to waterfront venues and rigging points exceeding 17' in height. Additional labor fees start at \$500 depending on scope.

LATE-NIGHT DELIVERY & PICK-UP

A \$450 starting fee applies for delivery and pick-up between 7 PM & 6 AM. For events within one hour of Uncasville, CT: if the tent must be removed before 9 AM the following day, breakdown occurs immediately after the reception and same-night fees apply.

TRAVEL & DELIVERY

Delivery is based on a \$100 hourly rate to & from an event for both setup and breakdown. Delivery requiring a box truck is based on a \$150 hourly rate.

HOLIDAY & SAME-WEEK

A \$400 starting fee applies on holiday weekends: New Year's, Easter Sunday, Memorial Day, 4th of July, Labor Day, Columbus Day, Thanksgiving, and Christmas. A \$250 fee applies to all new events booked within 10 days of the event date.

E Z O C C A S I O N S

Let's design something
unforgettable.

(860) 271-5099

karina.alvarez@ez-occasions.com

ez-occasions.com

@ez_occasions