

INCON-TROL WATER SYSTEMS, **HURRICANE FORCE SERIES**, IRRIGATION PUMP STATION. POWER TO BE PROVIDED BY OWNER TO PUMP CONTROL PANEL, AND ELECTRICAL CONNECTION TO THE CONTROL PANEL BY OTHERS. PUMP STATION SHALL BE PRESSURE ACTIVATED, **AND REQUIRES NO ELECTRICAL CONNECTION TO THE IRRIGATION SYSTEM**. CONTACT INCON-TROL WATER SYSTEMS AT 214.733.8828 (EXT. 1), FOR FURTHER INFORMATION.

(PUMP STATION SHALL INCLUDE (2) MAIN PUMP/MOTORS, (1) LOW FLOW PUMP/MOTOR, VARIABLE FREQUENCY DRIVE(S), PLC BASED CONTROLS WITH HMI [TYPE 3R FORCED-AIR VENTILATION ENCLOSURE], FLOW METER, LIGHTNING/SURGE ARRESTOR, PRESSURE ACTIVATED START, AND HEATED/INSULATED ALUMINUM ENCLOSURE).

ELECTRICAL SERVICE TO BE PROVIDED BY OWNER  
BREAKER SIZE TO BE PROVIDED BY INCON-TROL

**NOTES:**

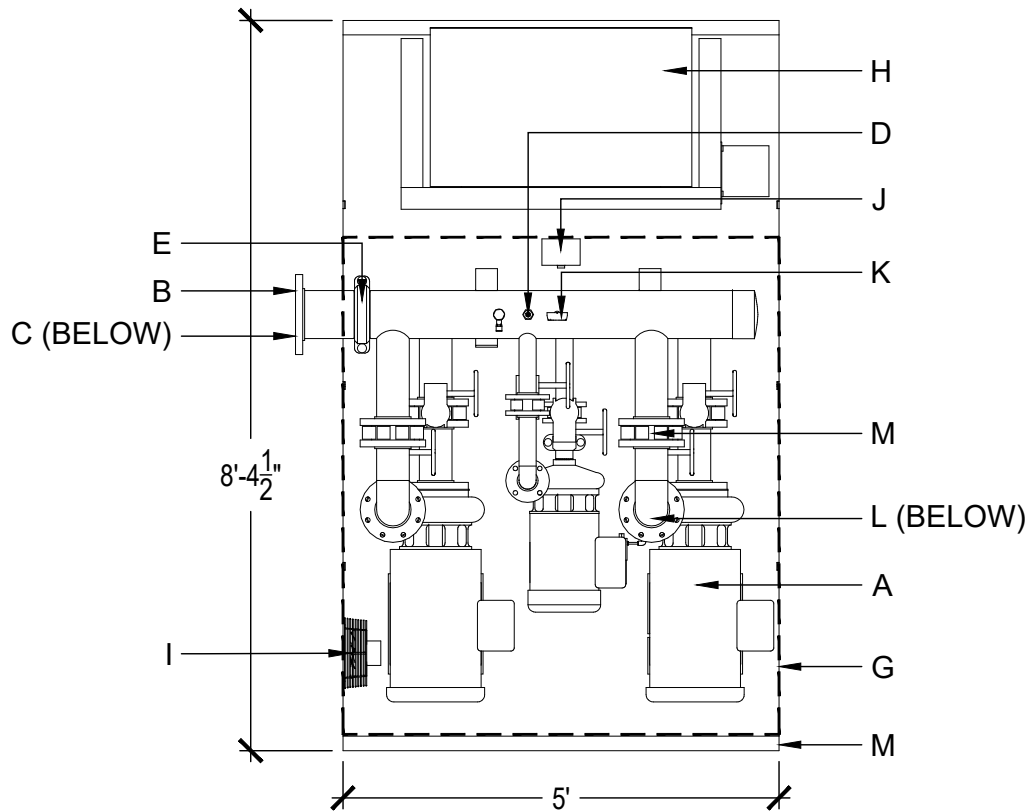
- PUMP STATION PLUMBING SHALL BE STEEL, PAINTED WITH DIRECT TO METAL CORROSION RESISTANT PAINT
- SLOPE FINISH GRADE AWAY FROM PUMP STATION / CONCRETE PAD.
- SECURELY ANCHOR PUMP STATION TO CONCRETE PAD.

**INCON-TROL WATER SYSTEMS: HURRICANE FORCE SERIES**

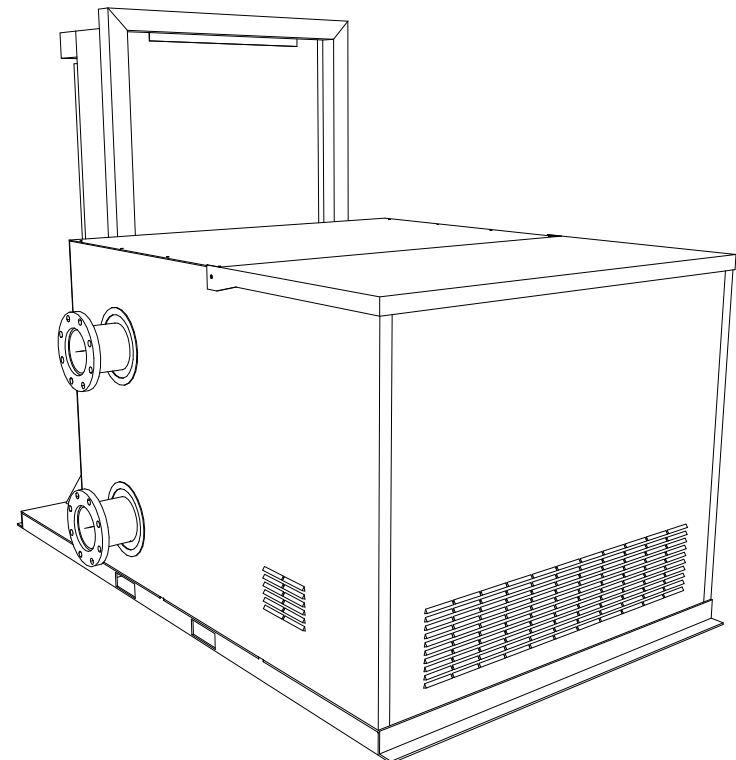
- |   |                    |
|---|--------------------|
| A. CLOSE COUPLED PUMP/MOTOR   | K. PRESSURE GAUGE  |
| B. DISCHARGE PLUMBING - 6" STEEL PIPE                               | L. CHECK VALVE     |
| C. SUCTION PLUMBING - 6" STEEL PIPE                                 | M. BUTTERFLY VALVE |
| D. PRESSURE TRANSDUCER  |                    |
| E. GRUVLOK STEEL COUPLING   |                    |
| F. ALUMINUM PUMP SKID   |                    |
| G. ALUMINUM ENCLOSURE (INSULATED)                                   |                    |
| H. ELECTRICAL ENCLOSURE (TYPE 3R FORCED-AIR VENTILATION ENCLOSURE). |                    |
| I. EXHAUST FAN  |                    |
| J. HEATER ( THERMOSTATICALLY CONTROLLED ).                          |                    |

**NOTE:**  
ALL STEEL COMPONENTS TO BE PAINTED WITH DIRECT TO METAL CORROSION RESISTANT PAINT.

PUMP STATION SHALL BE PRESSURE ACTIVATED, AND REQUIRES NO ELECTRICAL CONNECTION TO THE IRRIGATION SYSTEM.

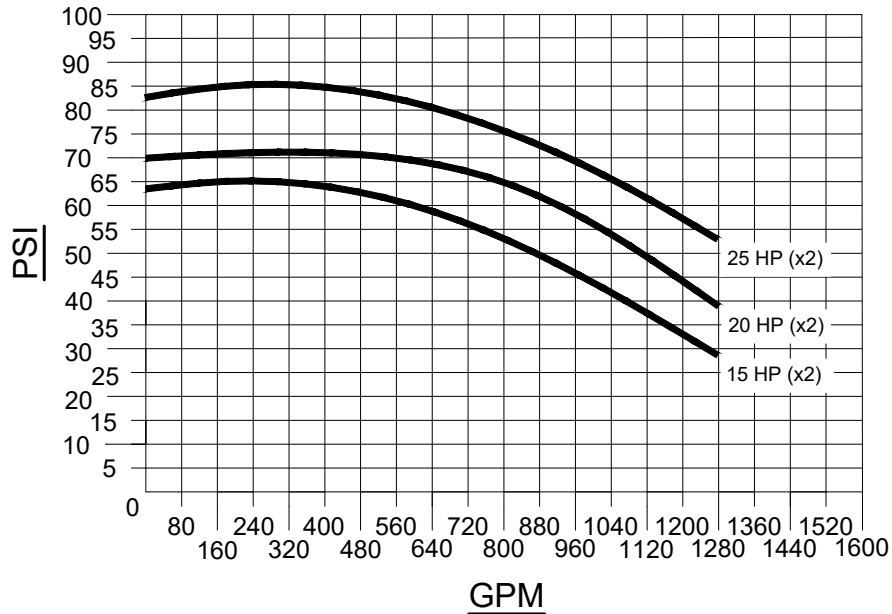


REQUIRED GPM: \_\_\_\_\_ REQUIRED PSI: \_\_\_\_\_



## HURRICANE FORCE SERIES PUMP CURVE

3 PHASE ELECTRICAL DATA		
HP	VOLTAGE	SERVICE SIZE
15	208	175A
20	208	200A
25	208	250A
HP	VOLTAGE	SERVICE SIZE
15	240	150A
20	240	175A
25	240	225A
HP	VOLTAGE	SERVICE SIZE
15	480	70A
20	480	90A
25	480	110A



HURRICANE SERIES 15HP	
PSI	GPM
65	240
32	1200

HURRICANE SERIES 20HP	
PSI	GPM
72	360
47	1160

HURRICANE SERIES 25HP	
PSI	GPM
86	280
58	1220

\*The **HURRICANE FORCE SERIES** Pump Station is a duplex pump system. To achieve requested GPM, two pumps are required.

**FINAL HORSEPOWER TO BE SIZED BY INCON-TROL WATER SYSTEMS. USE GRAPH FOR PRELIMINARY SIZING ONLY.**

**SPECIFICATION DATA:** SKID MOUNTED PUMPING SYSTEM, CONSISTING OF AN ALUMINUM ENCLOSURE, CLOSE COUPLED MOTOR DRIVEN PUMP, SUCTION AND DISCHARGE POINTS OF CONNECTIONS, PRESSURE TRANSDUCER, VARIABLE FREQUENCY DRIVE (VFD), DISCONNECT SWITCH AND ASSOCIATED FITTINGS. ALL **HURRICANE FORCE SERIES** PUMP STATIONS COME IN 208 VOLT, 240 VOLT, AND 480 VOLT, THREE PHASE POWER.

**APPLICATION:** **HURRICANE FORCE SERIES** SKID MOUNTED PUMPING SYSTEMS IS TO BE USED ON ANY PROJECT WHERE WATER NEEDS TO BE MOVED. COMMON APPLICATIONS INCLUDE IRRIGATION SYSTEMS, RAIN WATER HARVESTING, AND COMMERCIAL WATER FEATURES/FOUNTAINS. THIS SERIES CAN BE CONFIGURED AS, FLOODED-SUCTION, SUCTION-LIFT, OR BOOSTER PUMPS. ALL **HURRICANE FORCE SERIES** PUMP STATIONS ARE BUILT AND TESTED AT THE FACTORY FOR THE HIGHEST DEGREE OF QUALITY.

REVISIONS

# HURRICANE FORCE SERIES DETAIL SHEET



TITLE Detail Sheet  
 DATE 01/01/2019  
 SCALE 1/2" = 1'-0"  
 SHEET 1 of 1