



The Suit & Tuxedo

**RENTAL COLLECTION**

**MR**  
MARCELLO / ROCCO

  
**TUXEDO**

Slim Fit Styles for  
**EVERY BODY**



**MR TUXEDO**  
MARCELLO / NOCCO

**Fashion-Forward & Comfortable  
for any shape or size**

(up to size 74)



shown:  
**ALLURE MEN®**  
Allure Men Heather Grey Clayton Suit - Style 262/N262



# RENT OR BUY

THE SAME DESIGNER STYLES SO THE WHOLE PARTY MATCHES



## RENT OR BUY STYLES



**MICHAEL KORS**  
Legacy Performance Stretch  
Slim Fit Tuxedo

To Rent Style 921 see page 17  
To Buy Style N921 see page 6 in  
the JFW For Purchase Catalog



**MICHAEL KORS**  
Black Performance Stretch  
Slim Fit Wedding Suit

To Rent Style 421 see page 18  
To Buy Style N421 see page 9 in  
the JFW For Purchase Catalog



**MICHAEL KORS**  
Tan Performance Stretch  
Slim Fit Wedding Suit

To Rent Style 272 see page 19  
To Buy Style N272 see page 7 in  
the JFW For Purchase Catalog



**MICHAEL KORS**  
Milan Performance Stretch  
Slim Fit Tuxedo

To Rent Style 931 see page 21  
To Buy Style N931 see page 8 in  
the JFW For Purchase Catalog



**MICHAEL KORS**  
Blue Performance Stretch  
Slim Fit Wedding Suit

To Rent Style 302 see page 23  
To Buy Style N302 see page 11  
in the JFW For Purchase Catalog



**MICHAEL KORS**  
Medium Grey Performance Stretch  
Slim Fit Wedding Suit

To Rent Style 350 see page 24  
To Buy Style N350 see page 12  
in the JFW For Purchase Catalog



**ALLURE MEN**  
Heather Grey Clayton  
Slim Fit Suit

To Rent Style 262 see page 25  
To Buy Style N262 see page 14  
in the JFW For Purchase Catalog



**MICHAEL KORS**  
Navy Sterling  
Wedding Suit

To Rent Style 372 see page 29  
To Buy Style N372 see page 10  
in the JFW For Purchase Catalog



**MICHAEL KORS**  
Steel Grey Sterling  
Wedding Suit

To Rent Style 392 see page 31  
To Buy Style N392 see page 13  
in the JFW For Purchase Catalog



**MÖD**  
Granite Aries Paisley  
Slim Fit Tuxedo

To Rent Style 192 see page 36  
To Buy Style N192 see page 33  
in the JFW For Purchase Catalog



**MÖD**  
Black Aries Paisley  
Slim Fit Tuxedo

To Rent Style 182 see page 37  
To Buy Style N182 see page 32  
in the JFW For Purchase Catalog



**MÖD**  
White/Silver Aries Paisley  
Slim Fit Tuxedo

To Rent Style 172 see page 40  
To Buy Style N172 see page 31  
in the JFW For Purchase Catalog



**stephengeoffrey**  
Ivory Classic Shawl  
Wedding Tuxedo

To Rent Style 601 see page 47  
To Buy Style N601C see page 17  
in the JFW For Purchase Catalog



**stephengeoffrey**  
White Classic Shawl  
Wedding Tuxedo

To Rent Style 701 see page 50  
To Buy Style N70 see page 17 in  
the JFW For Purchase Catalog

RENT OR BUY



### Groom Look

To Buy Style N192:  
see page 33 in the  
JFW For Purchase Catalog

### Groomsmen Look

To Rent Style 421:  
see page 18



### Groom Look

To Buy Style N272C:  
see page 7 in the  
JFW For Purchase Catalog

### Groomsmen Look

To Rent Style 421:  
see page 18



RENT OR BUY



### Groom Look

To Buy Style NOBC:  
see page 27 in the  
JFW For Purchase Catalog

### Groomsmen Look

To Rent Style 302:  
see page 23



### Groom Look

To Buy Style NHSC:  
see page 26 in the  
JFW For Purchase Catalog

### Groomsmen Look

To Rent Style 350:  
see page 24



### Groom Look

To Buy Style N292C:  
see page 15 in the  
JFW For Purchase Catalog

### Groomsmen Look

To Rent Style 202:  
see page 26



### Groom Look

To Buy Style NHGC:  
see page 23 in the  
JFW For Purchase Catalog

### Groomsmen Look

To Rent Style 421:  
see page 18



RENT OR BUY

**2** PANT FITS **1** PERFECT FIT

**MODERN & SLIM FIT OPTIONS**  
Tailored to Your Style



**Groom Look**

Black Slim Fit  
Performance Stretch Pants  
Pant Style: 921

**Groomsmen Look**

Black Modern Fit  
Performance Stretch Pants  
Pant Style: 920



251-Slim Fit Pant

252-Modern Fit Pant



371-Slim Fit Pant

372-Modern Fit Pant



921-Slim Fit Pant

920-Modern Fit Pant



272-Slim Fit Pant

270-Modern Fit Pant



391-Slim Fit Pant

392-Modern Fit Pant



991-Slim Fit Pant

990-Modern Fit Pant



**921-Legacy Performance Stretch**  
Slim Fit Tuxedo  
by Michael Kors  
page 17



**421-Black Performance Stretch**  
Slim Fit Wedding Suit  
by Michael Kors  
page 18



**931-Milan Performance Stretch**  
Slim Fit Tuxedo  
by Michael Kors  
page 21



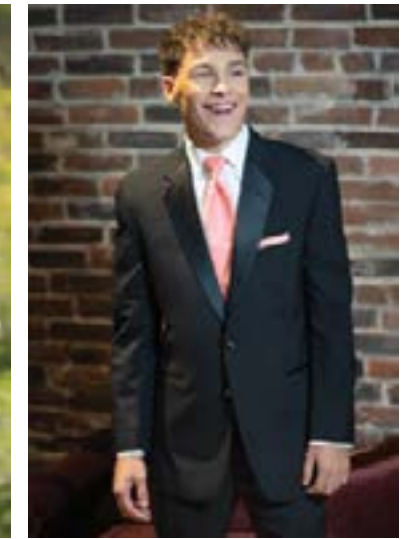
**981-Force Performance Stretch**  
Slim Fit Tuxedo  
by Michael Kors  
page 22



**852-Emerson**  
Modern Fit Tuxedo  
by Stephen Geoffrey  
page 42



**822-Cyprus**  
Modern Fit Tuxedo  
by Stephen Geoffrey  
page 43



**802-Black Troy**  
Modern Fit Tuxedo  
by Stephen Geoffrey  
page 44



**990-Berkeley**  
Modern Fit Tuxedo  
by Michael Kors  
page 32



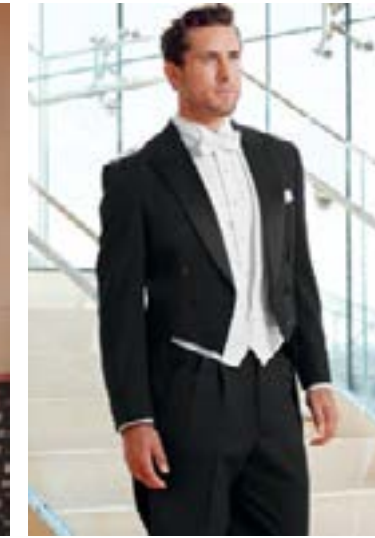
**192-Granite Aries Paisley**  
Slim Fit Tuxedo  
by Mark of Distinction  
page 36



**182-Black Aries Paisley**  
Slim Fit Tuxedo  
by Mark of Distinction  
page 37



**820-Classic Notch**  
Traditional Fit Tuxedo  
page 49



**588-Classic Peak Fulldress**  
Traditional Fit Tuxedo  
page 51

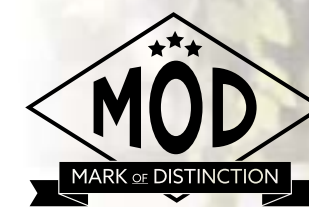


**880-Classic Peak**  
Traditional Fit Tuxedo  
page 52

## MICHAEL KORS

**Legacy Slim Fit  
Performance Stretch Tuxedo**  
Style 921

Photo Courtesy of:  
Joleen Willis Photography  
joleenwillis.com



**Black Aries Paisley  
Slim Fit Tuxedo**  
Style 182



# GREY/GREEN STYLES



**350-Medium Grey Performance Stretch**  
Slim Fit Wedding Suit  
by Michael Kors  
page 24



**262-Heather Grey Clayton**  
Slim Fit Suit  
by Allure Men  
page 25



**391-Steel Grey Sterling**  
Slim Fit Wedding Suit  
by Michael Kors  
page 30



**392-Steel Grey Sterling**  
Modern Fit Wedding Suit  
by Michael Kors  
page 31



**222-Hunter Green Luka**  
Slim Fit Suit  
by Ike Behar  
page 27



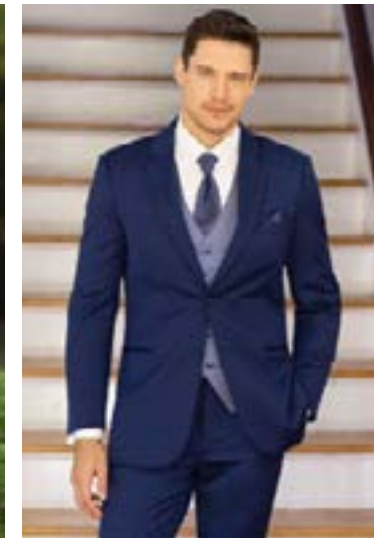
## ALLURE MEN

**Heather Grey Clayton**  
Slim Fit Suit  
Style 262

# BLUE/RED STYLES



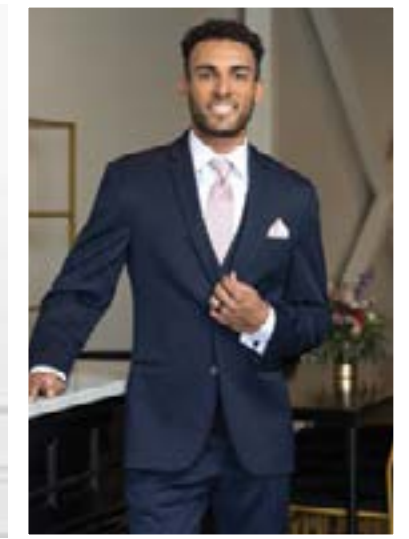
**311-Navy Performance Stretch**  
Slim Fit Tuxedo  
by Michael Kors  
page 20



**302-Blue Performance Stretch**  
Slim Fit Wedding Suit  
by Michael Kors  
page 23



**371-Navy Sterling**  
Slim Fit Wedding Suit  
by Michael Kors  
page 28



**372-Navy Sterling**  
Modern Fit Wedding Suit  
by Michael Kors  
page 29



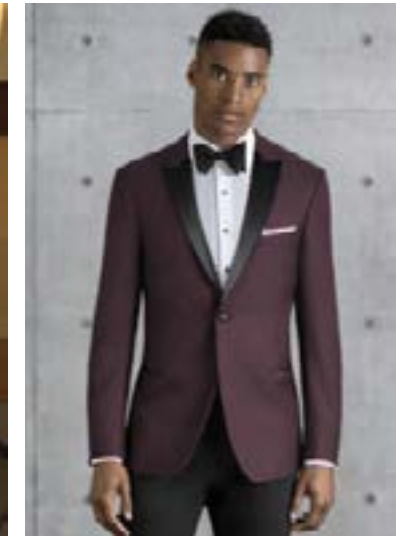
**211-Cobalt Blue Tribeca**  
Slim Fit Tuxedo  
by Ike Behar  
page 34



**221-Indigo Blue Lane**  
Slim Fit Tuxedo  
by Ike Behar  
page 35



**132-Cobalt Aries Paisley**  
Slim Fit Tuxedo  
by Mark of Distinction  
page 39



**201-Burgundy Empire**  
Slim Fit Tuxedo  
Kenneth Cole  
page 33



**122-Apple Red Aries Paisley**  
Slim Fit Tuxedo  
by Mark of Distinction  
page 38

## MICHAEL MICHAEL KORS

**Blue Performance Stretch**  
Slim Fit Wedding Suit  
Style 302



# TAN, WHITE & IVORY STYLES

# FASHION STYLES



**272-Tan Performance Stretch**  
Slim Fit Wedding Suit  
by Michael Kors  
page 19



**202-Sand Brunswick**  
Slim Fit Suit  
by Allure Men  
page 26



**252-Tan Havana**  
Modern Fit Suit  
by Lord West  
page 41



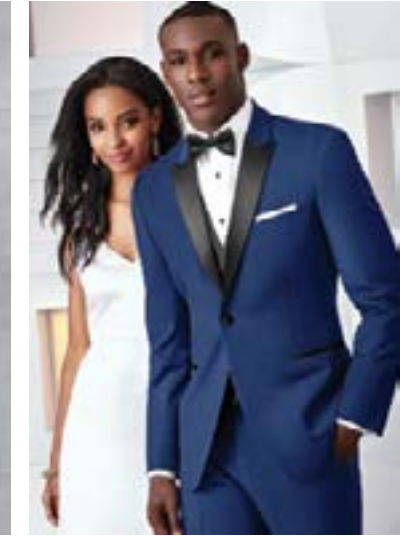
**311-Navy Performance Stretch**  
Slim Fit Tuxedo  
by Michael Kors  
page 20



**222-Hunter Green Luka**  
Slim Fit Suit  
by Ike Behar  
page 27



**201-Burgundy Empire**  
Slim Fit Tuxedo  
by Kenneth Cole  
page 33



**211-Cobalt Blue Tribeca**  
Slim Fit Tuxedo  
by Ike Behar  
page 34



**172-White/Silver Aries Paisley**  
Slim Fit Tuxedo  
by Mark of Distinction  
page 40



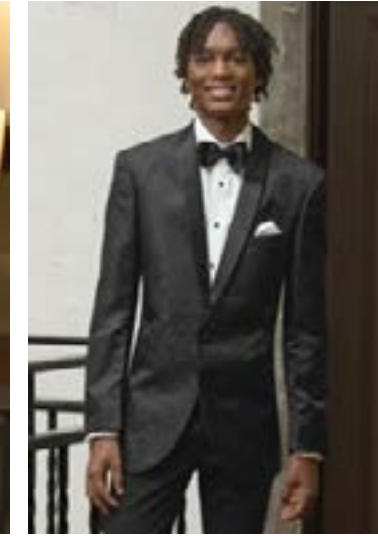
**712-White Troy**  
Modern Fit Tuxedo  
by Stephen Geoffrey  
page 45



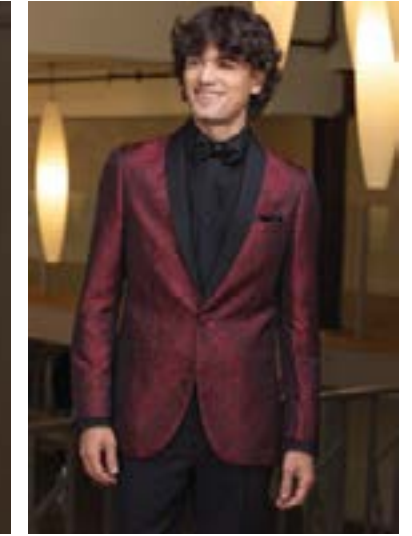
**751-Waverly**  
Slim Fit Tuxedo  
by Ike Behar  
page 46



**192-Granite Aries Paisley**  
Slim Fit Tuxedo  
by Mark of Distinction  
page 36



**182-Black Aries Paisley**  
Slim Fit Tuxedo  
by Mark of Distinction  
page 37



**122-Apple Red Aries Paisley**  
Slim Fit Tuxedo  
by Mark of Distinction  
page 38



**701-White Classic Shawl**  
Modern Fit Tuxedo  
by Stephen Geoffrey  
page 50



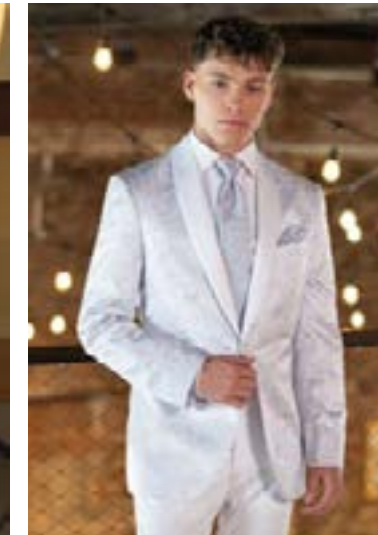
**601-Ivory Classic Shawl**  
Modern Fit Tuxedo  
by Stephen Geoffrey  
page 47



**602-Ivory Troy**  
Modern Fit Tuxedo  
by Stephen Geoffrey  
page 48



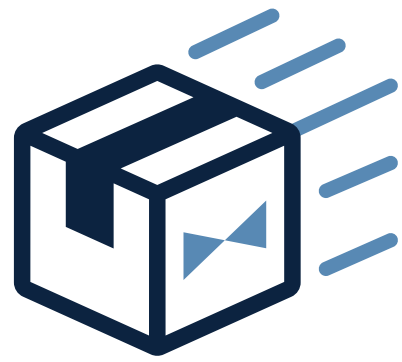
**132-Cobalt Aries Paisley**  
Slim Fit Tuxedo  
by Mark of Distinction  
page 39



**172-White/Silver Aries Paisley**  
Slim Fit Tuxedo  
by Mark of Distinction  
page 40



**751-Waverly**  
Slim Fit Tuxedo  
by Ike Behar  
page 46



# DIRECT DELIVERY

Home, Office, Destination...  
We'll Deliver There!

1 Way Shipping

\$15

Ship Directly to You.  
Return to the Store.

2 Way Shipping

\$30

Ship Directly to You.  
Ship Back to JFW.



RENT  
OR  
BUY

To BUY see page 6 in the  
JFW For Purchase Catalog

AVAILABLE WITH  
MODERN OR  
SLIM FIT PANTS



## MICHAEL KORS

### Legacy Performance Stretch Tuxedo Style 921

**S** **SLIM FIT**  
Contemporary styling  
with a slimming  
appearance.

Size Scale: A2 - see page 57

Men's coat sizes: 34-74

Boys' coat sizes: 3-18

921 pant sizes: 18-71

#### Features:

- ▶ Tailored to fit all body types
- ▶ CoolMax® performance stretch fabric
- ▶ Satin notch lapel, side-vented, 30 1/2" length
- ▶ Shown with slim fit pants with belt loops and buttons to accommodate suspenders



#### Fabric Content:

CoolMax®/  
Sorona®/Wool

#### To order ensemble as shown:

Coat	921
Slim Fit Pants	921
Shirt (upcharge)	96W
Tie	BSAT
Fullback Vest	F921
Jewelry	BLACK
Formal Shoes (upcharge)	BXS
Pocket Square (purchase only)	PWWH

#### Black Pant Options:

Slim Fit Pants	921
Modern Fit Pants	920

DIAMOND COLLECTION



## Ring Bearer SAVINGS

ALL STYLES are specially  
priced for your little guy.

#### To qualify for the Ring Bearer Special Price:

- ▶ The Ring Bearer must be accompanied by the groom's tuxedo or suit rental and five fully paid rentals in the wedding party.
- ▶ Ring Bearer's tuxedo or suit may not exceed size 16.

All Tuxedos and Suits  
are specially priced  
for the Ring Bearer at:

\$120

Any coat, any pant, basic shirt and premium vest included; shoes and pocket squares are additional.



SCAN ME  
for additional images

# MICHAEL KORS

## Black Performance Stretch Wedding Suit Style 421



**SLIM FIT**  
Contemporary styling with a slimming appearance.

**Size Scale:** A2 - see page 57

**Men's coat sizes:** 34-74

**Boys' coat sizes:** 3-18

**921 pant sizes:** 18-71

### Features:

- ▶ Tailored to fit all body types
- ▶ CoolMax® performance stretch fabric
- ▶ Self-framed notch lapel, side-vented, 29½" length
- ▶ Shown with slim fit pants with belt loops and buttons to accommodate suspenders



### Fabric Content:

CoolMax®/  
Sorona®/Wool

### To order ensemble as shown:

Coat	<b>421</b>
Slim Fit Pants	<b>921</b>
Shirt (upcharge)	<b>96W</b>
Tie	<b>WXRW</b>
Fullback Vest	<b>F921</b>
Jewelry	<b>BLACK</b>
Formal Shoes (upcharge)	<b>BXS</b>
Pocket Square (purchase only)	<b>PWRW</b>
Belt (purchase only)	<b>NBLT</b>

### Black Pant Options:

Slim Fit Pants	<b>921</b>
Modern Fit Pants	<b>920</b>



**SCAN ME**  
for additional images



To BUY see page 9 in the JFW For Purchase Catalog

AVAILABLE WITH  
MODERN OR  
SLIM FIT PANTS



To BUY see page 7 in the JFW For Purchase Catalog

AVAILABLE WITH  
MODERN OR  
SLIM FIT PANTS



# MICHAEL KORS

## Tan Performance Stretch Wedding Suit Style 272



**SLIM FIT**  
Contemporary styling with a slimming appearance.

**Size Scale:** A2 - see page 57

**Men's coat sizes:** 34-74

**Boys' coat sizes:** 3-18

**272 pant sizes:** 18-71

### Features:

- ▶ Tailored to fit all body types
- ▶ CoolMax® performance stretch fabric
- ▶ Self-framed notch lapel, side-vented, 29½" length
- ▶ Shown with slim fit pants with belt loops and buttons to accommodate suspenders



### Fabric Content:

CoolMax®/  
Sorona®/Wool

### To order ensemble as shown:

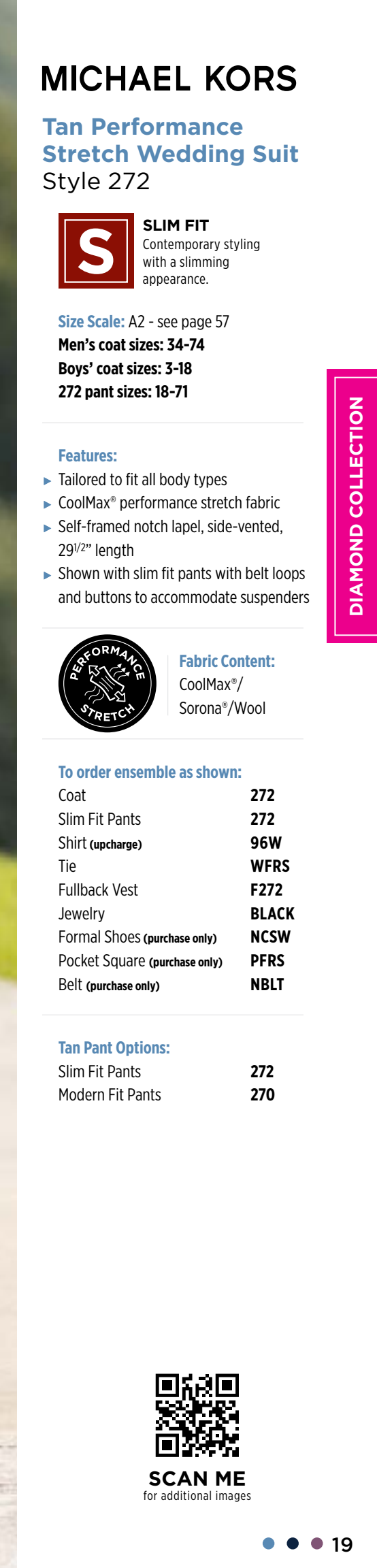
Coat	<b>272</b>
Slim Fit Pants	<b>272</b>
Shirt (upcharge)	<b>96W</b>
Tie	<b>WFRS</b>
Fullback Vest	<b>F272</b>
Jewelry	<b>BLACK</b>
Formal Shoes (purchase only)	<b>NCSW</b>
Pocket Square (purchase only)	<b>PFRS</b>
Belt (purchase only)	<b>NBLT</b>

### Tan Pant Options:

Slim Fit Pants	<b>272</b>
Modern Fit Pants	<b>270</b>



**SCAN ME**  
for additional images



DIAMOND COLLECTION

DIAMOND COLLECTION

# MICHAEL KORS

## Navy Performance Stretch Tuxedo Style 311



**SLIM FIT**  
Contemporary styling with a slimming appearance.

**Size Scale:** A2 - see page 57

**Men's coat sizes:** 34-74

**Boys' coat sizes:** 3-18

**311 pant sizes:** 18-71

### Features:

- ▶ Tailored to fit all body types
- ▶ CoolMax® performance stretch fabric
- ▶ Black satin peak lapel, side-vented, 29 1/2" length
- ▶ Black satin double besom pockets and button
- ▶ Shown with slim fit pants with belt loops and buttons to accommodate suspenders



### Fabric Content:

CoolMax®/  
Sorona®/Wool

### To order ensemble as shown:

Coat	<b>311</b>
Slim Fit Pants	<b>311</b>
Shirt (upcharge)	<b>96W</b>
Tie	<b>BTDS</b>
Fullback Vest	<b>F311</b>
Jewelry	<b>BLACK</b>
Formal Shoes (purchase only)	<b>NBNL</b>
Pocket Square (purchase only)	<b>PWWH</b>
Belt (purchase only)	<b>NLGB</b>

### Navy Pant Option:

Slim Fit Pants **311**

### Black Pant Options:

Slim Fit Pants **921**  
Modern Fit Pants **920**



**SCAN ME**  
for additional images



To BUY see page 8 in the  
JFW For Purchase Catalog

AVAILABLE WITH  
MODERN OR  
SLIM FIT PANTS



# MICHAEL KORS

## Milan Performance Stretch Tuxedo Style 931



**SLIM FIT**  
Contemporary styling with a slimming appearance.

**Size Scale:** A2 - see page 57

**Men's coat sizes:** 34-74

**Boys' coat sizes:** 3-18

**921 pant sizes:** 18-71

### Features:

- ▶ Tailored to fit all body types
- ▶ CoolMax® performance stretch fabric
- ▶ Satin peak lapel, side-vented, 29 3/4" length
- ▶ Shown with slim fit pants with belt loops and buttons to accommodate suspenders



### Fabric Content:

CoolMax®/  
Sorona®/Wool

### To order ensemble as shown:

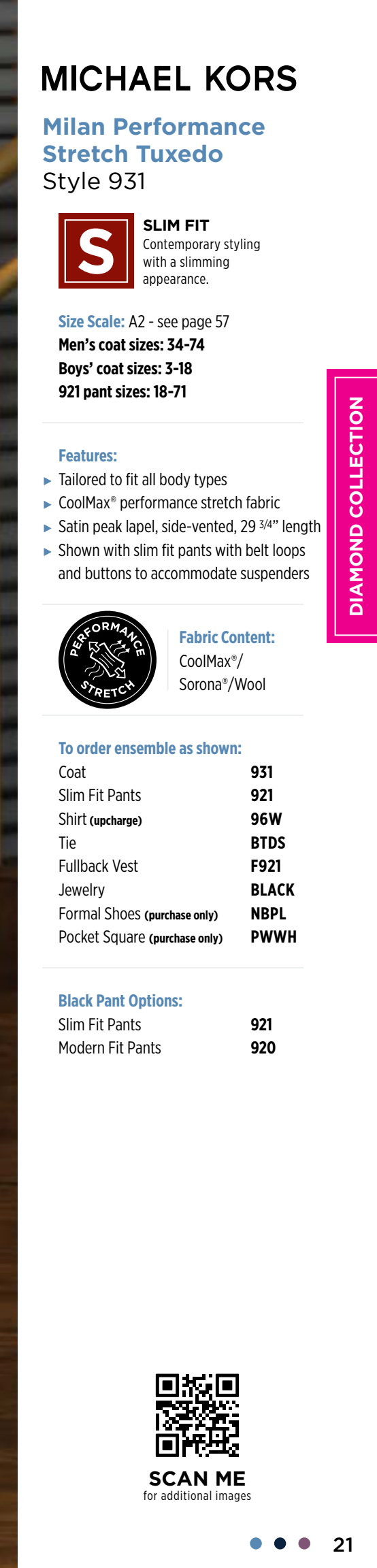
Coat	<b>931</b>
Slim Fit Pants	<b>921</b>
Shirt (upcharge)	<b>96W</b>
Tie	<b>BTDS</b>
Fullback Vest	<b>F921</b>
Jewelry	<b>BLACK</b>
Formal Shoes (purchase only)	<b>NBPL</b>
Pocket Square (purchase only)	<b>PWWH</b>

### Black Pant Options:

Slim Fit Pants **921**  
Modern Fit Pants **920**



**SCAN ME**  
for additional images



DIAMOND COLLECTION

# MICHAEL KORS

## Force Performance Stretch Tuxedo Style 981



**SLIM FIT**  
Contemporary styling with a slimming appearance.

**Size Scale:** A2 - see page 57  
**Men's coat sizes:** 34-74  
**Boys' coat sizes:** 3-18  
**921 pant sizes:** 18-71

### Features:

- ▶ Tailored to fit all body types
- ▶ CoolMax® performance stretch fabric
- ▶ Grosgrain notch lapel, side-vented, 29½" length
- ▶ Grosgrain trimmed pockets and covered buttons
- ▶ Shown with slim fit pants with belt loops and buttons to accommodate suspenders



**Fabric Content:**  
CoolMax®/  
Sorona®/Wool

### To order ensemble as shown:

Coat	<b>981</b>
Slim Fit Pants	<b>921</b>
Shirt (purchase only)	<b>N91W</b>
Tie	<b>B981</b>
Fullback Vest	<b>F921</b>
Jewelry	<b>BLACK</b>
Formal Shoes (purchase only)	<b>NBNL</b>
Pocket Square (purchase only)	<b>PWWH</b>
Belt (purchase only)	<b>NILB</b>

### Black Pant Options:

Slim Fit Pants	<b>921</b>
Modern Fit Pants	<b>920</b>



**SCAN ME**  
for additional images

AVAILABLE WITH  
MODERN OR  
SLIM FIT PANTS



To BUY see page 11 in the  
JFW For Purchase Catalog



# MICHAEL KORS

## Blue Performance Stretch Wedding Suit Style 302



**SLIM FIT**  
Contemporary styling with a slimming appearance.

**Size Scale:** A2 - see page 57  
**Men's coat sizes:** 34-74  
**Boys' coat sizes:** 3-18  
**302 pant sizes:** 18-71

### Features:

- ▶ Tailored to fit all body types
- ▶ CoolMax® performance stretch fabric
- ▶ Self-framed notch lapel, side-vented, 30½" length
- ▶ Shown with slim fit pants with belt loops and buttons to accommodate suspenders



**Fabric Content:**  
CoolMax®/  
Sorona®/Wool

### To order ensemble as shown:

Coat	<b>302</b>
Slim Fit Pants	<b>302</b>
Shirt (upcharge)	<b>96W</b>
Tie	<b>WNMB</b>
Fullback Vest	<b>FNMB</b>
Jewelry	<b>BLACK</b>
Formal Shoes (upcharge)	<b>COP</b>
Pocket Square (purchase only)	<b>PNMB</b>
Belt (purchase only)	<b>NBLT</b>

### Blue Pant Option:

Slim Fit Pants	<b>302</b>
----------------	------------



**SCAN ME**  
for additional images

DIAMOND COLLECTION

DIAMOND COLLECTION

# MICHAEL KORS

## Medium Grey Performance Stretch Wedding Suit Style 350

**S** **SLIM FIT**  
Contemporary styling with a slimming appearance.

**Size Scale:** A2 - see page 57  
**Men's coat sizes:** 34-74  
**Boys' coat sizes:** 3-18  
**350 pant sizes:** 18-71

### Features:

- ▶ Tailored to fit all body types
- ▶ CoolMax® performance stretch fabric
- ▶ Self-framed notch lapel, side-vented, 29½" length
- ▶ Shown with slim fit pants with belt loops and buttons to accommodate suspenders



**Fabric Content:**  
CoolMax®/  
Sorona®/Wool

### To order ensemble as shown:

Coat	<b>350</b>
Slim Fit Pants	<b>350</b>
Shirt (upcharge)	<b>96W</b>
Tie	<b>BNST</b>
Fullback Vest	<b>FNST</b>
Jewelry	<b>BLACK</b>
Formal Shoes (upcharge)	<b>COP</b>
Pocket Square (purchase only)	<b>PNST</b>
Belt (purchase only)	<b>NBLT</b>

### Medium Grey Pant Option:

Slim Fit Pants	<b>350</b>
----------------	------------



**SCAN ME**  
for additional images



To BUY see page 12 in the JFW For Purchase Catalog



To BUY see page 14 in the JFW For Purchase Catalog



# ALLURE MEN

## Heather Grey Clayton Suit Style 262

**S** **SLIM FIT**  
Contemporary styling with a slimming appearance.

**Size Scale:** A2 - see page 57  
**Men's coat sizes:** 34-74  
**Boys' coat sizes:** 3-18  
**262 pant sizes:** 18-71

### Features:

- ▶ Tailored to fit all body types
- ▶ Self-framed notch lapel, side-vented, 29½" length
- ▶ Shown with slim fit pants with belt loops and buttons to accommodate suspenders

**Fabric Content:**  
Super 130's Wool

### To order ensemble as shown:

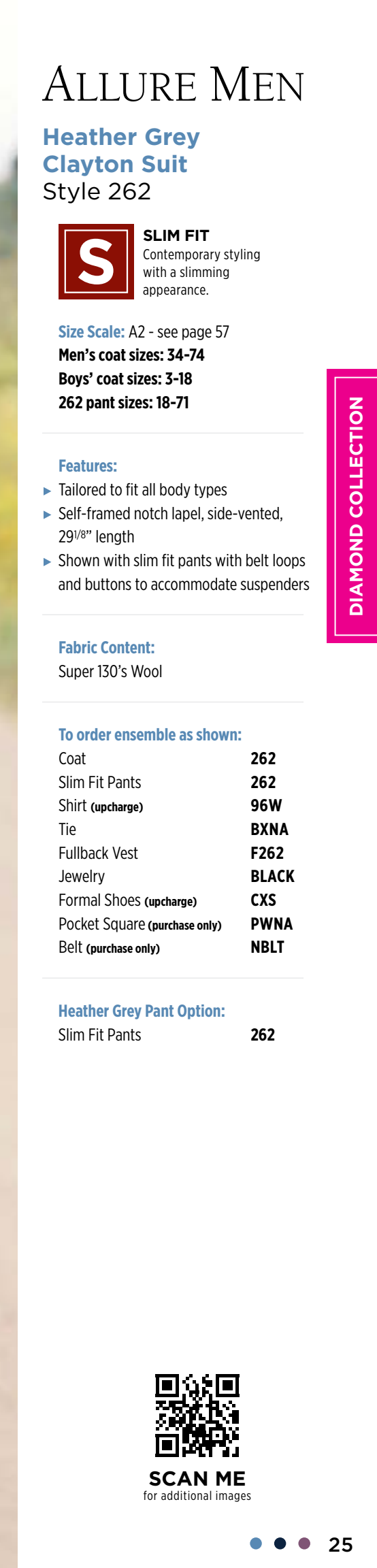
Coat	<b>262</b>
Slim Fit Pants	<b>262</b>
Shirt (upcharge)	<b>96W</b>
Tie	<b>BXNA</b>
Fullback Vest	<b>F262</b>
Jewelry	<b>BLACK</b>
Formal Shoes (upcharge)	<b>CXS</b>
Pocket Square (purchase only)	<b>PWNA</b>
Belt (purchase only)	<b>NBLT</b>

### Heather Grey Pant Option:

Slim Fit Pants	<b>262</b>
----------------	------------



**SCAN ME**  
for additional images



DIAMOND COLLECTION

# ALLURE MEN

## Sand Brunswick Suit Style 202

**S** **SLIM FIT**  
Contemporary styling  
with a slimming  
appearance.

**Size Scale:** B - see page 57  
**Men's coat sizes:** 34-66  
**Boys' coat sizes:** 3-18  
**202 pant sizes:** 18-65

### Features:

- ▶ Tailored to fit all body types
- ▶ Self-framed notch lapel, side-vented, 30" length
- ▶ Shown with slim fit pants with belt loops and buttons to accommodate suspenders

### Fabric Content:

60/40 Super 130's Wool Blend

### To order ensemble as shown:

Coat	<b>202</b>
Slim Fit Pants	<b>202</b>
Shirt (upcharge)	<b>96W</b>
Tie	<b>WFWI</b>
Fullback Vest	<b>F202</b>
Jewelry	<b>BLACK</b>
Formal Shoes (upcharge)	<b>COP</b>
Pocket Square (purchase only)	<b>PFWI</b>
Belt (purchase only)	<b>NBLT</b>

### Sand Pant Option:

Slim Fit Pants	<b>202</b>
----------------	------------



**SCAN ME**  
for additional images



# I K E EVENING

BY KE BEHAR

## Hunter Green Luka Suit Style 222

**S** **SLIM FIT**  
Contemporary styling  
with a slimming  
appearance.

**Size Scale:** A2 - see page 57  
**Men's coat sizes:** 34-74  
**Boys' coat sizes:** 3-18  
**222 pant sizes:** 18-71

### Features:

- ▶ Tailored to fit all body types
- ▶ Pick-stitched, self notch lapel, side-vented, flap pockets, 29<sup>3/4</sup>" length
- ▶ Shown with slim fit pants with belt loops

### Fabric Content:

100% Wool

### To order ensemble as shown:

Coat	<b>222</b>
Slim Fit Pants	<b>222</b>
Shirt (upcharge)	<b>96W</b>
Tie	<b>BLMU</b>
Fullback Vest	<b>F222</b>
Jewelry	<b>BLACK</b>
Formal Shoes (upcharge)	<b>COP</b>
Pocket Square (purchase only)	<b>PLMU</b>
Belt (purchase only)	<b>NILT</b>

### Hunter Green Pant Option:

Slim Fit Pants	<b>222</b>
----------------	------------



**SCAN ME**  
for additional images



DIAMOND COLLECTION

DIAMOND COLLECTION

# MICHAEL KORS

## Navy Sterling Wedding Suit Style 371



**SLIM FIT**  
Contemporary styling  
with a slimming  
appearance.

**Size Scale:** E - see page 57

**Men's coat sizes:** 34-44

**Boys' coat sizes:** N/A

**371 pant sizes:** 27-44

### Features:

- ▶ Self-framed notch lapel, side-vented, 30<sup>1</sup>/<sub>2</sub>" length
- ▶ Shown with slim fit pants with belt loops and buttons to accommodate suspenders

### Fabric Content:

Venetian Super 130's Wool

### Companion Coat:

Style 372 - Navy Sterling Modern Fit  
Wedding Suit; see page 29

### To order ensemble as shown:

Coat	<b>371</b>
Slim Fit Pants	<b>371</b>
Shirt (upcharge)	<b>96W</b>
Tie	<b>BNNA</b>
Fullback Vest	<b>F372</b>
Jewelry	<b>BLACK</b>
Formal Shoes (upcharge)	<b>CXS</b>
Pocket Square (purchase only)	<b>PWWH</b>
Belt (purchase only)	<b>NBLT</b>

### Navy Pant Options:

Slim Fit Pants	<b>371</b>
Modern Fit Pants	<b>372</b>



**SCAN ME**  
for additional images



AVAILABLE IN  
TWO FITS:  
SLIM FIT  
Shown  
MODERN FIT  
See page 29



To BUY see page 10 in the  
JFW For Purchase Catalog

AVAILABLE IN  
TWO FITS:  
MODERN FIT  
Shown  
SLIM FIT  
See page 28



# MICHAEL KORS

## Navy Sterling Wedding Suit Style 372



**MODERN FIT**  
Fashion-forward  
styling with a flattering  
appearance.

**Size Scale:** B - see page 57

**Men's coat sizes:** 34-66

**Boys' coat sizes:** 3-18

**372 pant sizes:** 18-65

### Features:

- ▶ Self-framed notch lapel, side-vented, 30<sup>1</sup>/<sub>2</sub>" length
- ▶ Shown with modern fit pants with belt loops and buttons to accommodate suspenders

### Fabric Content:

Venetian Super 130's Wool

### Companion Coat:

Style 371 - Navy Sterling Slim Fit  
Wedding Suit; see page 28

### To order ensemble as shown:

Coat	<b>372</b>
Modern Fit Pants	<b>372</b>
Shirt (upcharge)	<b>96W</b>
Tie	<b>WXFB</b>
Fullback Vest	<b>F372</b>
Jewelry	<b>BLACK</b>
Formal Shoes (purchase only)	<b>NMCS</b>
Pocket Square (purchase only)	<b>PWFB</b>
Belt (purchase only)	<b>NLGT</b>

### Navy Pant Options:

Slim Fit Pants	<b>371</b>
Modern Fit Pants	<b>372</b>



**SCAN ME**  
for additional images

DIAMOND COLLECTION

DIAMOND COLLECTION

# MICHAEL KORS

## Steel Grey Sterling Wedding Suit Style 391



**SLIM FIT**  
Contemporary styling  
with a slimming  
appearance.

**Size Scale:** E - see page 57

**Men's coat sizes:** 34-44

**Boys' coat sizes:** N/A

**391 pant sizes:** 27-44

### Features:

- ▶ Self-framed notch lapel, side-vented, 30<sup>1</sup>/<sub>2</sub>" length
- ▶ Shown with slim fit pants with belt loops and buttons to accommodate suspenders

### Fabric Content:

Venetian Super 130's Wool

### Companion Coat:

Style 392 - Steel Grey Sterling Modern Fit Wedding Suit; see page 31

### To order ensemble as shown:

Coat	<b>391</b>
Slim Fit Pants	<b>391</b>
Shirt (upcharge)	<b>96W</b>
Tie	<b>WNWI</b>
Fullback Vest	<b>F392</b>
Jewelry	<b>BLACK</b>
Formal Shoes (upcharge)	<b>CXS</b>
Pocket Square (purchase only)	<b>PNWI</b>
Belt (purchase only)	<b>NBLT</b>

### Steel Grey Pant Options:

Slim Fit Pants	<b>391</b>
Modern Fit Pants	<b>392</b>



**SCAN ME**  
for additional images

AVAILABLE IN  
TWO FITS:

**SLIM FIT**  
Shown

**MODERN FIT**  
See page 31



To BUY see page 13 in the  
JFW For Purchase Catalog

# MICHAEL KORS

## Steel Grey Sterling Wedding Suit Style 392



**MODERN FIT**  
Fashion-forward  
styling with a flattering  
appearance.

**Size Scale:** B - see page 57

**Men's coat sizes:** 34-66

**Boys' coat sizes:** 3-18

**392 pant sizes:** 18-65

### Features:

- ▶ Self-framed notch lapel, side-vented, 30<sup>1</sup>/<sub>2</sub>" length
- ▶ Shown with modern fit pants with belt loops and buttons to accommodate suspenders

### Fabric Content:

Venetian Super 130's Wool

### Companion Coat:

Style 391 - Steel Grey Sterling Slim Fit Wedding Suit; see page 30

### To order ensemble as shown:

Coat	<b>392</b>
Modern Fit Pants	<b>392</b>
Shirt (upcharge)	<b>96W</b>
Tie	<b>WFDL</b>
Fullback Vest	<b>F392</b>
Jewelry	<b>BLACK</b>
Formal Shoes (purchase only)	<b>NMCS</b>
Pocket Square (purchase only)	<b>PFDL</b>
Belt (purchase only)	<b>NLGT</b>

### Steel Grey Pant Options:

Slim Fit Pants	<b>391</b>
Modern Fit Pants	<b>392</b>



**SCAN ME**  
for additional images

AVAILABLE IN  
TWO FITS:

**MODERN FIT**  
Shown

**SLIM FIT**  
See page 30



DIAMOND COLLECTION

DIAMOND COLLECTION

# MICHAEL KORS

## Berkeley Tuxedo Style 990



**MODERN FIT**  
Fashion-forward styling with a flattering appearance.

**Size Scale:** B - see page 57  
**Men's coat sizes:** 34-66  
**Boys' coat sizes:** 3-18  
**990 pant sizes:** 18-65

### Features:

- ▶ Grosgrain notch lapel, side-vented, 30 1/2" length
- ▶ Grosgrain trimmed pockets
- ▶ Shown with modern fit pants with grosgrain piping on the leg

### Fabric Content:

Venetian Super 130's Wool

### To order ensemble as shown:

Coat	<b>990</b>
Modern Fit Pants	<b>990</b>
Shirt (upcharge)	<b>96W</b>
Tie	<b>BXBL</b>
Fullback Vest	<b>F900</b>
Jewelry	<b>BLACK</b>
Formal Shoes (upcharge)	<b>BDS</b>
Pocket Square (purchase only)	<b>PWWH</b>

### Black Pant Options:

Slim Fit Pants	<b>991</b>
Modern Fit Pants	<b>990</b>



**SCAN ME**  
for additional images



AVAILABLE WITH  
MODERN OR  
SLIM FIT PANTS

# KENNETH COLE

## Burgundy Empire Tuxedo Style 201



**SLIM FIT**  
Contemporary styling with a slimming appearance.

**Size Scale:** D - see page 57  
**Men's coat sizes:** 34-60  
**Boys' coat sizes:** 3-18  
**991 pant sizes:** 18-59

### Features:

- ▶ Tailored to fit all body types
- ▶ Black satin peak lapel, side-vented, 30 1/2" length
- ▶ Black satin double besom pockets
- ▶ Shown with black slim fit pants with no stripe

### Fabric Content:

Super 120's Wool

### To order ensemble as shown:

Coat	<b>201</b>
Slim Fit Pants	<b>991</b>
Shirt (upcharge)	<b>96W</b>
Tie	<b>BSAT</b>
Jewelry	<b>BLACK</b>
Formal Shoes (upcharge)	<b>BDS</b>
Pocket Square (purchase only)	<b>PWWH</b>

### Black Pant Options:

Slim Fit Pants	<b>991</b>
Modern Fit Pants	<b>990</b>



**SCAN ME**  
for additional images

DIAMOND COLLECTION

**Cobalt Blue  
Tribeca Tuxedo**  
Style 211

**S** **SLIM FIT**  
Contemporary styling  
with a slimming  
appearance.

**Size Scale:** D - see page 57  
**Men's coat sizes:** 34-60  
**Boys' coat sizes:** 3-18  
**211 pant sizes:** 18-59

- Features:**
- ▶ Tailored to fit all body types
  - ▶ Black satin peak lapel, side-vented, 30" length
  - ▶ Black satin double besom pockets
  - ▶ Shown with slim fit pants with no stripe

**Fabric Content:**  
Super 120's Wool

**To order ensemble as shown:**

Coat	<b>211</b>
Slim Fit Pants	<b>211</b>
Shirt (upcharge)	<b>96W</b>
Tie	<b>BXBL</b>
Fullback Vest	<b>EXBL</b>
Jewelry	<b>BLACK</b>
Formal Shoes (upcharge)	<b>BDS</b>
Pocket Square (purchase only)	<b>PWWH</b>

**Cobalt Blue Pant Option:**

Slim Fit Pants **211**

**Black Pant Options:**

Slim Fit Pants **991**  
Modern Fit Pants **990**



**SCAN ME**  
for additional images



**Indigo Blue  
Lane Tuxedo**  
Style 221

**S** **SLIM FIT**  
Contemporary styling  
with a slimming  
appearance.

**Size Scale:** B - see page 57  
**Men's coat sizes:** 34-66  
**Boys' coat sizes:** 3-18  
**221 pant sizes:** 18-65

- Features:**
- ▶ Tailored to fit all body types
  - ▶ Satin-edged peak lapel, side-vented, 29 1/4" length
  - ▶ Shown with slim fit pants with no stripe

**Fabric Content:**  
Super 120's Wool

**To order ensemble as shown:**

Coat	<b>221</b>
Slim Fit Pants	<b>221</b>
Shirt (upcharge)	<b>96W</b>
Tie	<b>BXCP</b>
Fullback Vest	<b>EXCP</b>
Jewelry	<b>BLACK</b>
Formal Shoes (upcharge)	<b>CXS</b>
Pocket Square (purchase only)	<b>PWCP</b>

**Indigo Blue Pant Option:**

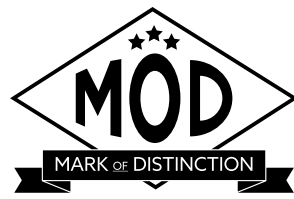
Slim Fit Pants **221**



**SCAN ME**  
for additional images

DIAMOND COLLECTION

DIAMOND COLLECTION



### Granite Aries Paisley Tuxedo Style 192

**S** **SLIM FIT**  
Contemporary styling with a slimming appearance.

**Size Scale:** G - see page 57  
**Men's coat sizes:** 34-66 (even sizes only)  
**Boys' coat sizes:** 3-18 (even sizes only)  
**921 pant sizes:** 18-71

- Features:**
- ▶ Black satin shawl lapel, side-vented, 30 1/2" length
  - ▶ Fabric covered buttons
  - ▶ Shown with slim fit pants with belt loops and buttons to accommodate suspenders

**Fabric Content:**  
100% Polyester

**To order ensemble as shown:**

Coat	<b>192</b>
Slim Fit Pants	<b>921</b>
Shirt (upcharge)	<b>96W</b>
Tie	<b>BSAT</b>
Jewelry	<b>BLACK</b>
Formal Shoes (purchase only)	<b>NBPL</b>
Pocket Square (purchase only)	<b>PWWH</b>

**Black Pant Options:**

Euro Slim Pants (purchase only)	<b>N11P</b>
Slim Fit Pants	<b>921</b>
Modern Fit Pants	<b>920</b>



**SCAN ME**  
for additional images

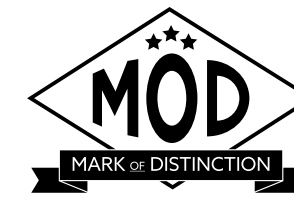


**RENT OR BUY**

To BUY see page 33 in the JFW For Purchase Catalog

**RENT OR BUY**

To BUY see page 32 in the JFW For Purchase Catalog



### Black Aries Paisley Tuxedo Style 182

**S** **SLIM FIT**  
Contemporary styling with a slimming appearance.

**Size Scale:** G - see page 57  
**Men's coat sizes:** 34-66 (even sizes only)  
**Boys' coat sizes:** 3-18 (even sizes only)  
**N11P pant sizes:** 26-44 (even sizes only)

- Features:**
- ▶ Black satin shawl lapel, side-vented, 30 1/2" length
  - ▶ Fabric covered buttons
  - ▶ Shown with Black Euro Slim Stretch Suit Pants for purchase

**Fabric Content:**  
100% Polyester

**To order ensemble as shown:**

Coat	<b>182</b>
Euro Slim Pants (purchase only)	<b>N11P</b>
Shirt (upcharge)	<b>96W</b>
Tie	<b>BSAT</b>
Jewelry	<b>BLACK</b>
Formal Shoes (purchase only)	<b>NBSKS</b>
Pocket Square (purchase only)	<b>PWWH</b>

**Black Pant Options:**

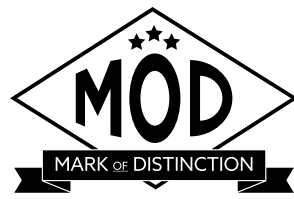
Euro Slim Pants (purchase only)	<b>N11P</b>
Slim Fit Pants	<b>921</b>
Modern Fit Pants	<b>920</b>



**SCAN ME**  
for additional images



DIAMOND COLLECTION



**Apple Red Aries Paisley Tuxedo**  
Style 122

**S** **SLIM FIT**  
Contemporary styling with a slimming appearance.

**Size Scale:** F - see page 57  
**Men's coat sizes:** 34-50 (even sizes only)  
**Boys' coat sizes:** 14-18 (even sizes only)  
**921 pant sizes:** 18-71

**Features:**

- ▶ **Limited size scale**
- ▶ Black satin shawl lapel, side-vented, 30 1/2" length
- ▶ Fabric covered buttons
- ▶ Shown with slim fit pants with belt loops and buttons to accommodate suspenders

**Fabric Content:**  
100% Polyester

**To order ensemble as shown:**

Coat	<b>122</b>
Slim Fit Pants	<b>921</b>
Shirt (upcharge)	<b>96B</b>
Tie	<b>BSAT</b>
Jewelry	<b>BLACK</b>
Formal Shoes (upcharge)	<b>BDS</b>
Pocket Square (purchase only)	<b>PWBL</b>

**Black Pant Options:**

Euro Slim Pants (purchase only)	<b>N11P</b>
Slim Fit Pants	<b>921</b>
Modern Fit Pants	<b>920</b>

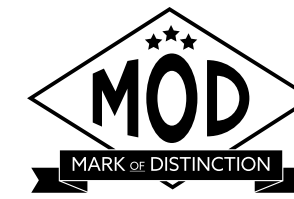


**SCAN ME**  
for additional images

**LIMITED  
SIZE SCALE**



**LIMITED  
SIZE SCALE**



**Cobalt Aries Paisley Tuxedo**  
Style 132

**S** **SLIM FIT**  
Contemporary styling with a slimming appearance.

**Size Scale:** F - see page 57  
**Men's coat sizes:** 34-50 (even sizes only)  
**Boys' coat sizes:** 14-18 (even sizes only)  
**921 pant sizes:** 18-71

**Features:**

- ▶ **Limited size scale**
- ▶ Black satin shawl lapel, side-vented, 30 1/2" length
- ▶ Fabric covered buttons
- ▶ Shown with slim fit pants with belt loops and buttons to accommodate suspenders

**Fabric Content:**  
100% Polyester

**To order ensemble as shown:**

Coat	<b>132</b>
Slim Fit Pants	<b>921</b>
Shirt (upcharge)	<b>96B</b>
Tie	<b>BSAT</b>
Jewelry	<b>BLACK</b>
Formal Shoes (purchase only)	<b>NBSKS</b>
Pocket Square (purchase only)	<b>PWBL</b>

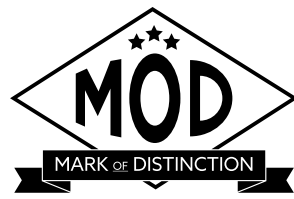
**Black Pant Options:**

Euro Slim Pants (purchase only)	<b>N11P</b>
Slim Fit Pants	<b>921</b>
Modern Fit Pants	<b>920</b>



**SCAN ME**  
for additional images

DIAMOND COLLECTION



### White/Silver Aries Paisley Tuxedo Style 172

**S** **SLIM FIT**  
Contemporary styling with a slimming appearance.

**Size Scale:** F - see page 57  
**Men's coat sizes:** 34-50 (even sizes only)  
**Boys' coat sizes:** 14-18 (even sizes only)  
**N17P pant sizes:** 26-44 (even sizes only)

**Features:**

- ▶ **Limited size scale**
- ▶ White satin shawl lapel, side-vented, 30 1/2" length
- ▶ Fabric covered buttons
- ▶ Shown with White Euro Slim Stretch Suit Pants for purchase

**Fabric Content:**  
100% Polyester

**To order ensemble as shown:**

Coat	<b>172</b>
Euro Slim Pants (purchase only)	<b>N17P</b>
Shirt (upcharge)	<b>96W</b>
Tie	<b>WFPT</b>
Jewelry	<b>WHITE</b>
Formal Shoes (purchase only)	<b>NCSW</b>
Pocket Square (purchase only)	<b>PFPT</b>

**White Pant Options:**

Euro Slim Pants (purchase only)	<b>N17P</b>
Modern Fit Pants	<b>750</b>

**Black Pant Options:**

Euro Slim Pants (purchase only)	<b>N11P</b>
Slim Fit Pants	<b>921</b>
Modern Fit Pants	<b>920</b>



**SCAN ME**  
for additional images



**RENT  
OR  
BUY**

To BUY see page 31 in the JFW For Purchase Catalog

**LIMITED  
SIZE SCALE**

### Tan Havana Suit Style 252

**M** **MODERN FIT**  
Fashion-forward styling with a flattering appearance.

**Size Scale:** B2 - see page 57  
**Men's coat sizes:** 34-66  
**Boys' coat sizes:** 3-18  
**252 pant sizes:** 18-65

**Features:**

- ▶ Self notch lapel, bone buttons, side-vented, 30" length
- ▶ Shown with modern fit pants with no stripe

**Fabric Content:**

Ultra Fine Poly / Wool Blend

**To order ensemble as shown:**

Coat	<b>252</b>
Modern Fit Pants	<b>252</b>
Shirt (upcharge)	<b>96W</b>
Tie	<b>WRCP</b>
Fullback Vest	<b>F252</b>
Jewelry	<b>BLACK</b>
Formal Shoes (upcharge)	<b>CXS</b>
Pocket Square (purchase only)	<b>PKWH</b>

**Tan Pant Options:**

Slim Fit Pants	<b>251</b>
Modern Fit Pants	<b>252</b>



**AVAILABLE WITH  
MODERN OR  
SLIM FIT PANTS**

DIAMOND COLLECTION

PLATINUM COLLECTION



stephengeoffrey

### Emerson Tuxedo Style 852



**MODERN FIT**  
Fashion-forward styling with a flattering appearance.

**Size Scale:** H - see page 57  
**Men's coat sizes:** 34-56  
**Boys' coat sizes:** 14-18  
**850 pant sizes:** 18-71

**Features:**

- ▶ **Limited size scale**
- ▶ Grosgrain notch lapel, non-vented, 3 1/2" length
- ▶ Grosgrain buttons
- ▶ Shown with modern fit pants with a beaded stripe

**Fabric Content:**

100% Tropical Worsted Wool

**To order ensemble as shown:**

Coat	<b>852</b>
Modern Fit Pants	<b>850</b>
Shirt (upcharge)	<b>96W</b>
Tie	<b>WKLA</b>
Fullback Vest	<b>HRLA</b>
Jewelry	<b>BLACK</b>
Formal Shoes (upcharge)	<b>BDS</b>
Pocket Square (purchase only)	<b>PKLA</b>

**Black Pant Option:**

Modern Fit Pants	<b>850</b>
------------------	------------



LIMITED  
SIZE SCALE



stephengeoffrey

### Cyprus Tuxedo Style 822



**MODERN FIT**  
Fashion-forward styling with a flattering appearance.

**Size Scale:** B2 - see page 57  
**Men's coat sizes:** 34-66  
**Boys' coat sizes:** 3-18  
**850 pant sizes:** 18-71

**Features:**

- ▶ Satin shawl lapel, non-vented, 3 1/2" length
- ▶ Shown with modern fit pants with a beaded stripe

**Fabric Content:**

100% Tropical Worsted Wool

**To order ensemble as shown:**

Coat	<b>822</b>
Modern Slim Fit Pants	<b>850</b>
Shirt (upcharge)	<b>96W</b>
Tie	<b>WXRA</b>
Fullback Vest	<b>EXRA</b>
Jewelry	<b>BLACK</b>
Formal Shoes (upcharge)	<b>BDS</b>
Pocket Square (purchase only)	<b>PWRA</b>

**Black Pant Option:**

Modern Fit Pants	<b>850</b>
------------------	------------



PLATINUM COLLECTION

PLATINUM COLLECTION



stephengeoffrey

### Black Troy Tuxedo Style 802



**MODERN FIT**  
Fashion-forward styling with a flattering appearance.

**Size Scale:** H - see page 57  
**Men's coat sizes:** 34-56  
**Boys' coat sizes:** 14-18  
**850 pant sizes:** 18-71

**Features:**

- ▶ **Limited size scale**
- ▶ Satin notch lapel, non-vented, 31½" length
- ▶ Shown with modern fit pants with a beaded stripe

**Fabric Content:**

100% Worsted Wool

**To order ensemble as shown:**

Coat	<b>802</b>
Modern Fit Pants	<b>850</b>
Shirt (upcharge)	<b>96W</b>
Tie	<b>WRCO</b>
Fullback Vest	<b>HRCO</b>
Jewelry	<b>BLACK</b>
Formal Shoes (upcharge)	<b>BDS</b>
Pocket Square (purchase only)	<b>PKCO</b>

**Black Pant Option:**

Modern Fit Pants	<b>850</b>
------------------	------------

LIMITED  
SIZE SCALE



stephengeoffrey

### White Troy Tuxedo Style 712



**MODERN FIT**  
Fashion-forward styling with a flattering appearance.

**Size Scale:** B - see page 57  
**Men's coat sizes:** 34-66  
**Boys' coat sizes:** 3-18  
**750 pant sizes:** 18-65

**Features:**

- ▶ Satin notch lapel, non-vented, 31½" length
- ▶ Shown with modern fit pants with a beaded stripe

**Fabric Content:**

100% Polyester

**To order ensemble as shown:**

Coat	<b>712</b>
Modern Fit Pants	<b>750</b>
Shirt (upcharge)	<b>96W</b>
Tie	<b>BXWH</b>
Fullback Vest	<b>EXWH</b>
Jewelry	<b>WHITE</b>
Formal Shoes (upcharge)	<b>WAS</b>
Pocket Square (purchase only)	<b>PWWH</b>

**White Pant Option:**

Modern Fit Pants	<b>750</b>
------------------	------------



PLATINUM COLLECTION

PLATINUM COLLECTION

**Waverly Tuxedo**  
Style 751

**S** **SLIM FIT**  
Contemporary styling with a slimming appearance.

**Size Scale:** D - see page 57  
**Men's coat sizes:** 34-60  
**Boys' coat sizes:** 3-18  
**991 pant sizes:** 18-59

**Features:**

- ▶ Tailored to fit all body types
- ▶ Self shawl lapel edged in black satin, center-vented, 30" length
- ▶ Shown with black slim fit pants with no stripe

**Fabric Content:**  
100% Polyester

**To order ensemble as shown:**

Coat	<b>751</b>
Slim Fit Pants	<b>991</b>
Shirt (upcharge)	<b>96W</b>
Tie	<b>BXBL</b>
Fullback Vest	<b>EXBL</b>
Jewelry	<b>BLACK</b>
Formal Shoes (upcharge)	<b>BDS</b>
Pocket Square (purchase only)	<b>PWBL</b>

<b>White Pant Option:</b>	
Modern Fit Pants	<b>750</b>
<b>Black Pant Options:</b>	
Slim Fit Pants	<b>991</b>
Modern Fit Pants	<b>850</b>



**RENT OR BUY**

To BUY see page 17 in the JFW For Purchase Catalog



**Ivory Classic Shawl Tuxedo**  
Style 601

**M** **MODERN FIT**  
Fashion-forward styling with a flattering appearance.

**Size Scale:** B - see page 57  
**Men's coat sizes:** 34-66  
**Boys' coat sizes:** 3-18  
**991 pant sizes:** 18-59

**Features:**

- ▶ Self shawl lapel, side-vented, 30 1/2" length
- ▶ Shown with black slim fit pants with no stripe

**Fabric Content:**  
100% Polyester

**To order ensemble as shown:**

Coat	<b>601</b>
Slim Fit Pants	<b>991</b>
Shirt (upcharge)	<b>96W</b>
Tie	<b>BSAT</b>
Sash	<b>CUMB</b>
Jewelry	<b>BLACK</b>
Formal Shoes (upcharge)	<b>BDS</b>
Pocket Square (purchase only)	<b>PWBL</b>

<b>Ivory Pant Option:</b>	
Modern Fit Pants	<b>650</b>
<b>Black Pant Options:</b>	
Slim Fit Pants	<b>991</b>
Modern Fit Pants	<b>850</b>

PLATINUM COLLECTION

PLATINUM COLLECTION



stephengeoffrey

### Ivory Troy Tuxedo Style 602



**MODERN FIT**  
Fashion-forward styling with a flattering appearance.

**Size Scale:** B2 - see page 57

**Men's coat sizes:** 34-66

**Boys' coat sizes:** 3-18

**650 pant sizes:** 18-65

**Features:**

- ▶ Satin notch lapel, non-vented, 3 1/2" length
- ▶ Shown with modern fit pants with a beaded stripe

**Fabric Content:**

100% Polyester

**To order ensemble as shown:**

Coat	<b>602</b>
Modern Fit Pants	<b>650</b>
Shirt (upcharge)	<b>96W</b>
Tie	<b>WRGO</b>
Fullback Vest	<b>HRGO</b>
Jewelry	<b>BLACK</b>
Formal Shoes (upcharge)	<b>COP</b>
Pocket Square (purchase only)	<b>PKGO</b>

**Ivory Pant Option:**

Modern Fit Pants **650**



### Classic Notch Tuxedo Style 820



**TRADITIONAL FIT**  
A classic, fuller cut tuxedo.

**Size Scale:** A - see page 57;  
expanded sizes available

**Men's coat sizes:** 34-74

**Boys' coat sizes:** 2-18

**850 pant sizes:** 18-71

**Features:**

- ▶ Satin notch lapel, non-vented, 3 1/2" length
- ▶ Shown with modern fit pants with a beaded stripe

**Fabric Content:**

100% Worsted Wool

**To order ensemble as shown:**

Coat	<b>820</b>
Modern Fit Pants	<b>850</b>
Shirt	<b>85W</b>
Tie	<b>BSAT</b>
Sash	<b>CUMB</b>
Jewelry	<b>BLACK</b>
Formal Shoes (upcharge)	<b>BDS</b>
Pocket Square (purchase only)	<b>PWWH</b>

**Black Pant Option:**

Modern Fit Pants **850**

PLATINUM COLLECTION

GOLD COLLECTION

**White Classic Shawl Tuxedo**  
Style 701



**MODERN FIT**  
Fashion-forward styling with a flattering appearance.

**Size Scale:** B2 - see page 57

**Men's coat sizes:** 34-66

**Boys' coat sizes:** 3-18

**850 pant sizes:** 18-71

**Features:**

- ▶ Self shawl lapel, flap pockets, non-vented, 30" length
- ▶ Shown with black modern fit pants with a beaded stripe

**Fabric Content:**

100% Polyester

**To order ensemble as shown:**

Coat	<b>701</b>
Modern Fit Pants	<b>850</b>
Shirt	<b>85W</b>
Tie	<b>BSAT</b>
Sash	<b>CUMB</b>
Jewelry	<b>BLACK</b>
Formal Shoes (upcharge)	<b>BDS</b>
Pocket Square (purchase only)	<b>PWBL</b>

**White Pant Option:**

Modern Fit Pants **750**

**Black Pant Option:**

Modern Fit Pants **850**



To BUY see page 17 in the JFW For Purchase Catalog



**Classic Peak Fulldress Tuxedo**  
Style 588



**TRADITIONAL FIT**  
A classic, fuller cut tuxedo.

**Size Scale:** D - see page 57

**Men's coat sizes:** 34-60

**Boys' coat sizes:** 3-18

**850 pant sizes:** 18-71

**Features:**

- ▶ Six-button fulldress styling
- ▶ Satin peak lapel, center-vented tail, 42" length
- ▶ Shown with modern fit pants with a beaded stripe

**Fabric Content:**

100% Tropical Worsted Wool

**To order ensemble as shown:**

Coat	<b>588</b>
Modern Fit Pants	<b>850</b>
Shirt	<b>36W</b>
Tie	<b>BPIQ</b>
Vest	<b>VPIQ</b>
Jewelry	<b>WHITE</b>
Formal Shoes (upcharge)	<b>BDS</b>
Pocket Square (purchase only)	<b>PWWH</b>

**Black Pant Option:**

Modern Fit Pants **850**



**Classic Peak Tuxedo**  
Style 880

**T** **TRADITIONAL FIT**  
A classic, fuller cut tuxedo.

**Size Scale:** A - see page 57;  
expanded sizes available

**Men's coat sizes: 34-74**

**Boys' coat sizes: 2-18**

**850 pant sizes: 18-71**

**Features:**

- ▶ Satin peak lapel, center-vented, 31<sup>1</sup>/<sub>2</sub>" length
- ▶ Shown with modern fit pants with a beaded stripe

**Fabric Content:**

100% Worsted Wool

**To order ensemble as shown:**

Coat	<b>880</b>
Modern Fit Pants	<b>850</b>
Shirt	<b>85W</b>
Tie	<b>BSAT</b>
Sash	<b>CUMB</b>
Jewelry	<b>BLACK</b>
Formal Shoes (upcharge)	<b>BDS</b>
Pocket Square (purchase only)	<b>PWWH</b>

**Black Pant Option:**

Modern Fit Pants	<b>850</b>
------------------	------------



# MEASURING TECHNIQUES

## NO LOOSE MEASUREMENTS OR FINGERS UNDER THE MEASURING TAPE

Always record the customer's height & weight, as well as his fit preference (regular or tighter fit)



**CHEST**

- Lift arms
- Place tape around broadest part of chest
- Lower arms to side and relax
- Measure from side to ensure tape is level



**OVERARM**

- Arms relaxed by side
- Place tape around broadest part of chest and arms
- Measure from side to ensure tape is level



**NECK**

- Measure around neck where collar will button
- Do not place fingers under the tape
- Add 1" to measurement for neck size



**HIP**

- Remove items from pockets
- Stand to side and measure broadest part of hip and rear



**PANT WAIST**

- Measure where pants will be worn (1" under the navel is ideal)



**PANT WAIST - WITH STOMACH**

- Measure below the stomach if that's where the pants will be worn
- Pull tape snug for this measurement



**STOMACH**

- Measure widest part of customer's stomach
- Helps determine shirt and coat size on larger customers
- DO NOT record as the waist measurement

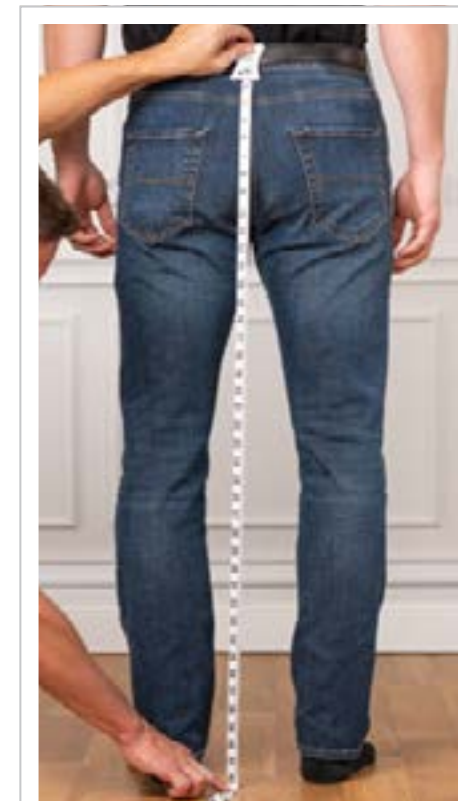
**SIZING TIPS**

**PANT SIZING**

- **Hip measurement - 6** = smallest pant waist (Ex. 40" hip - 6" = 34" waist)

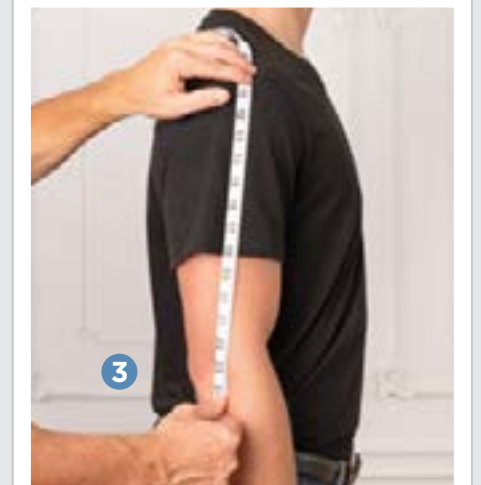
**COAT SIZING**

- **Slim Fit Coats**
  - Chest measurement + 1" - or - Overarm measurement - 8"
  - The LARGER number is the coat size
- **Modern Fit Coats**
  - Chest measurement - or - Overarm measurement - 9"
  - The LARGER number is the coat size



**OUTSEAM**

- Remove shoes and look straight ahead
- Measure from the back
- Start at top of waistband and measure to the floor
- Subtract 1" for a standard pant break



**SHIRT SLEEVE**

- 1 Measure from base of neck centered on spine
- 2 Measure over the top of shoulder
- 3 Measure to elbow
- 4 Measure to wrist bone and add 1"



FOR RENTAL