

## Learning Guide

# Generate 3D Models with Meshy

## Introduction

Many artificial intelligence (AI) tools are available online that can generate 3D models using different methods. Generative AI works by learning patterns from a large amount of data, and using those patterns to create new or similar content. In 3D creation, this means that AI tools allow you to generate 3D models quickly and easily, with simple inputs like text or 2D images. You can then use other software to modify the generated models to better align with your creative vision, or use the AI-generated models as part of a larger 3D experience. Every AI tool might work differently and have different levels of access. We strongly recommend exploring different tools to find one that meets your needs, and being transparent about how AI is used in your work.

In this Guide, you will learn to use Meshy to create 3D models from text prompts or images.

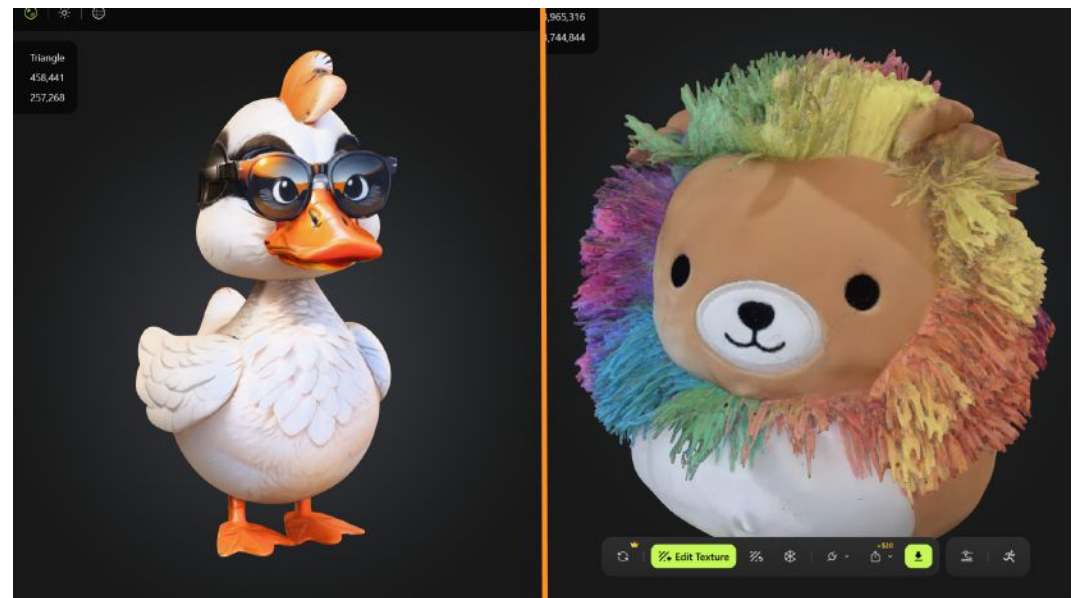
**Video Learning Guide for this Lesson:**  
<https://www.youtube.com/watch?v=RnOX5adwZ7k>

## Contents

[Step 1: Generate a 3D model with text prompts](#)

[Step 2: Generate a 3D model with an image](#)

[Lesson Closure](#)



## Step 1: Generate a 3D model with text prompts

### Preview

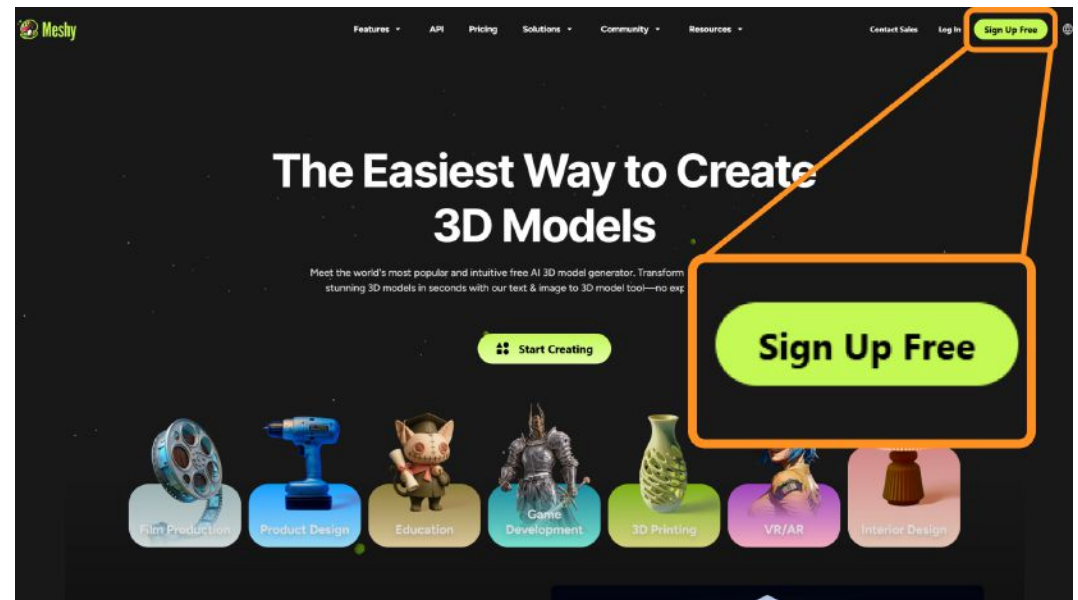
In this section, we will use the text-to-3D option within Meshy to generate a 3D model from a text prompt.

### Experiment

#### MAKE A MESHY ACCOUNT

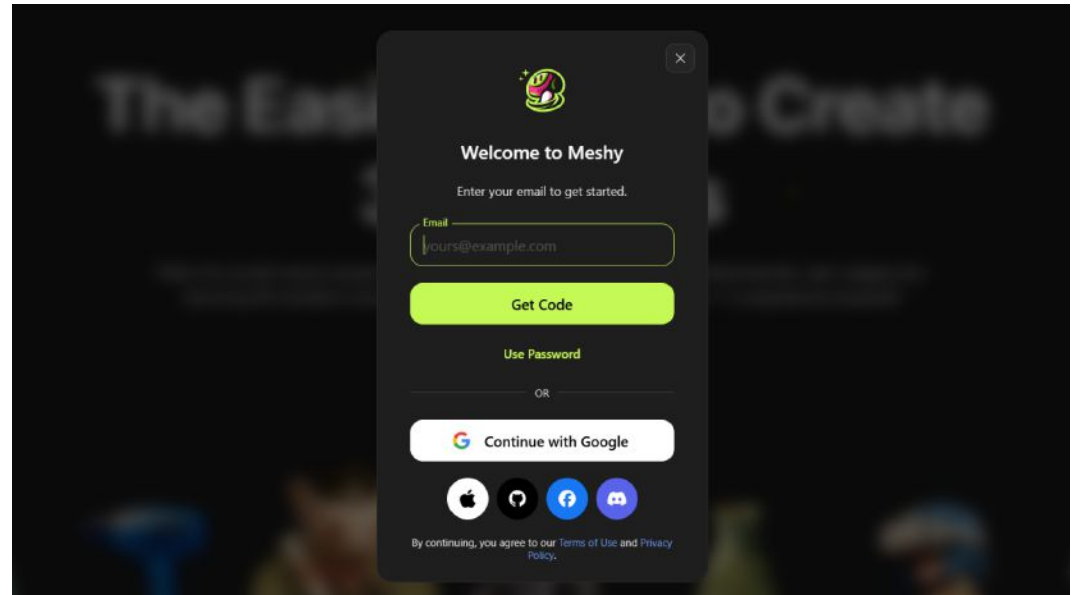
Search for Meshy.ai (<http://Meshy.ai>) in your browser. If this is the first time you're using this tool, you will need to make a free account.

Click the **Sign Up Free** button on the top-right corner of the screen, or **Log In** if you already have an account.



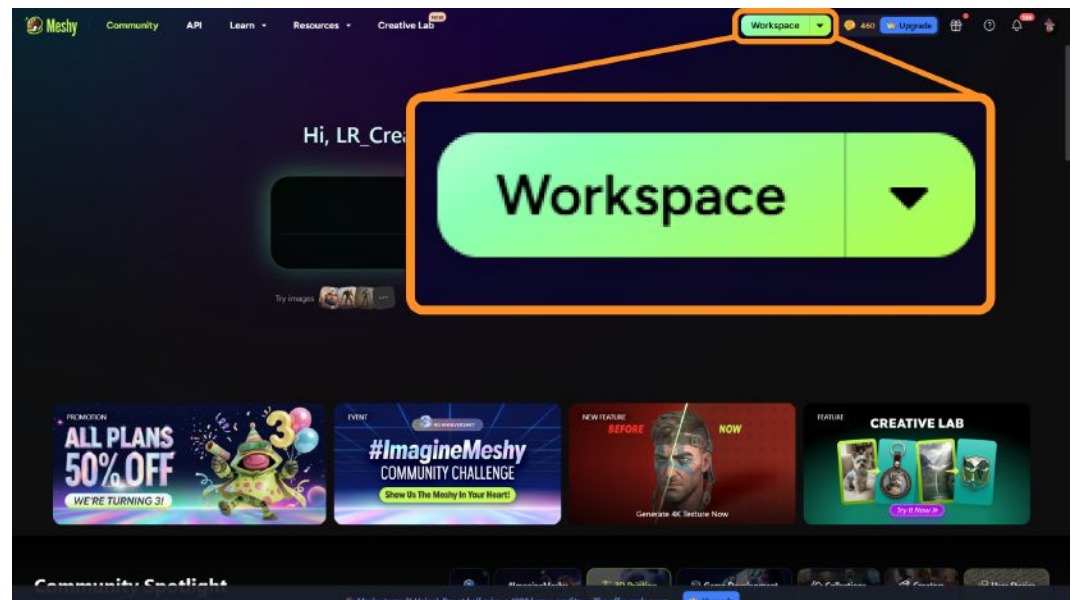
Log in using your email address or a Google account.

Once you make an account, you will be asked for some basic information, such as what type of creator you are and why you're using Meshy. The answers you provide will not change your access to the tools.

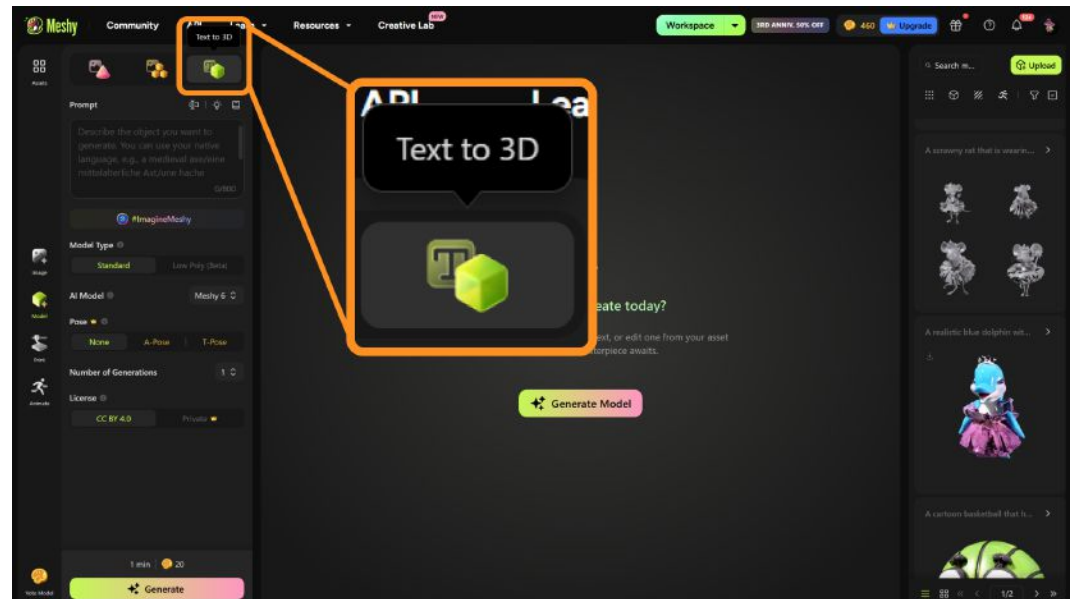


## GENERATE A MODEL USING TEXT

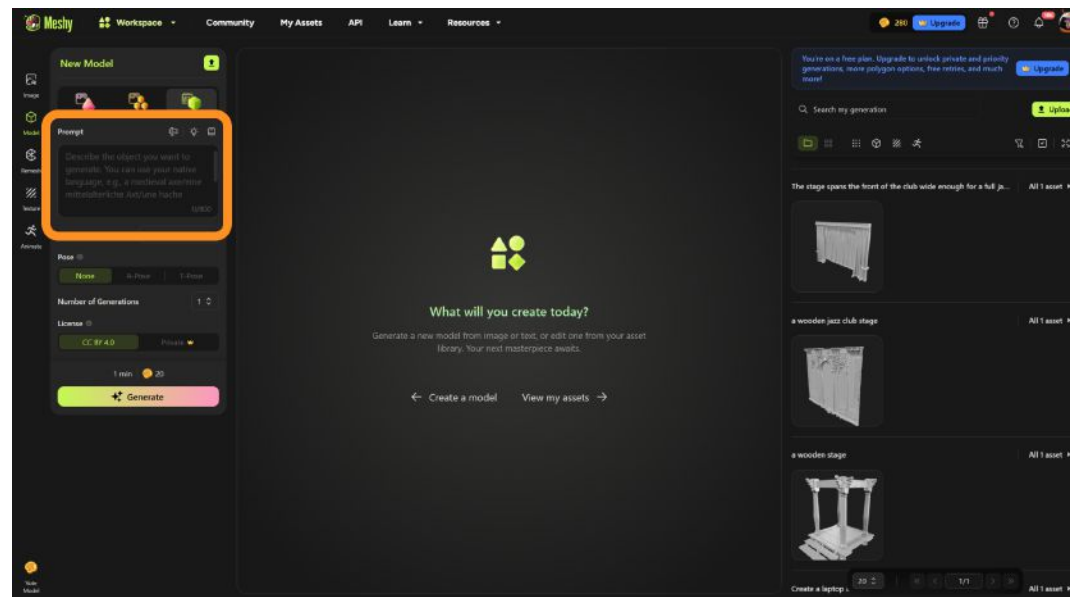
Once you are all set up, you will be brought to the homepage. From here, click the **Workspace** button.



This will bring you to the **Workspace**. From the left panel, select the **Text to 3D** button.



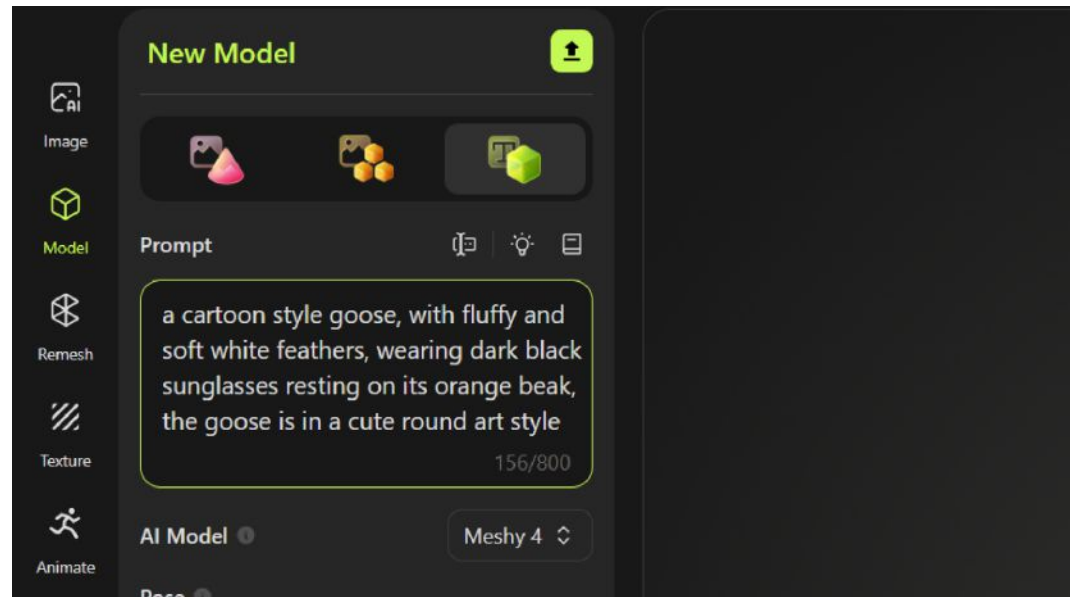
Locate the “Prompt” box on the left side where you can type in your **text prompt**.



Type out exactly what kind of 3D model you would like into the **Prompt** text box. The more detailed your description is, the better the outcome will be.

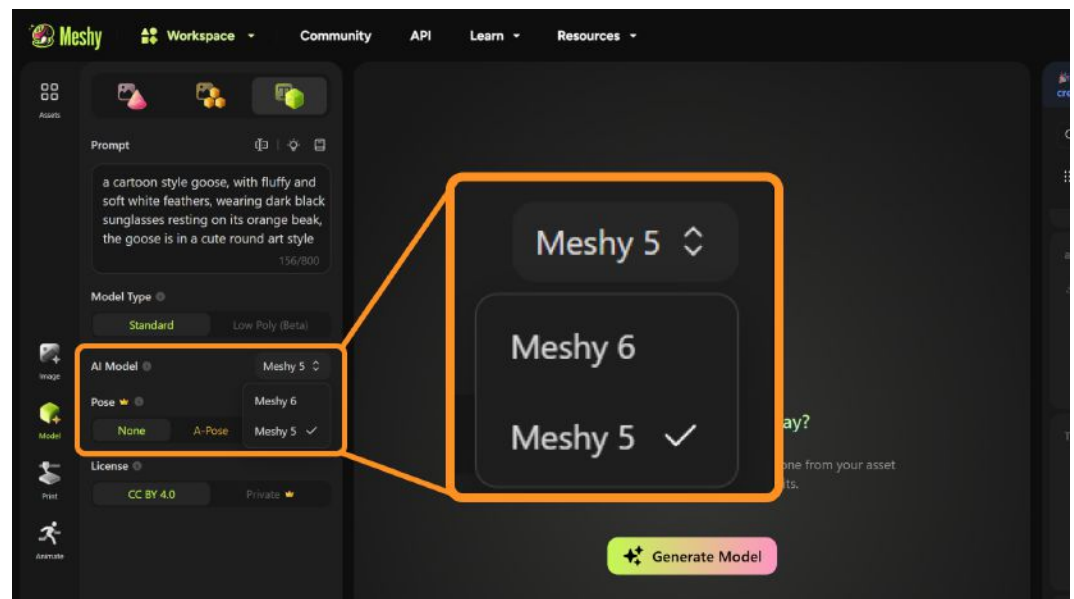
Make sure to also include details about the texture of your model. Use words that describe the physical texture, like “fluffy” or “smooth”, as well as colors like “brown” or “purple”.

For example: “A cartoon style goose, with fluffy and soft white feathers, wearing dark black sunglasses resting on its orange beak, the goose is in a cute round art style.”



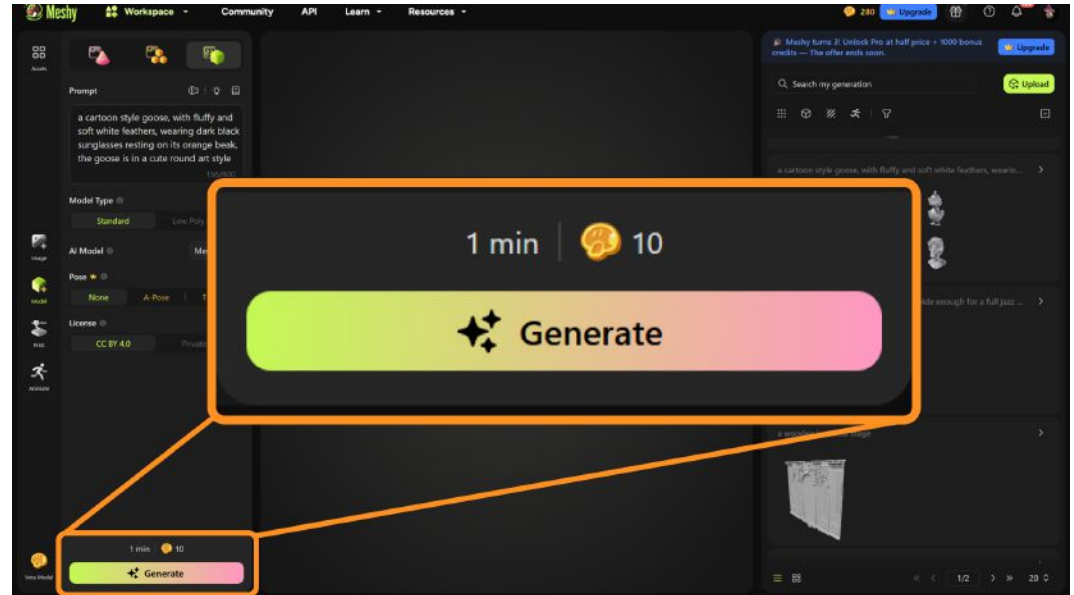
Next, make sure you choose **Meshy 5** for the “AI Model”. You can try using other versions as well; however, you may not be able to download the models due to a paywall.

Keep in mind that this option may change in the future as Meshy updates its offerings and policies.



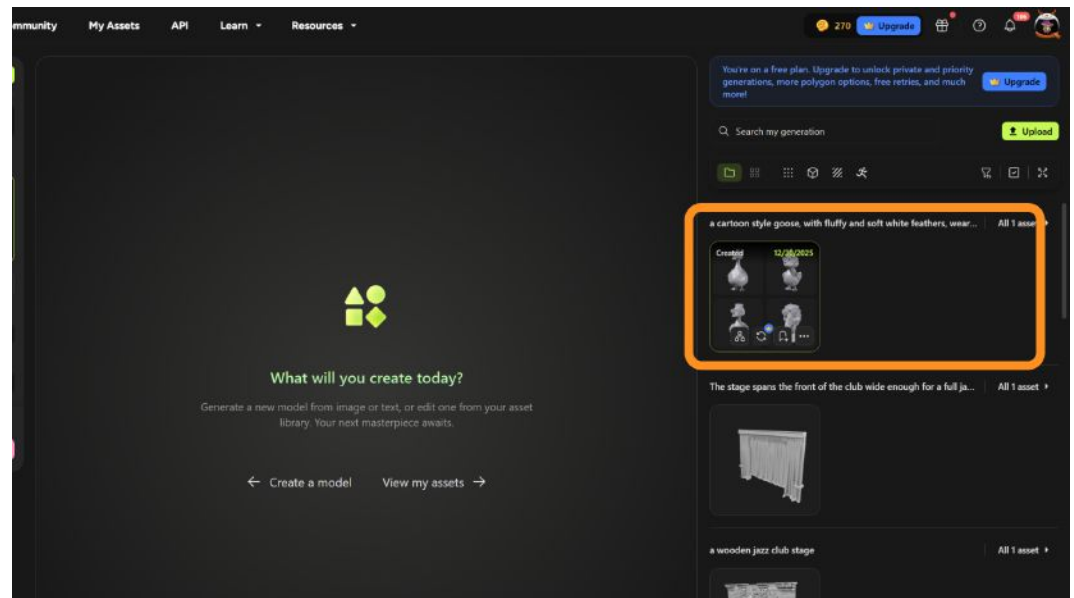
You can leave the rest of the settings as-is and click the **Generate** button at the bottom of the panel. Meshy will begin generating your model. This process might take a few minutes.

Note that generating a model will use some of your “credits” in Meshy. You get 100 credits each month on a free account. You can see the number of credits you have on the top-right corner of the screen.



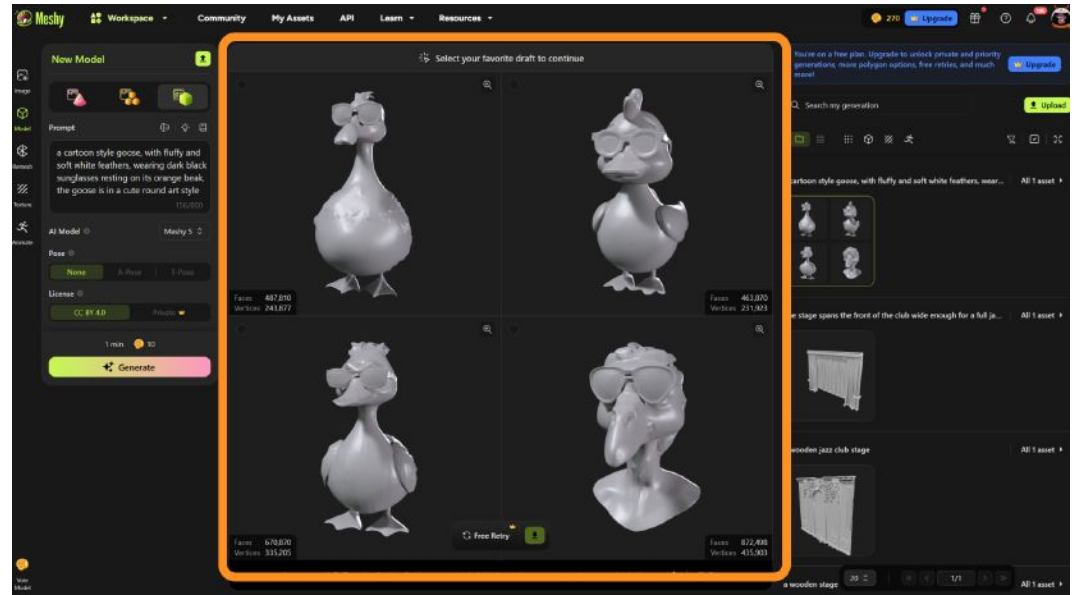
Once completed, Meshy will provide you with 4 generated model options to choose from. These will be on the right panel of the page, along with any previous models you might have generated using your account.

**Click** on your collection of 4 models to get a closer look.



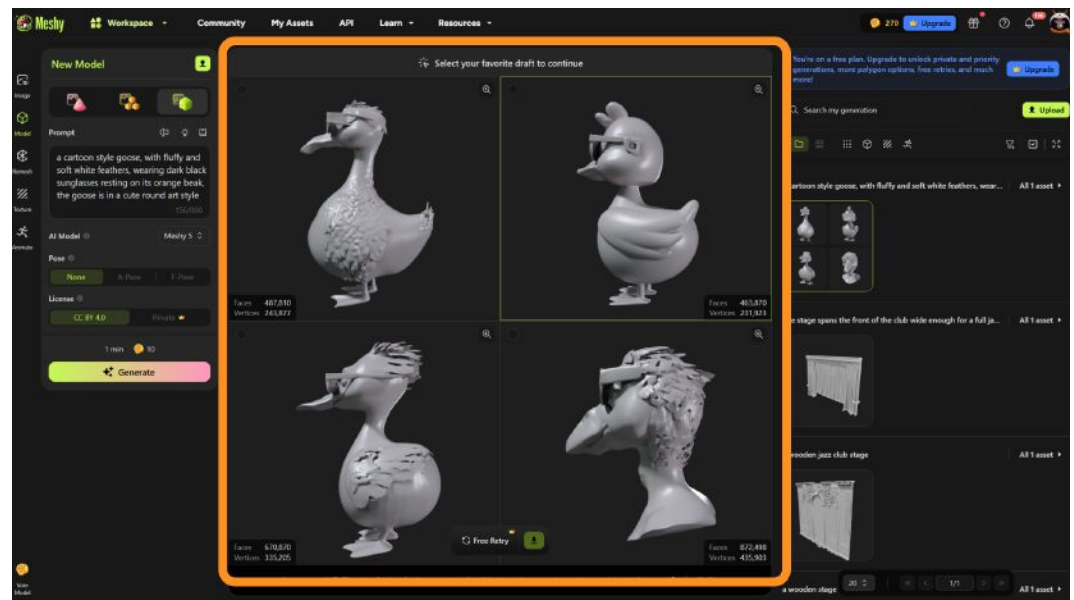
If the models do not come out the way you like, you can edit your text prompt to make it more descriptive and try again. Keep in mind that this will use your credits in Meshy.

Once you're happy with a generated model, click on the one you want to proceed with.



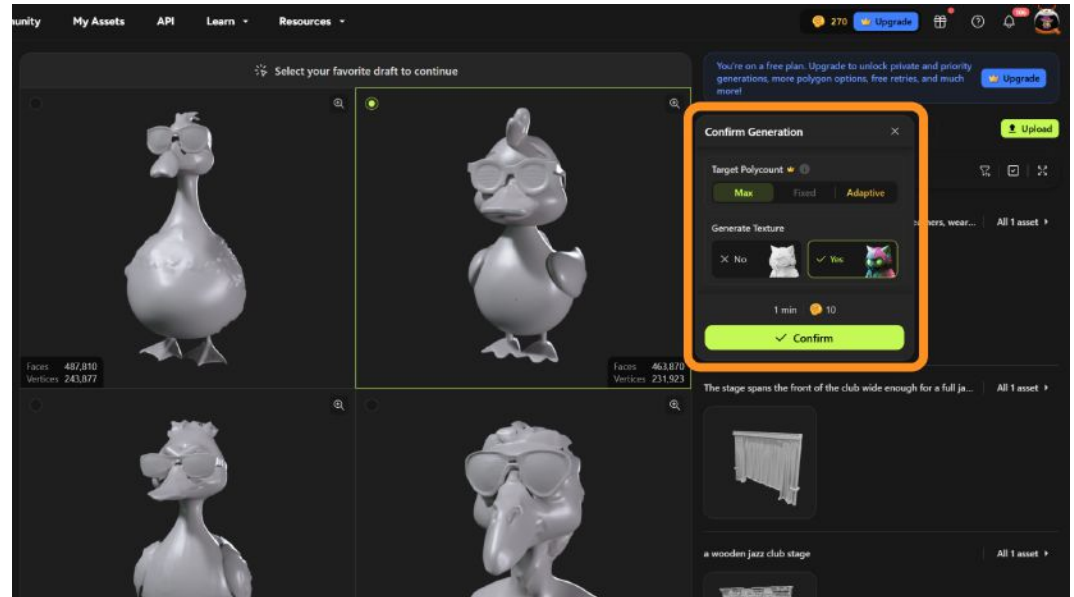
## GENERATE A TEXTURE

All the generated 3D models will be gray because they do not have textures yet. Textures are image files that define the visual properties of a 3D model, like color, patterns, bumpiness, etc. Meshy can generate textures for your model based on your prompt.

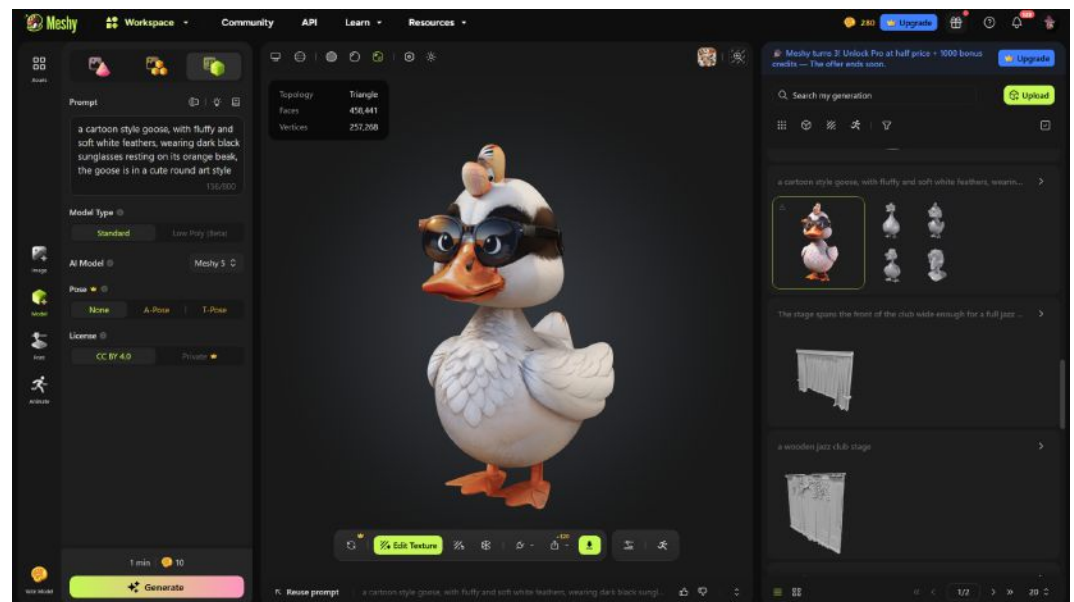


When you click on the model you'd like to proceed with, a pop-up will appear on the screen. Make sure the **Yes** option is selected under "Generate Texture" and click the **Confirm** button. The textures will start generating on the right side panel.

Remember that this process will also use some of the credits in your Meshy account, so it is best to only texture the models you are satisfied with.

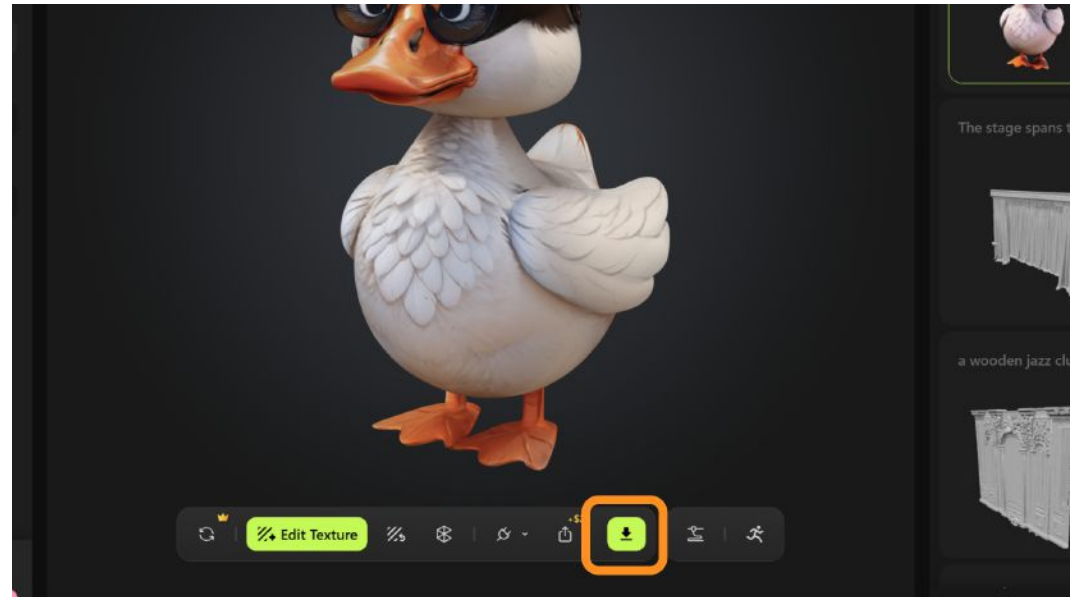


Once the texture generation is complete, you'll see the new model on the right panel again. Click on the textured model to see it in the workspace and check the results.

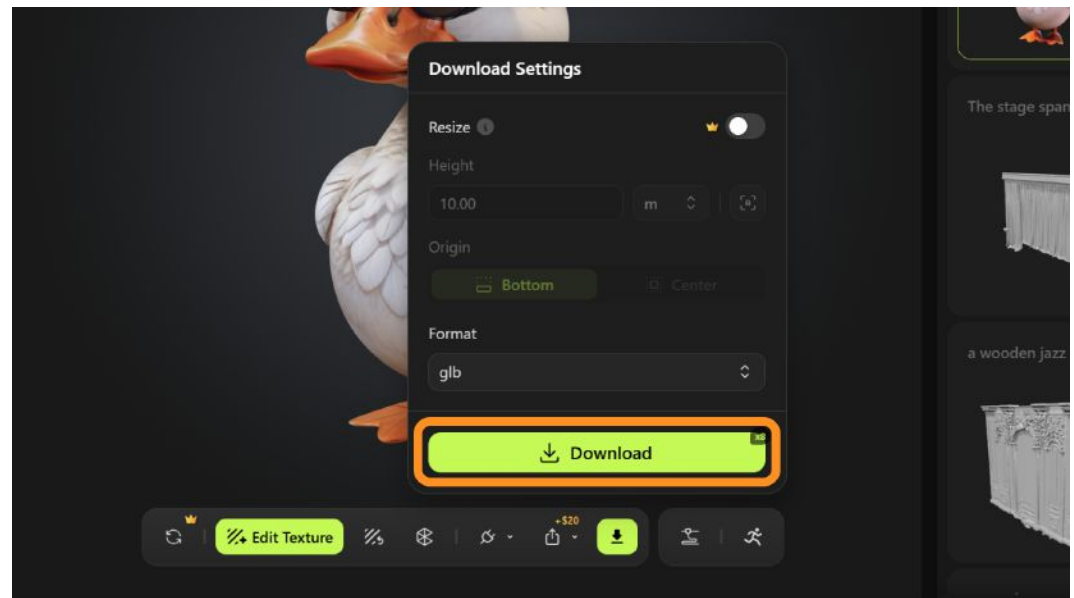


## DOWNLOAD THE MODEL

If you are happy with your model and its textures, click the **Download** button at the bottom right. Otherwise, you can try making changes to your text prompt and generating again until you're happy with the results.

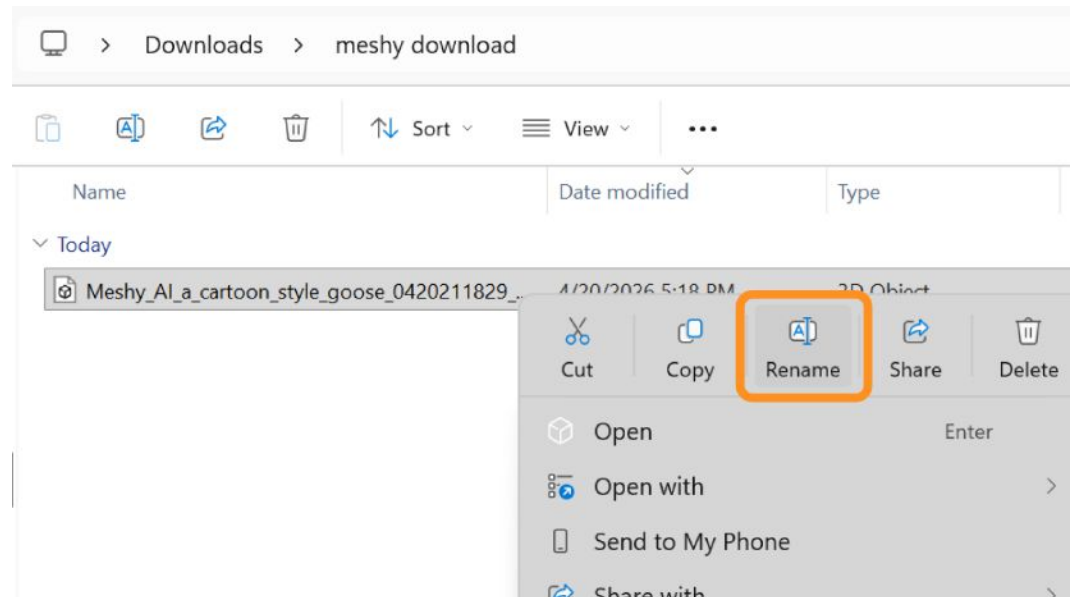


You will see a small pop-up for the download. Select the **“glb”** format option and click the green **Download** button. With this file format, you will be able to export and save your model's shape and textures together, and then import the complete model into a different 3D software later.



The file will download to your device and will be named automatically.

Locate the file in your **Downloads folder** and change the file name to something you will easily recognize.



## Self Check

Were you able to generate the model you wanted? Try using multiple text prompts and see which types of prompts generate accurately and which ones don't. Giving descriptions about position and color will help the model be closer to what you expect.

## Step 2: Generate a 3D model with an image

### Preview

If you would like to create a 3D model based on a single image, instead of a text prompt, you can use the Image-to-3D functionality in Meshy. This step will show you how to generate a 3D model using a single picture of an object in real life.

### Experiment

#### TAKE A PHOTO OF YOUR OBJECT

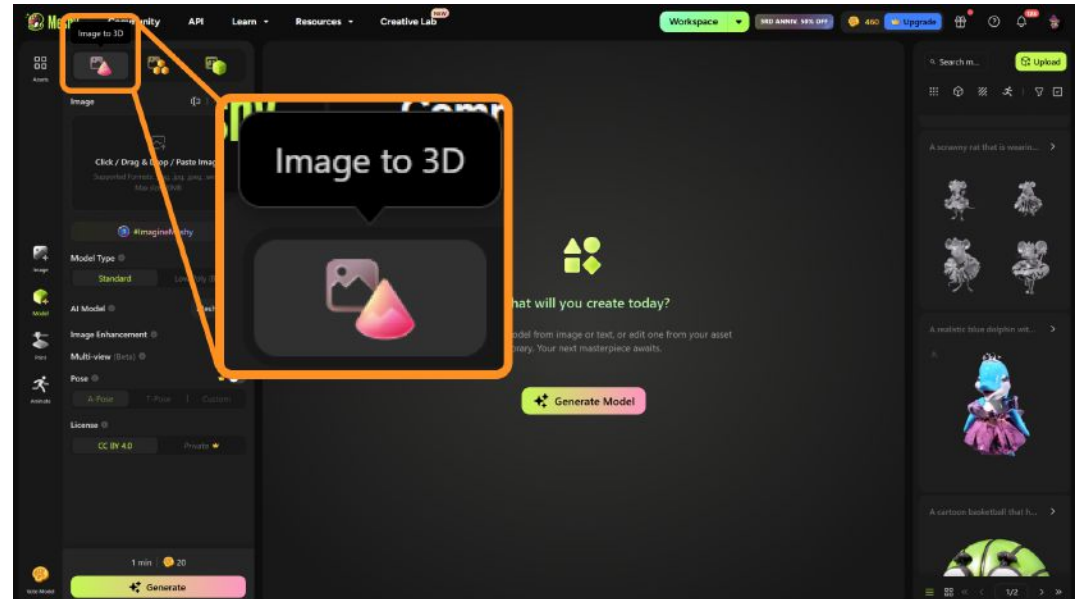
Using a device with a camera, capture a photo of an object. It is good practice to have good lighting that does not cast too much shadow on your object, and a plain background without a lot of distractions. Objects with lots of reflections, like glass or metal, may not generate well.

From here, you can either upload the image to your computer with software such as Google Drive, or email it to yourself. If preferred, you can access Meshy from your mobile device.



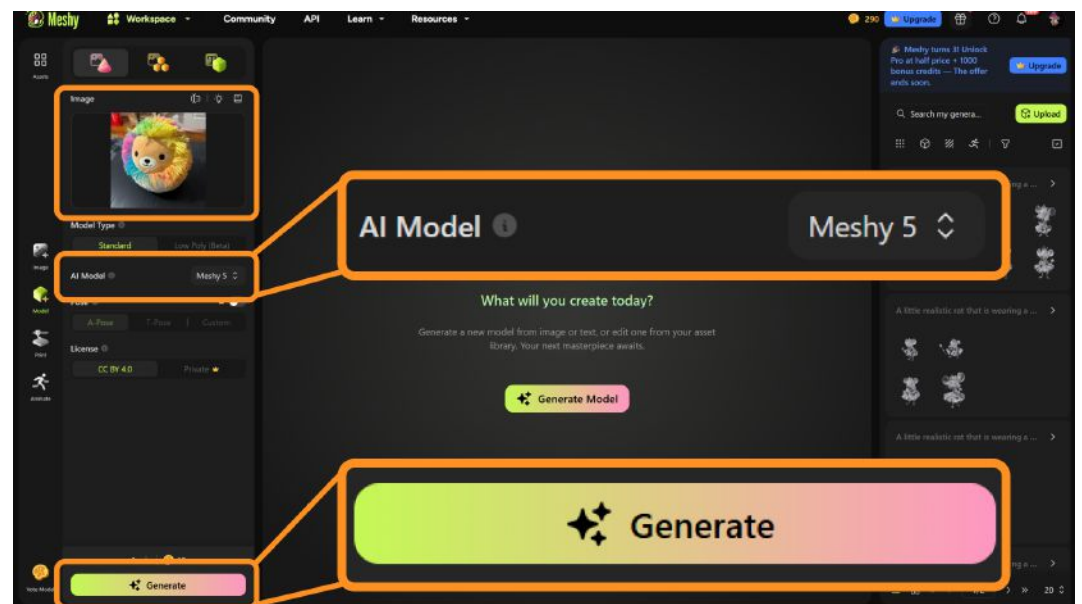
## GENERATE A 3D MODEL

Open Meshy and log in if needed. Head to the Workspace, and select the **Image to 3D** option.



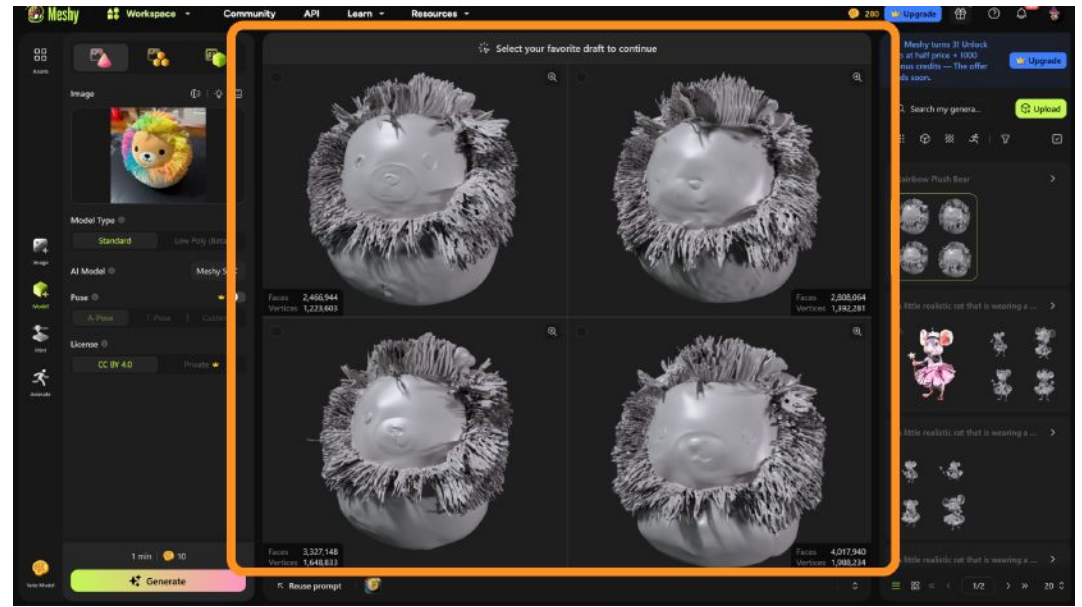
Upload the image to the "Image" box.

Make sure to select **Meshy 5** and click the **Generate** button at the bottom of the panel. Give Meshy a few minutes to process.



## GENERATE A TEXTURE

Just like with Text-to-3D, Meshy will give you 4 generated models to choose from. Click on the newest collection of models from the right side panel to view them.



Choose the model you like the most and click the green **Confirm** button to start generating the texture. This process might take a few minutes.

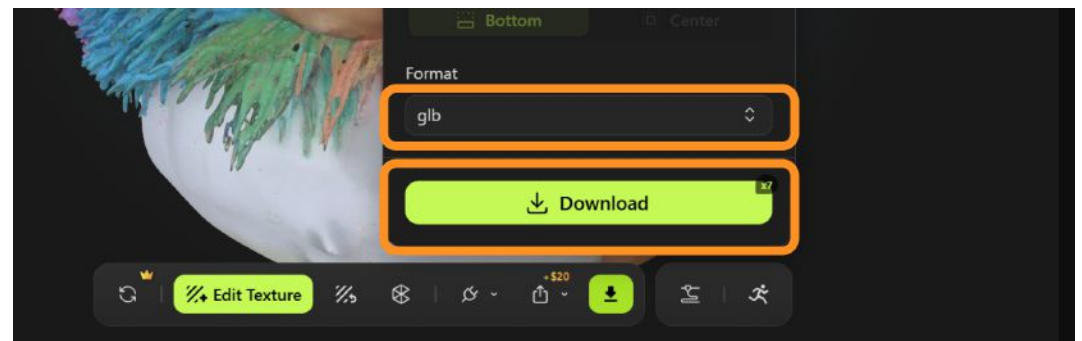


Once generated, select your textured model from the right panel to view it.

If you're happy with the final model and its textures, click **Download**.



Choose the “**GLB**” file format before downloading the model to your computer.



## Self Check

Were you able to use a picture to generate a 3D model with textures? What did you find different in the process of generating a 3D model with an image, compared to a text prompt?

## Lesson Closure

### Demonstration of Learning

You've learned how to generate 3D models using the help of an online AI tool, Meshy. You learned how to type descriptive text prompts to generate a 3D model, as well as use a picture of a real life object to aid in model generation. You also used AI to texture the generated models with color and other details, and exported the models to be used in other software.

### Exploration Opportunities

When using Image-to-3D tools, you can use more than just the pictures you've taken as the source to generate 3D models. With AI tools like ChatGPT or Google Gemini, you can generate 2D images or edit existing ones until you get a result you like. Once you're happy with a generated image, try using it in Meshy to turn your image into a 3D model!

You can now use the 3D model you've generated and exported from Meshy in many different types of 3D projects. If you're interested in learning how to create your own webpage with animated 3D features using the model you've generated, check out the following lessons:

[Edit and Animate 3D Models with Spline](#)

[Create a Website with 3D Animations in Google Sites](#)

If you're interested in creating 3D models with other methods, such as mesh modeling or sculpting, check out the following lessons:

[Create 3D Models with Tinkercad](#)

[Create 3D Models with SculptGL](#)